

PARC NATIONAL DE L'UPEMBA
I. MISSION G. F. DE WITTE
en collaboration avec
W. ADAM, A. JANSSENS, L. VAN MEEL
et R. VERHEYEN (1946-1949).
Fascicule 49 (4)

NATIDNAAL UPEMBA PARK
I. ZENDING G. F. DE WITTE
met medewerking van
W. ADAM, A. JANSSENS, L. VAN MEEL
en R. VERHEYEN (1946-1949).
Aflevering 49 (4)

PYGOSTENINAE
(COLEOPTERA POLYPHAGA)
Fam. STAPHYLINIDAE

BY

DAVID H. KISTNER (University of Chicago)

This paper is based on a collection of *Pygosteninae* made in the Upeмба National Park by the G. F. DE WITTE Mission, 1946-1949, to which have been added some specimens from the « Musée Royal du Congo Belge », Tervuren, and the « Institut royal des Sciences naturelles de Belgique », Brussels. In the following pages, all new species from within the park boundaries will be described and illustrated. In addition, some species not found within the park, but whose morphological affinities approximate species therein will also be described, the names of which will be enclosed in brackets. Species collected within the park but known primarily from other localities will be merely cited.

Descriptions of genera and higher categories in addition to keys for the identification of all species will be given in a monograph which is in preparation at this time. The genus *Typhloponemys* REY is used as defined previously in my Albert National Park paper.

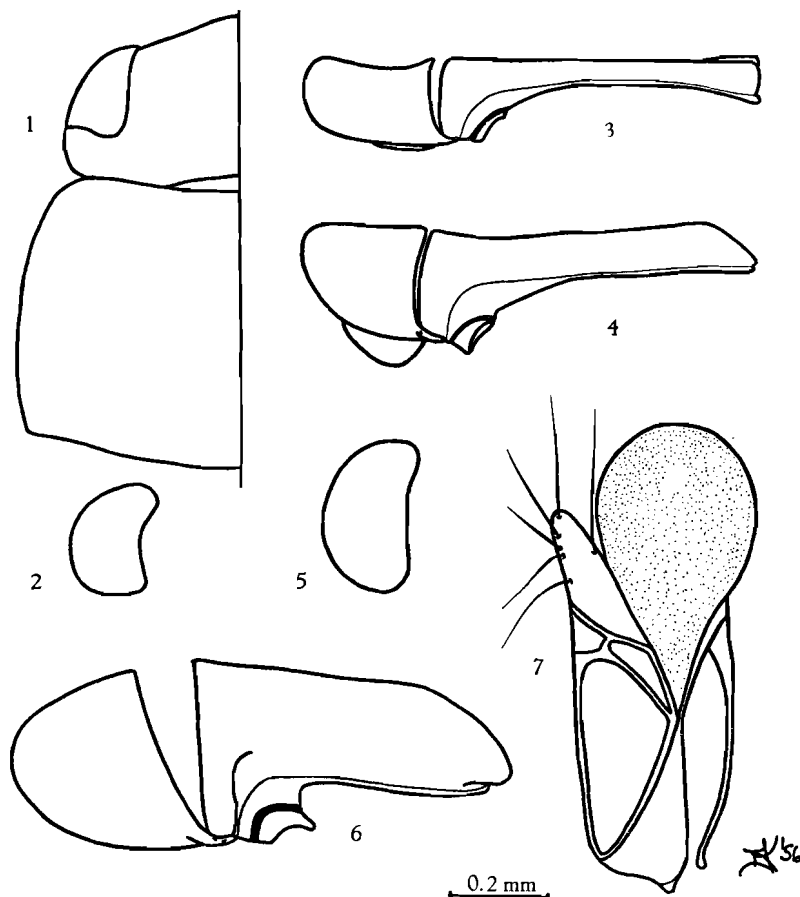
The author wishes to express his gratitude to Dr. ALFRED E. EMERSON, University of Chicago, and Dr. CHARLES H. SEEVERS, Roosevelt University for helpful suggestions incorporated into this paper. Thanks are also given to Mr. P. BASILEWSKY, Musée Royal du Congo Belge, Tervuren (M.R.C.B.); Mr. A. COLLART, Institut royal des Sciences naturelles de Belgique, Brussels (I.R.S.N.B.); and Mr. G. FAGEL, Institut des Parcs Nationaux du Congo Belge (I.P.N.C.B.), for the loan of specimens included in this study. The letters in parentheses will be used hereinafter to indicate the institution where specimens cited are deposited. Specimens retained in the collection of the author will be indicated (D.K.). Partial financial aid has been given by the Dr. WALLACE C. and CLARA A. ABBOTT Memorial Fund of the University of Chicago.

1. — [***Typhloponemys gabonensis*** FAUVEL].

(Figs. 1, 2, 3, 7.)

Pygostenus gabonensis FAUVEL, Rev. d'Ent., 18, 1899, p. 19.

Head and pronotum shaped as in figure 1. Eye, viewed from the side, shaped as in figure 2. Color reddish brown throughout, head and antennae much darker than the rest of the body. Dorsal surface of the head, pronotum, and elytra smooth and shiny, very finely and evenly punctate.



FIGS. 1-7.

1: Head and pronotum, *Typhloponemys gabonensis* FAUVEL; 2: Eye, lateral, *T. gabonensis* FAUVEL; 3: Median lobe of the male genitalia, *T. gabonensis* FAUVEL; 4: Median lobe of the male genitalia, *T. hirsutopudenda* n. sp.; 5: Eye, lateral, *T. afer* n. sp.; 6: Median lobe of the male genitalia, *T. zodium* n. sp.; 7: Lateral lobe of the male genitalia, *T. gabonensis* FAUVEL.

Macrochaetotaxy of abdominal tergites II-VIII : 0, 0, 0, 0, 4, 4, 0. Macrochaetotaxy of abdominal segment IX as follows : dorso-lateral plates, 7, most anterior chaeta smaller, thinner, and lighter in color than the more posterior ones; median dorso-lateral part, 5; ventro-lateral part, 4; median lobe, 7. Lateral lobe of the male genitalia with 6-7 long black chaetae on the apical portion, shaped as in figure 7 (shaded area membranous). Median lobe of the male genitalia with a narrow median ventral anterior carina, shaped as in figure 3. Female unknown.

Measurements. — Pronotum length, 0,60 mm; elytra length, 0,52 mm; eye length, 0,24 mm; gula width, 0,15 mm; interocular distance, 0,46 mm; head length, 0,34 mm. Number measured, 1.

This species can be distinguished from all other species by the shape of the median lobe of the male genitalia.

Material examined. — 1 ♀ : No. 1146 : Holotype, *P. gabonensis* FAUVEL, det. A. FAUVEL, French Equatorial Africa : Gabon : Lambaréné (I.R.S.N.B.).

2. — *Typhloponemys hirsutopudenda* n. sp.

(Figs. 4, 10.)

Head shape, pronotum shape, eye shape, shape and chaetotaxy of the lateral lobe of the male genitalia as in *T. gabonensis* FAUVEL (figs. 1, 2 and 7). Color reddish brown throughout, head and antennae much darker than the rest of the body. Dorsal surface of the head, pronotum, and elytra smooth and shiny; finely and evenly punctate. Macrochaetotaxy of abdominal tergites II-VIII : 0, 0, 0, 0, 4, 4, 0. Macrochaetotaxy of abdominal segment IX as follows : dorso-lateral plates, 6, most anterior chaeta smaller, thinner, and lighter in color than the more posterior ones; median dorso-lateral part, 6; ventro-lateral part, 4; median lobe, 7. Spermatheca shaped as in figure 10. Median lobe of the male genitalia with a wide median ventral anterior carina, shaped as in figure 4.

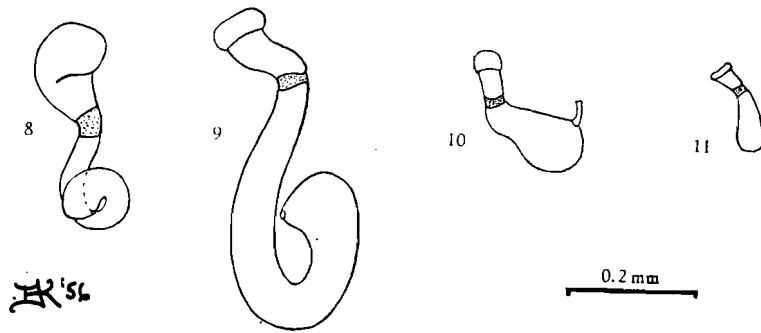
Measurements. — Pronotum length, 0,64-0,80 mm; elytra length, 0,60-0,64 mm; eye length, 0,26-0,33 mm; gula width, 0,13-0,15 mm; interocular distance, 0,52-0,54 mm; head length, 0,34-0,40 mm. Number measured, 6.

This species is distinguished from all other species by the shape of the spermatheca and the median lobe of the male genitalia.

Holotype ♂ : No. 1622 : Lusinga, 1.760 m, 28.III.1947. In the collection of the Institut des Parcs Nationaux du Congo Belge, Brussels.

Allotype ♀ : No. 2266 : [Kivu : Bitale, Bukaru, near Kalehe, 19.III.1950, G. MARLIER]. In the collection of the Musée Royal du Congo Belge, Tervuren.

Paratypes : [1 ♂ : Kivu : Mutakato, near Masisi, 800 m, IX.1953, N. LELEUP, at light (M.R.C.B.)]; [1 ♀ : Kivu : Contr. S.E. du Kahuzi, near Kabare, 13.VIII.1951, N. LELEUP, collected from leaf mold in *Hagenia* forest (D.K.)]; [1 ♂ : Equator : Bokatola, 20.II.1932, R.P. HULSTAERT (M.R.C.B.)]; [1 ♂ : Equator : Flandria, 1931, R.P. HULSTAERT (M.R.C.B.)].



FIGS. 8-11. — Spermathecae.

8 : *Typhloponemys zodium* n. sp.; 9 : *T. afer* n. sp.; 10 : *T. hirsutopudenda* n. sp.;
11 : *T. raignieri* n. sp.

3. - - [***Typhloponemys raignieri*** n. sp.]

(Fig. 11.)

Head shape, pronotum shape, and eye shape as in *T. gabonensis* FAUVEL (fig. 1 and 2). Color reddish brown throughout, head and antennae much darker than the rest of the body. Dorsal surface of the head, pronotum, and elytra smooth and shiny; very finely and evenly punctate. Macrochaetotaxy of abdominal tergites II-VIII : 0, 0, 0, 0, 4, 4, 0. Macrochaetotaxy of abdominal segment IX as follows : dorso-lateral plates, 6, most anterior chaeta smaller, thinner, and lighter in color than the more posterior ones; median dorso-lateral part, 5; ventro-lateral part, 4; median lobe, 7. Spermatheca shaped as in figure 11. Male unknown.

Measurements. — Pronotum length, 0,45-0,50 mm; elytra length, 0,36-0,44 mm; eye length, 0,20-0,21 mm; gula width, 0,11-0,12 mm; interocular distance, 0,36-0,40 mm; head length, 0,20-0,28 mm. Number measured, 3.

This species can be distinguished from all other species by the shape of the spermatheca.

Holotype ♀ : [No. 1783 : Belgian Congo : Kivu : Mutakato, near Masisi, 800 m, 1.IX.1953, N. LELEUP, at light]. In the collection of the Musée Royal du Congo Belge, Tervuren.

Paratypes : 2 ♀ ♀ : same data as the holotype (M.R.C.B., D.K.).

Remarks. — This species is named for R.P. A. RAIGNIER, Louvain, who has contributed much to the knowledge of the behaviour of the old world doryline ants with which the pygostenines are closely associated.

This species and the two preceding fall into a single species group (*hirsutopudenda* group) which can be distinguished from all other species groups of *Typhloponemys* by the following characters in combination : shape and sculpture of the head and pronotum, the eye shape, the abdominal macrochaetotaxy, and the peculiar lateral lobe of the male genitalia.

4. — **Typhloponemys lujae** Wasmann.

Pygostenus lujae Wasmann, Zool. Jahrb., Suppl., 7, 1904, p. 648.

Material examined. — 1 ♀ : Lusinga, 1.760 m, 28.III.1947 (I.P.N.C.B.).

5. — **Typhloponemys afer** n. sp.

(Figs. 5, 9.)

Color blackish brown throughout; head darker, approaching black. Dorsal surface of the head, pronotum, and elytra smooth and shiny; finely and evenly punctate. Eye, viewed from the side, shaped as in figure 5. Macrochaetotaxy of abdominal tergites II-VIII : 2, 4, 4, 4, 4, 4, 0. Macrochaetotaxy of abdominal segment IX as follows : dorso-lateral plates, 8, most anterior chaeta smaller, thinner, and lighter in color than the more posterior ones; median dorso-lateral part, 6; ventro-lateral part, 4; median lobe, 7. Spermatheca shaped as in figure 9. Male unknown.

Measurements. — Pronotum length, 1,02 mm; elytra length, 0,96 mm; eye length, 0,32 mm; gula width, 0,24 mm; interocular distance, 0,76 mm; head length, 0,44 mm. Number measured, 1.

Distinguished from all other species, including *T. lujae* (Wasmann) to which it is most closely related, by the shape of the spermatheca.

Holotype ♀ : No. 1644 : Lusinga, 1.760 m, 22.IV.1949. In the collection of the Institut des Parcs Nationaux du Congo Belge, Brussels.

6. — **Typhloponemys schoutedeni** Bernhauer.

Pygostenus schoutedeni Bernhauer, Rev. Zool. Afr., 15, 1927, p. 236.

Material examined. — 1 ♂, 1 ♀ : Lusinga, 1.760 m, 7.V.1949 (I.P.N.C.B.).

7. — **Typhloponemys zodium** n. sp.

(Figs. 6, 8.)

Dorsal surface of the head, pronotum, and elytra very dark reddish brown; head approaching black. Abdomen and venter reddish brown,

appendages with a golden sheen caused by the abundant yellow setae thereon. Dorsal surface of the head, pronotum, and elytra smooth and glistening, with extremely fine punctures scattered evenly over them. Macrochaetotaxy of abdominal tergites II-VIII : 2, 4, 4, 4, 4, 4, 0. Macrochaetotaxy of abdominal segment IX as follows : dorso-lateral plates, 7, most anterior chaeta smaller, thinner, and lighter in color than the more posterior ones; median dorso-lateral part, 7; ventro-lateral part, 4; median lobe, 7. Spermatheca shaped as in figure 8. Median lobe of the male genitalia shaped as in figure 6.

Measurements. — Pronotum length, 0,84-0,90 mm; elytra length, 0,62-0,68 mm; eye length, 0,27-0,28 mm; gula width, 0,20-0,24 mm; interocular distance, 0,64-0,68 mm; head length, 0,40-0,42 mm. Number measured, 2.

Distinguished from *T. kapangae* (BERNHAEUER) by its extremely dark color, the shape of the spermatheca, and the shape of the median lobe of the male genitalia. Distinguished from all other species by the latter two characters.

Holotype ♀ : No. 1641 : Kankunda, 1.300 m, 16-19.IX.1947. In the collection of the Institut des Parcs Nationaux du Congo Belge, Brussels.

Paratype : 1 ♂ : same data as holotype (D.K.).

8. — *Typhloponemys rufotestaceus* BERNHAUER.

Pygostenus rufotestaceus BERNHAUER, Rev. Zool. Afr., 15, 1927, p. 237.

Material examined. — 19 (including 5 ♂♂, 2 ♀♀) : Lusinga, 1.760 m, 27-28.III.1947 (I.P.N.C.B., D.K.); 24 (3 ♂♂, 6 ♀♀) : same locality and altitude, 19.III.1947 (I.P.N.C.B., D.K.); 1 ♂ : same locality and altitude, 7.IV.1947 (I.P.N.C.B.); 16 (2 ♂♂, 3 ♀♀) : same locality and altitude, 28.III.1947 (I.P.N.C.B., D.K.); 1 ♀ : [riv. Kenia, 1.700 m, 28.III.1947] (I.P.N.C.B.).

9. — *Doryloxenus kohli* WASMANN.

Doryloxenus kohli WASMANN, Zool. Jahrb., Suppl., 7, 1904, p. 654.

Material examined. — 1 : Kaswabilenga, bank of the Lufira River, 600 m, 5-9.I.1949, from the stomach of *Phrynobatrachus* sp. B, No. 2106-7 (I.P.N.C.B.).

10. — *Mimocete torpilla* FAUVEL.

Mimocete torpilla FAUVEL, Rev. d'Ent., 18, 1899, p. 8.

Material examined. — 1 : [riv. Kenia, 1.700 m, 28.III.1947] (I.P.N.C.B.).

BIBLIOGRAPHY.

- BERNHAEUER, M., Neue Ameisen- und Termitengäste aus Afrika, insbesondere aus dem Kongogebiet (*Rev. Zool. Afr.*, **15**, 1927, pp. 225-240, 360-385).
- FAUVEL, A., Genres et espèces de Staphylinides nouveaux d'Afrique. III: Sur une Tribu nouvelle Staphylinides (*Pygostenini*) et descriptions de genres et espèces (*Rev. d'Ent.*, **18**, 1899, pp. 1-44).
- WASMANN, E., Zur Kenntnis der Gäste der Treiberameisen und ihrer Wirthe am obern Congo nach den Sammlungen und Beobachtungen von P. HERM. KOHL C. SS. C. bearbeitet (*Zool. Jahrb. Suppl.*, **7**, 1904, pp. 611-682).
-

INDEX
ARRANGED ALPHABETICALLY.

SPECIES.

	Pages.
<i>afer</i> nov. (<i>Typhloponemys</i>)	37
<i>gabonensis</i> FAUVEL (<i>Typhloponemys</i>)	34
<i>hirsutopudenda</i> nov. (<i>Typhloponemys</i>)	35
<i>kohli</i> WASMANN (<i>Dorylozenus</i>)	38
<i>lujae</i> WASMANN (<i>Typhloponemys</i>)	37
<i>raignieri</i> nov. (<i>Typhloponemys</i>)	36
<i>rufotestaceus</i> BERNHAUER (<i>Typhloponemys</i>)	38
<i>schoutedeni</i> BERNHAUER (<i>Typhloponemys</i>)	37
<i>torpilla</i> FAUVEL (<i>Mimocete</i>)	38
<i>zodium</i> nov. (<i>Typhloponemys</i>)	37

PARC NATIONAL DE L'UPEMBA
I. MISSION G. F. DE WITTE

en collaboration avec
W. ADAM, A. JANSSENS, L. VAN MEEL
et R. VERHEYEN (1946-1949).

Fascicule 49 (5)

NATIONAAL UPEMBA PARK
I. ZENDING G. F. DE WITTE

met medewerking van
W. ADAM, A. JANSSENS, L. VAN MEEL
en R. VERHEYEN (1946-1949).

Aflevering 49 (5)

GALERUCINAE (COLEOPTERA CHRYSOMELIDAE)

BY

GILBERT ERNEST BRYANT (London)

This very interesting collection of *Chrysomelidae*, consisting of the Subfamily *Galerucinae*, represented by over 10.000 specimens and many species represented by very long series, I am able to identify 76 species and describe 15 new species.

This is a very difficult group and there are many minute species with practically no characters I am unable to identify, as I do not know many species described by LABOISSIÈRE ⁽¹⁾.

COLEOPTERA.

GALERUCINAE.

OIDINI.

1. — *Aulacophera africana* WEISE.

WEISE, Deutsche Zeitschr., 1903, p. 36 (W. Africa).

[Kembwile, rive g. Kalule-Nord, 1.050 m, 28.II.1949 (13 sp.)]; Mukana, Lusinga, 1.810 m, 15.III.1948 (1 sp.); riv. Bowa, affl. dr. Kalule-Nord, 1.050 m, 3.III.1949 (1 sp.); riv. Kande, affl. g. Lupiala, 700 m, 3.X.1947 (1 sp.).

⁽¹⁾ Unless otherwise mentioned, all specimens recorded in this paper were collected by Miss. G. F. DE WITTE.

All the localities between [] are without the Park's boundaries.

2. — **Idacantha hastata** LABOISSIÈRE.

LABOISSIÈRE, Rev. Zool. afric., IX, 1921, p. 67, f. 7 (Tanganyika).

Lusinga (Kabwekanono), 1.815 m, 31.V.1945 (1 sp.); Parc National de l'Upemba, 1947-1949 (1 sp.).

3. — **Idacantha decempunctata** LABOISSIÈRE.

LABOISSIÈRE, Bull. Soc. Ent. Fr., 1926, p. 192 (Rhodesia).

Lusinga, 1.760 m, 4.IV.1947 (7 sp.)

4. — **Leptaulaca fissicollis** THOMSON.

THOMSON, Arch. ent., II, 1858, p. 218 (Guinea).

Gorges de la Pelenge, 1.150 m, 10-14.VI.1947 (3 sp.); [Kembwile, rive g. Kalule-Nord, 1.050 m, 28.II.1949 (1 sp.)]; Kaziba, affl. g. Senze, 1.140 m, 4-12.II.1948 (1 sp.); Lusinga, 1.760 m, 2.IV.1947 (1 sp.).

var. **tristis** LABOISSIÈRE.

LABOISSIÈRE, Rev. Zool. afr., IX, 1921, p. 58.

Gorges de la Pelenge, 1.150 m, 10-14.VI.1948 (1 sp.); Mabwe, 585 m, 12-17.XII.1948 (1 sp.).

5. — **Leptaulaca vinula** ERICHSON.

ERICHSON, Stett. Ent. Zeit., XX, 1859, p. 315 (Guinea).

Gorges de la Pelenge, 1.150 m, 10-14.VI.1947 (2 sp.); [Kembwile, rive g. Kalule-Nord, 1.050 m, 28.II.1949 (4 sp.)]; Mabwe, 585 m, 2.II.1949 (1 sp.).

6. — **Leptaulaca festiva** GERSTAECKER.ab. **particularis** WEISE.

WEISE, Arch. f. Nat., LXVIII, 1902, p. 148 (W. Africa).

Gorges de la Pelenge, 1.150 m, 10-14.VI.1947 (7 sp.) (80 vars).

7. — **Copa delata** ERICHSON.

ERICHSON, Arch. f. Nat., IX, 1843, p. 165 (C. Africa).

Mabwe, 585 m, 3-12.I.1949; riv. Bowa, affl. dr. Kalule-Nord, 1.050 m, 1.III.1949; [Kembwile, rive g. Kalule-Nord, 1.050 m, 28.II.1949] (172 sp.).

8. — **Dilinsa acutipennis** LABOISSIÈRE.

LABOISSIÈRE, Rev. Zool. afr., X, 1922, p. 225 (Congo Belge).

Kankunda, 1.300 m, 13-19.XI.1947 (22 sp.); Kateke, sous-affl. Lufira, 960 m, 23.XI-5.XII.1948 (3 sp.).

9. — **Dilinsa overlaeti** LABOISSIÈRE.

LABOISSIÈRE, Rev. Zool. Bot. afr., 84, 1940, p. 8 (Congo Belge).

Kateke, sous-affl. Lufira, 960 m, 23.XI-5.XII.1948 (1 sp.).

10. — **Mellesianella viridipennis** LABOISSIÈRE.

LABOISSIÈRE, Rev. Zool. afr., X, 1922, p. 229 (Albertville).

Lusinga, 1.760 m, 1-8.XII.1947 (420 sp.).

11. — **Schematizella erythrocephala** LABOISSIÈRE.

LABOISSIÈRE, Bull. Soc. ent. Fr., 1920, p. 100 (Congo Belge).

Kaziba, affl. g. Senze, 1.140 m, 4-12.II.1948 (12 sp.); Lusinga, 1.760 m, 9-17.XII.1947 (7 sp.).

12. — **Pachytoma gigantea** ILLIGER.

ILLIGER, in Wiedem. Arch., II, 2, 1800, p. 181 (C. Africa, etc.).

[Kembwile, rive g. Kalule-Nord, 1.050 m, 3-5.III.1949]; gorges de la Pelenge, 1.150 m, 16-20.VI.1947; Lusinga, 1.760 m, 4.IV.1947 (282 sp.).

13. — **Hydrogaleruca funesta** JACOBY.

JACOBY, Notes Leyd. Mus., IX, 1887, p. 236 (W. Africa).

Mabwe, 588 m, 3-6.I.1949 (787 sp.).

14. — **Megaleruca parvicollis** HAROLD.

HAROLD, Col. Hefte, XVI, 1879, 214 (W. Africa).

Gorges de la Pelenge, 1.150 m, 6-10.VI.1947 (11 sp.).

15. — **Hemiphracta lurida** ALLARD.

ALLARD, Ws. Arch. f. Nat., 1902, p. 157 (W. Africa).

Kiamakoto-Kiwakishi, 1.070 m, 4-16.X.1948 (2 sp.).

GALERUCINI.

1. — **Buphonella** sp.

Kaziba, affl. g. Senze, sous-affl. dr. Lufira, 1.140 m, 4.II.1948 (2 sp.); Kanonga, affl. dr. Fungwe, 700 m, 17-21.II.1948 (1 sp.); riv. Bowa, affl. dr. Kalule-Nord, près Kiamalwa, 1.050 m, 1-3.III.1949 (1 sp.); Lusinga, 1.170 m, 12-17.XII.1947 (1 sp.).

2. — **Buphonella metallica** JACOBY.

JACOBY, Ann. Soc. Ent. France, LXXVI, 1907(08), p. 533 (Addis Abbeba).

Mabwe, 585 m, 27-30.XI.1948 (6 sp.); Lusinga, 1.760 m, 1-8.XII.1947 (1 sp.); Kalule-Nord, rive g. face Mujinga-Kalenge, 1.050 m, 28.II-3.III.1949.

3. — **Buphonella** sp.

Mabwe (rive Est lac Upemba), 585 m, 6-9.XII.1948 (1 sp.).

4. — **Lusingania flava** LABOISSIÈRE.

LABOISSIÈRE, Ann. Mus. civ. Genova, LIII, 1929, p. 34 (W. Africa).

Munoi, bif. Lupiala, 890 m, 6-15.VI.1948 (2 sp.); Kabwe s/Muye, affl. dr. Lufira, 1.320 m, 6-12.V.1948 (1 sp.).

LUPERINI.

1. — **Hyperacantha flavodorsata** FAIRMAIRE.

FAIRMAIRE, Ann. Soc. Ent. Fr., LXII, 1893, p. 145 (Guinea).

Kalumengongo (tête source), affl. dr. Lualaba, 1.780 m, 21.I.1948 (1 sp.).

2. — **Hyperacantha hypomelaena** THOMSON.

THOMSON, Arch. Ent., II, 1858, p. 219 (W. Africa).

Lusinga, 1.760 m, 12.III.1949 (4 sp.); gorges de la Pelenge, 1.150 m, 10-14.VI.1947 (1 sp.).

3. — **Hyperacantha senegalensis** LABOISSIÈRE.

LABOISSIÈRE, Rev. Zool. afr., XII, 1924, p. 307 (Sénégal).

Kabwe s/Muye, affl. dr. Lufira, 1.350 m, 6-12.V.1948 (2 sp.); Kiamakoto-Kiwakishi, 1.070 m, 4-16.X.1948 (1 sp.).

4. — **Hyperacantha clavareai** WEISE.

WEISE, Deutsche Ent. Zeitsch., 1903, p. 44, 53, t.1, f. 38 (Congo).

Kanonga, affl. dr. Fungwe, 700 m, 17-22.II.1949 (1 sp.); riv. Bowa, affl. dr. Kalule-Nord, près Kiamalwa, 1.050 m, 1-3.III.1949 (4 sp.); Kaziba, affl. g. Senze, sous-affl. dr. Lufira, 1.140 m, 10-14.II.1948 (1 sp.); Lusinga (galerie), 7-20.VI.1945 (4 sp.); Kalule-Nord, rive g. face Mujinga-Kalenge, 1.050 m, 28.II-3.III.1949 (1 sp.).

5. — **Hyperacantha inaequalis** CHAPUIS.

CHAPUIS, Ann. Mus. Genova, XV, 1879, p. 19 (Abyssinia).

Lusinga (Kabwekanono), 1.815 m, 31.V.1945 (4 sp.); gorges de la Pelenge, 1.150 m, 6-10.VI.1947 (4 sp.).

6. — **Hyperacantha soyauxi** KARSCH.

KARSCH, Berl. Ent. Zeitschr., XXVI, 1882, p. 398 (W. Africa).

Kabwe s/Muye, affl. dr. Lufira, 1.320 m, 6-12.V.1948 (3 sp.); [riv. Kenia, 1.700 m, 28.III.1947 (1 sp.)]; Mukana, Lusinga, 1.810 m, 18.III.1948 (1 sp.).

7. — **Bonesia missis** LABOISSIÈRE.

LABOISSIÈRE, Rev. Zool. Afr., XIV, 1, 1926, 99, fig. 93 (Kapiri).

Kaziba, 1.140 m, 7-12.II.1948 (1 sp.); Kanonga, 700 m, 16-23.II.1949 (4 sp.); Mabwe, 585 m, 17-20.XII.1948 (1 sp.); Kaswabilenga, 700 m, 16-24.X.1947 (1 sp.); Kateke, sous-affl. Lufira, 960 m, 23.XI-5.XII.1947 (1 sp.).

8. — **Luperus brevicornis** JACOBY.

JACOBY, Proc. Zool. Soc. Lond., 1897, p. 588 (Mashonaland).

[Grande Kafwe, affl. dr. Lufwa, 1.780 m, 5.III.1948]; Lusinga, 1.760 m, 12.III.1947; Mukana-Lusinga, 1.810 m, 22-23.IV.1949; Kabwekanono, près tête source Lufwa, 1.815 m, 25.IV.1948; Karibwe, affl. Lusinga, 1.700 m, 8-10.III.1947 (765 sp.).

9. — **Luperus wittei** n. sp.

(Fig. 1.)

Head, prothorax and antennae black. Elytra flavous with a broad sutural longitudinal black stripe and the side margins black. Length : 2,50 mm.

Head black, very finely punctured. Antennae black, extending just beyond the middle of the elytra, the first segment the longest about equal

to the second and third together. Prothorax black, impunctate, the sides broadening to the base, the side margins feebly margined. Scutellum black, triangular, impunctate. Elytra flavous, with a broad black sutural stripe and the side margins narrowly black. Legs flavous with the tarsi tinged with fuscous. Underside black.

Mukana, Lusinga, 1.810 m, 15-19.I.1948 (holotype and paratypes); Lusinga, 1.700 m, 12.IV.1947; [Lufwa, affl. dr. Lufira, 1.700 m, 16.I.1948]; Kalumengongo (tête source), affl. dr. Lualaba, 1.830 m, 21.I.1948; [riv. Lufwa, 1.700 m, 16.I.1948] (243 sp.).

Allied to *L. tugelensis* JACOBY from Natal, but differs in being less elongate and the prothorax not rufous.

10. — **Luperus congoensis** n. sp.

(Fig. 2.)

Head and prothorax black. Elytra brown, with the shoulders with a slanting flavous marking. Antennae and legs brown. Length : 2-2,50 mm.

Head black nitid, a short longitudinal impression between the antennae, and a transverse impression behind the insertion of the antennae. Antennae brown, extending well beyond the middle of the elytra, the first segment the longest, the second and third both short, the fourth slightly longer than the fifth to eleventh each about equal. Prothorax black nitid, transverse, the sides feebly margined. Elytra brown, the shoulders with a slanting flavous patch from the base to the middle of the side margin, the sides gradually broadening to beyond the middle and then rounded to the apex, very minutely punctate. Legs brown, the tibiae very slender. Underside black.

Kabwekanono, 1.815 m, 6.II.1948 (holotype and paratypes); [Grande Kafwe, affl. dr. Lufwa, affl. dr. Lufira, 1.780 m, 1.750 m, 5.III.1948]; Mukana, 1.810 m, 15.III.1948; [riv. Lufwa, affl. dr. Lufira, 1.700 m, 16.II.1948] (385 sp.).

11. — **Luperodes quaternus** FAIRMAIRE.

FAIRMAIRE, Natural., II, 1880, p. 316 (Tropical Africa, etc.).

Mabwe (rive Est lac Upemba), 585 m, 12-15.XII.1948 (1 sp.).

12. — **Luperodes lineatus** KARSCH.

KARSCH, Berl. Ent. Zeitschr., XXVI, 1882, p. 400 (Tropical Africa).

Mabwe, 585 m, 17.XI.1948 (1 sp.); Mukana, Lusinga, 1.810 m, 6.III.1948 (1 sp.); Lusinga, 1.760 m, 4.IV.1947 (2 sp.).

13. — **Exora apicalis** LABOISSIÈRE.

LABOISSIÈRE, Bull. Soc. ent. France, 1919, (20), p. 281 (E. Africa).

Lusinga, 1.760 m, 12-17.XII.1947 (24 sp.); Mabwe (rive Est lac Upemba), 585 m, 11-26.I.1949 (1 sp.); Kankunda, 1.300 m, 19-24.XI.1947 (2 sp.).

14. — **Exora pusilla** GERSTAECKER.

GERSTAECKER, Arch. f. Nat., XXXVII, 1871, 1, 2, p. 84 (E. Africa).

Mukana, Lusinga, 1.810 m, 18.III.1948 (4 sp.); riv. Munte, 1.400 m, 22.IV.1949 (2 sp.).

15. — **Exora kohischutteri** WEISE.

WEISE, Arch. f. Nat., LXIX, 1, 2, 1903, p. 207 (Uganda).

Mabwe (rive Est lac Upemba), 585 m, 17-20.XII.1948 (10 sp.); Lusinga, 1.780 m, 1-8.XII.1947 (13 sp.); Kaswabilenga (rive dr. Lufira), 700 m, 6-9.X.1947 (1 sp.).

16. — **Exora castanea** n. sp.

(Fig. 3.)

Oblong. Castaneous, except the seven apical segments of the antennae tinged with fuscous. Length : 3 mm.

Head castaneous; a short median longitudinal impression between the eyes, impunctate. Antennae with the four basal segments castaneous, the remainder tinged with fuscous, extending to the middle of the elytra; the first segment the longest and slightly dilated at the apex, the second more swollen than the third, the third to the eleventh each about equal. Prothorax castaneous nitid, the sides slightly contracted to the base, feebly margined. Scutellum castaneous nitid, triangular. Elytra castaneous nitid, the sides parallel and rounded to the apex, very feebly punctate. Legs and underside castaneous.

Kaziba, 1.140 m, 19.II.1948 (holotype and 30 paratypes).

Allied to *E. capitatus* JACOBY from Mashonaland, but the head not black and more elongate and parallel sided.

17. — **Exora fulvicollis** n. sp.

(Fig. 4.)

Elongate narrow. Head black; the prothorax, base of antennae and legs fulvous; elytra black. Length : 3,50 mm.

Head black nitid, impunctate; a deep transverse impression between the eyes. Antennae extending to the middle of the elytra; the three basal segments fulvous, the remainder black clothed with pubescence; the first segment long and slender, as long as the second and third together. Pro-

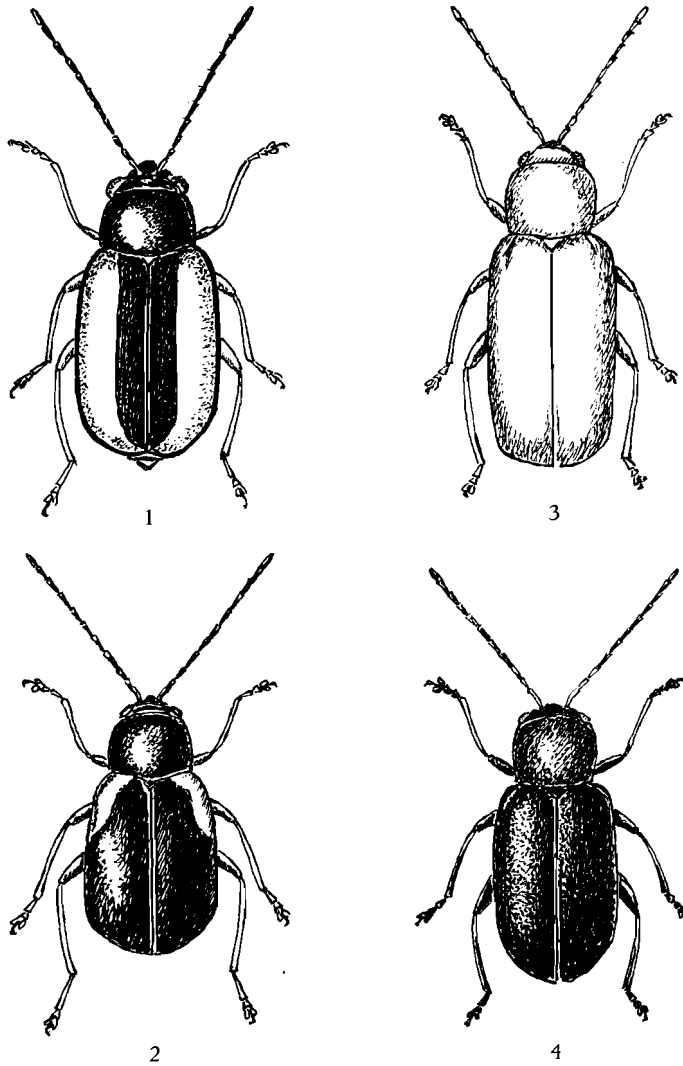


FIG. 1. — *Luperus wittei* n. sp. ($\times 16$).

FIG. 2. — *Luperus congoensis* n. sp. ($\times 16$).

FIG. 3. — *Exora castanea* n. sp. ($\times 14$).

FIG. 4. — *Exora fulvicollis* n. sp. ($\times 11$).

thorax fulvous nitid, impunctate, the sides straight. Scutellum fulvous, triangular, nitid. Elytra elongate, parallel sided rounded to the apex, twice as long as the prothorax, very finely and closely punctate. Legs fulvous. Underside black nitid.

Mukana, 1.810 m, 22-29.IV.1949 (holotype and 27 paratypes); Lusinga, 1.760 m, 23.IV.1949 (2 sp.); [Grande Kafwe, affl. dr. Lufwa, 1.780 m, 5.III.1948 (2 sp.)].

Allied to *E. apicalis* LABOISSIÈRE but differs in not having the two apical spots on the elytra, and in being more parallel sided.

18. — **Exora wittei** n. sp.

(Fig. 5.)

Elongate-ovate. Head fulvous. Prothorax black nitid. Elytra with the basal two thirds fulvous, the apical third black. Legs fulvous. Length : 4,50 mm.

Head fulvous, very minutely punctured, a transverse impression between the eyes. Antennae black, the first segment the longest, the fourth about equal to the second and third together, the fourth to the eleventh each about equal, clothed with pubescence. Prothorax black nitid, transverse; the sides margined and with scattered punctures. Scutellum black nitid. Elytra somewhat ovate, with the basal two thirds fulvous, and the apical third black, the black portion extending slightly up at the suture, closely and finely punctate. Legs and tarsi fulvous, the tarsi with pale pubescence.

Kankunda, 1.380 m, 16-19.XI.1947 (holotype and 29 paratypes); [Lufwa, affl. dr. Lufira, 1.700 m, 16.I.1948 (1 sp.)].

Allied to *E. kohischutteri* WEISE but much smaller, not so elongate and parallel sided, and with the apical portion of the elytra black, and more closely punctured.

19. — **Barombia quadrilineata** LABOISSIÈRE.

LABOISSIÈRE, Bull. Mus. Hist. Nat., 1921, p. 287 (Benguela).

Masombwe, 1.120 m, 4-16.X.1948 (1 sp.); Kiamakoto-Kiwakishi, 1.070 m, 4-16.X.1948 (1 sp.); Kalule-Nord, rive g. face Mujinga-Kalenge, 1.050 m, 28.II.1949 (1 sp.); Lusinga, près Mukana, 1.810 m, 4.VI.1945 (1 sp.).

20. — **Barombia bilineata** n. sp.

(Fig. 6.)

Pale flavous, the elytra with a longitudinal black stripe, the suture and side margins narrowly black. Length : 5 mm.

Head flavous, the basal portion closely punctate, a transverse impression between the eyes. Antennae extending beyond the middle of the elytra, the six basal segments flavous, the remainder tinged with fuscous, the first the longest and slightly dilated at the apex, the second and third short about equal to the fourth, the remainder each about equal. Prothorax pale flavous, very finely punctured, the sides slightly rounded and broadest at the base. Scutellum flavous, triangular, impunctate. Elytra slightly broader than

the base of the prothorax, rounded at the apex, a black longitudinal stripe on each elytron not extending to the apex, the suture and side margins narrowly black, finely and closely punctate, slightly stronger than those on the prothorax. Legs and underside flavous.

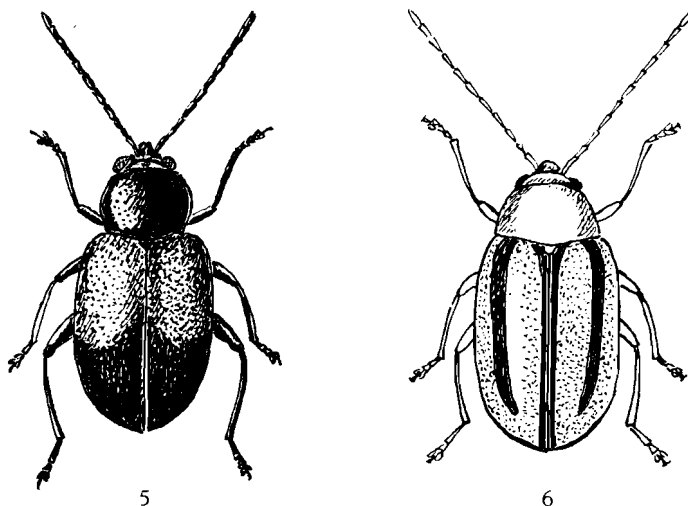


FIG. 5. — *Exora wittei* n. sp. (×8).

FIG. 6. — *Barombia bilineata* n. sp. (×7,5).

Kankunda, 1.300 m, 16-19.XI.1947 (11 sp., holotype and paratypes); Lusinga, riv. Kamitungulu, 1.760 m, 13.XI.1945 (3 sp.).

Allied to *B. quadrilineata* LABOISSIÈRE but differs in the position of the longitudinal striae of the elytra.

21. — **Megalognatha apicicornis** LABOISSIÈRE.

LABOISSIÈRE, Rev. Zool. Afr., 1926-1927, p. 198.

Lusinga, riv. Kamitungulu, 1.760 m, 13.VI.1945 (2 sp.).

22. — **Megalognatha tinantae** LABOISSIÈRE.

LABOISSIÈRE, Rev. Zool. Afr., 1926-1927, p. 39 (Élisabethville).

Lusinga, 1.760 m, 1-8.XII.1947 (12 sp.); [Kenia, affl. dr. Lusinga, 1.580 m, 19.XII.1947 (1 sp.)]; Buye-Bala, 1.750 m, 25-31.III.1948 (1 sp.); Mabwe (rive Est lac Upemba), 585 m, 11-26.I.1949 (3 sp.).

23. — **Megalognatha marginicollis** n. sp.

(Fig. 7.)

Black, except the prothorax margined with fulvous, and the apex of the elytra fulvous. Length : 9 mm.

♂ ♀ : Head black impunctate, a cruciform impression on the vertex. Antennae black, extending slightly beyond the middle of the elytra, with the first segment very dilated about equal to the second and third together, the second very short, the fifth to seventh each somewhat flattened and triangular, the seventh more expanded and pointed. Female with the fifth to seventh segments normal not flattened. Prothorax slightly broader than long, black with the side and front margins broadly fulvous, very finely punctured. Elytra black, with the apex fulvous, irregularly and not closely punctured, the punctures slightly stronger than on the prothorax. Legs black, the tibiae clothed with grey pubescence.

Lusinga, 1.760 m, 8.III.1947 (4 sp., holotype and paratypes); Mukana, Lusinga, 1.810 m, 15-19.I.1948 (2 sp.); [Lufwa, affl. dr. Lufira, 1.700 m, 16.I.1948 (1 sp.)].

Allied to *M. hamaticornis* LABOISSIÈRE but differs in the colour and in the sixth and four apical segments of the antennae.

24. — ***Aulamorphoides pectinicornis*** LABOISSIÈRE.

LABOISSIÈRE, Rev. Zool. Afr., XIV, 1926, p. 115 fig.

Riv. Kateke, sous-affl. Lufira, 960 m, 23.XI.1947 (6 sp.).

25. — ***Aulamorphus histrio*** LABOISSIÈRE.

LABOISSIÈRE, Rev. Zool. Bot. Afr., vol. XIV, fasc. 1, 1926, p. 105.

Lusinga, riv. Kamitungulu, 1.760 m, 13.XI.1945 (2 sp.); Kankunda, affl. g. Lupiala, 1.300 m, 22-28.XI.1947 (2 sp.); Kateke, sous-affl. Lufira, 950 m, 23.XI.1947 (1 sp.); [Kenia, affl. dr. Lusinga, 1.585 m, 19.XII.1947 (1 sp.)].

26. — ***Pseudocrania africana*** JACOBY.

JACOBY, Novit. Zool., I, 1894, p. 530 (Guinea).

Kilwezi 750 m, 6-7.IX.1948 (25 sp.); Kiamakoto-Kiwakishi, 1.070 m, 4-16.X.1949 (8 sp.); Kaswabilenga, 700 m, 16.X.1948 (7 sp.); riv. Lukawe, affl. dr. Lufira, 700 m, 22.X.1947 (1 sp.); Kabwekanono, 1.815 m, 30.IX.1948 (4 sp.); Lusinga, 1.760 m, 18.VII.1947 (13 sp.); Kaziba, affl. g. Senze, 1.140 m, 18-26.II.1948 (5 sp.); [riv. Dipidi, 1.700 m, 10.I.1948 (2 sp.)]; Mukana, 1.810 m, 15-19.I.1948 (1 sp.); Buye-Bala, 1.750 m, 25-31.III.1948 (1 sp.); riv. Lupiala, affl. dr. Lufira, 700 m, 6-9.X.1947 (1 sp.); Masombwe, 1.120 m, 4-16.X.1948 (1 sp.).

27. — ***Hemixantha mozambica*** LABOISSIÈRE.

LABOISSIÈRE, Mon. Estud. Mus. zool. Univ. Coimbra, 1931, 1 (n° 48), p. 42.

Lusinga, 1.760 m, 4-8.III.1947; Karibwe, affl. Lusinga, 1.700 m, 8-10.III.1947; Karibwe, affl. Lusinga, 1.700 m, 8-10.III.1947; Kiamakoto-Kiwakishi, 1.070 m, 4-16.X.1948; [riv. Kenia, 1.700 m, 28.III.1947] (51 sp.).

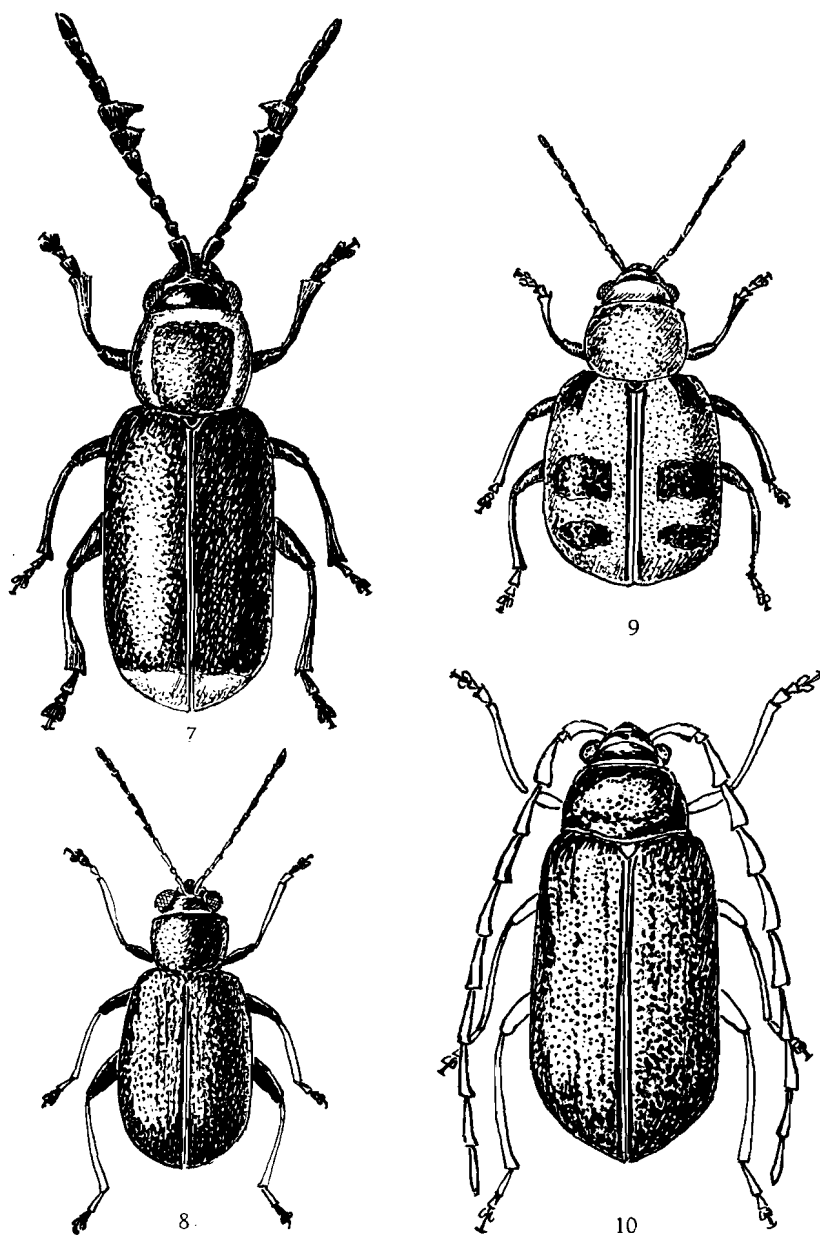


FIG. 7. — *Megalognatha marginicollis* n. sp. (env. $\times 6,5$).

FIG. 8. — *Hemixantha nigrofemorata* n. sp. ($\times 12$).

FIG. 9. — *Estcourtiana sexnotata* n. sp. ($\times 14$).

FIG. 10. — *Platyxantha lusingana* n. sp ($\times 8,5$).

28. — **Hemixantha bifasciata** JACOBY.

JACOBY, Proc. Zool. Soc. Lond., 1899, p. 369, t. 21, f. 7 (Natal).

Kaswabilenga, 700 m, 3-4.XI.1947 (1 sp.).

29. — **Hemixantha scutellata** JACOBY.

JACOBY, Proc. Zool. Soc. Lond., 1897, p. 576 (Mashonaland).

Lusinga (riv. Kamitungulu), 1.760 m, 13.VI.1945 (1 sp.).

30. — **Hemixantha nigrofemorata** n. sp.

(Fig. 8.)

Oblong. Metallic green; prothorax and elytra irregularly punctate, the femora black, the four basal segments of the antennae and the tibiae flavous. Length : 3 mm.

Head dark metallic green nitid, a short longitudinal median impression between the eyes. Antennae extending to the middle of the elytra, the four basal segments flavous, the basal segment tinged with fuscous, the seven apical segments fuscous. Prothorax metallic green, closely and finely punctate, the anterior angles slightly produced, the sides slightly contracted to the base. Scutellum green nitid. Elytra metallic green, closely and irregularly punctate. Legs with the femora black, the tibiae flavous, the tarsi flavous with the apical portion fuscous. Underside black.

Mukana, 1.810 m, 18.III.1948 (holotype and 4 paratypes); [Lufwa, affl. dr. Lufira, 1.700 m, 16.I.1948 (9 sp.)].

Allied to *H. dilutipes* JACOBY from Natal, but smaller, more coarsely punctate and with the femora black.

31. — **Ootheca kibonotensis** WEISE.

WEISE, in SjöST. Kilim., I, 1909, p. 199 (Kilimandjaro).

Lusinga, 1.760 m, 9-17.XII.1947 (5 sp.).

32. — **Ootheca mutabilis** SAHLBERG.

SAHLBERG, in THON. Ent. Arch., II, 1, 1829, p. 27, t. 2, f. 27 (Guinea).

Kapero, 1.760 m, 13.I.1948; Mabwe, rive Est lac Upemba, 585 m, 3-11.I.1949; Kanonga, 675 m, 17-22.II.1949; Kaswabilenga, rive dr. Lufira, 700 m, 22-26.X.1947 (7 sp.).

33. — **Estcourtiana vittata** LABOISSIÈRE.

LABOISSIÈRE, Ann. Soc. Ent. Fr., 1919 (1920), p. 322 (Senegal).

Kalule-Nord, rive g. face Mujinga-Kalenge, 1.050 m, 28.II-3.III.1949; riv. Bowa, affl. dr. Kalule, 1.050 m, 1-3.III.1949; Kanonga, affl. dr. Fungwe, 700 m, 17-22.II.1949 (428 sp.).

34. — **Estcourtiana sexnotata** n. sp.

(Fig. 9.)

Brown, each elytron with 3 black patches. Antennae with the 7 apical segments fuscous, prothorax and elytra closely punctured. Length : 3 mm.

Head brown nitid, the antennae with the 4 basal segments brown, the remainder fuscous, the first segment slightly longer than the second, extending just beyond the base of the elytra. Prothorax brown, the sides feebly margined closely and irregularly punctate. Scutellum small triangular, impunctate. Elytra about twice as long as the head and prothorax together; brown, with a black patch on the shoulders, a larger one just behind the middle and another near the apex, closely and irregularly punctate. Legs brown, clothed with fine grey pubescence.

Kalule-Nord, rive g. face Mujinga-Kalenge, 1.050 m, 28.II-3.III.1949 (2 sp.) (holotype and paratypes); [riv. Lufwa, affl. dr. Lufira, 1.700 m, 16.III.1948 (1 sp.)]; riv. Bowa, affl. dr. Kalule-Nord, près Kiamalwa, 1.050 m, 3.III.1949 (5 sp.); [Grande Kafwe, affl. dr. Lufwa, affl. dr. Lufira, 1.780 m (3 sp.)]; Mukana Lusinga, 1.800 m, 18.III.1948 (2 sp.).

Allied to *E. litura* GERSTAECKER but differs in the position of the black patches.

35. — **Platyxantha lukungensis** JACOBY.

JACOBY, Proc. Zool. Soc. Lond., 1899, p. 371 (Congo).

Mukana Lusinga, 1.810 m, 15-19.I.1948; Kalumengongo, 1.780 m, 21.I.1948; [Lufwa, affl. dr. Lufira, 1.700 m, 16.I.1948]; [Grande Kafwe, affl. dr. Lufwa, affl. dr. Lufira, 1.800 m, 5.III.1948] (31 sp.).

36. — **Platyxantha lusingana** n. sp.

(Fig. 10.)

Elongate, metallic green or blue, the antennae and legs flavous. Length : 7-8 mm.

Head metallic green or blue, the labrum black, a transverse impression between the eyes, nitid. Antennae flavous, extending to the apex of the elytra. The first segment dilated at the apex, the second very short, the third longer than the first, the third to the sixth slightly curved, the four apical segments thinner and straighter, tinged with fuscous. Prothorax metallic green or blue, rugose, a broad transverse impression containing irregular punctures, the sides rounded. Scutellum metallic green, triangular, impunctate. Elytra elongate, metallic green or blue, irregularly punctured, with a trace of a longitudinal carina parallel to the suture. Legs flavous, the tibiae slender. Underside metallic blue.

Mukana, 1.810 m, 1.IV.1947 (4 sp.) (holotype and paratypes); Lusinga, 1.760 m, 15.III.1947 (8 sp.); Kamitungulu, 1.700 m, 3.IV.1947 (1 sp.); [riv. Dipidi, 1.700 mm, 22.IV.1947 (1 sp.)].

Allied to *P. elegans* HAROLD but larger, the elytra not strongly carinate, the antennae longer and the segments thicker and curved.

37. — **Rohania megalophtalma** LABOISSIÈRE.

LABOISSIÈRE, Bull. Mus. Hist. Nat. Paris, 1921, p. 288 (Congo).

Lusinga, Mukana, 1.810 m, 29.V.1945 (1.085 sp.).

38. — **Chimporia monardi** LABOISSIÈRE.

(Fig. 11.)

LABOISSIÈRE, Rev. Suisse de Zool., 1931, p. 415 (Chimporo).

Kalumengongo, 1.780 m, 21.I.1948; Lusinga, riv. Kamitungulu, 1.760 m, 13.VI.1945 (1 sp.); Buye-Bala, 1.750 m, 23-31.III.1948 (5 sp.); Mukana Lusinga, 1.810 m, 6.III.1948 (1 sp.); [Grande Kafwe, affl. dr. Lufira, 1.780-1.830 m, 5.III.1948 (1 sp.)].

39. — **Bonesioides coerulea** ALLARD.

ALLARD, C. r. Soc. Ent. Belg., XXXIII, 1889, p. 102 (Old Calabar).

Kateke, sous-affl. Lufira, 960 m, 23.XI.-5.XII.1947 (1 sp.).

MONOLEPTINI.

1. — **Asbecesta cyanipennis** HAROLD.

HAROLD, Mitt. Munch. Ent. Ver., I, 1877, p. 110 (W. and C. Africa).

[Kembwile, rive g. Kalule-Nord, 28.II.1949 (3 sp.)]; Kabwekanono, 1.814 m, 3-9.VII.1947 (1 sp.).

2. — **Asbecesta unicostata** JACOBY.

JACOBY, Trans. Ent. Soc. Lond., 1895, p. 179 (Togo).

Riv. Kabwekanono, 1.815 m, 3-9.VII.1947 (2 sp.); Lusinga, 1.760 m, 3.VII.1947 (2 sp.).

3. — **Asbecesta monardi** LABOISSIÈRE.

LABOISSIÈRE, Rev. Suisse Zool., 38, 1931, p. 408 (Angola).

Kaziba, affl. g. Senze, sous-affl. dr. Lufira, 1.140 m, 8-14.II.1948; Lusinga, riv. Kamalonge, 1.700 m, 11.VI.1945; riv. Kabwekanono, 1.815 m, 3-9.VII.1947; Mukana Lusinga, 1.810 m, 16.IV.1947 (mousses) (141 sp.).

4. — ***Asbecesta melanocephala*** JACOBY.

JACOBY, Trans. Ent. Soc. Lond., 1895, p. 327 (Mashonaland).

Kabwekanono, 1.815 m, 3-9.VII.1947 (33 sp.); Lusinga (Mukana), 1.810 m, 20-21.VI.1946 (7 sp.).

5. — ***Asbecesta sobrina*** WEISE.

WEISE, Deutsche Ent. Zeitschr., 1905, p. 330 (Usambara).

Kabwekanono, 1.815 m, 3-9.VII.1947 (9 sp.); Lusinga, riv. Kamalonge, \pm 1.700 m, 11.VI.1945 (6 sp.).

6. — ***Asbecesta duvivieri*** JACOBY.

JACOBY, Proc. Zool. Soc. Lond., 1899, p. 359 (Congo).

Kabwekanono, 1.815 m, 3-9.VII.1947; Lusinga, (riv. Kamalonge), \pm 1.700 m, 11.VI.1945; [Grande Kafwe, affl. dr. Lufwa, 1.780 m, 3.III.1948]; Mukana Lusinga, 1.810 m, 6.III.1948; [riv. Lufwa, affl. dr. Lufira, 1.700 m, 16.III.1948] (1.200 sp.).

7. — ***Asbecesta nigripes*** n. sp.

(Fig. 12.)

Head, prothorax, antennae and legs black; the elytra dark metallic blue, irregularly punctured. Length : 6 mm.

Head black nitid, with a transverse impression behind the insertion of the antennae and two fulvous spots at the base of the antennae. Eyes not very prominent, antennae not quite extending to the middle of the elytra, the first segment the longest and more dilated at the apex, the second very short, about half as long as the third, black clothed with grey pubescence. Prothorax transverse, black nitid, the sides margined, a deep transverse impression before the basal margin containing a few punctures. Scutellum black, triangular, nitid. Elytra dark metallic blue, the sides slightly broadening beyond the middle, rounded at the apex, irregularly punctured. Legs and underside black.

Gorges de la Pelenge, 1.150 m, 16-23.VI.1947 (3 sp.) (holotype and paratypes); Mubale, 1.480 m, 1-20.V.1947 (14 sp.); Lusinga, 1.760 m, 7.V.1947; 18.VII.1947 (2 sp.); Kabwe s/Muye, 1.320 m, 23-25.V.1948 (1 sp.).

Allied to *A. unicastata* JACOBY but much larger and without the costae on the elytra.

8. — **Asbecesta nigricollis** n. sp.

(Fig. 13.)

Head, prothorax, apical segments of the antennae and legs black. Elytra fulvous, closely punctate. Length : 3,50 mm.

Head black nitid, with two round fulvous spots on the base and a transverse impression between the eyes. Antennae extending slightly beyond the base of the elytra, the four basal segments fulvous, the remainder black, the first more dilated at the apex, the second short and rounded. Prothorax black nitid, a few fine scattered punctures, and a deep transverse impression behind the middle, the sides feebly margined. Scutellum black, triangular nitid. Elytra fulvous, closely punctate, narrowest at the base, the sides slightly expanding to beyond the middle and rounded to the apex. Legs and underside black.

Lusinga (riv. Kamalonge), \pm 1.700 m, 11.VI.1945 (64 sp) (holotype and paratypes); riv. Kabwekanono, 1.815 m, 3-9.VII.1949 (7 sp.).

Allied to *A. polita* JACOBY from Cameroons, but differs in the head and prothorax and legs black, and slightly smaller.

9. — **Strobiderus africanus** JACOBY.

JACOBY, Proc. Zool. Soc. Lond., 1900, p. 265 (Cameroons).

Lusinga, 1.700 m, 1-8.XII.1947; Buye-Bala, 1.750 m, 25-31.III.1948; Kaziba, affl. g. Senze, 1.140 m, 18-26.II.1948; riv. Bowa, affl. dr. Kalule-Nord, près Kiamalwa, 1.050 m, 1-3.III.1949; Mukana-Lusinga, 1.810 m, 15-19.I.1948; gorges de la Pelenge, 1.150 m, 30.V.1947; [Kembwile, rive g. Kalule-Nord, 28.II.1949]; [riv. Dipidi, 1.700 m, 10.I.1948]; riv. Kihuhuma, rég. Mugando, 27.IV.1945 (47).

10. — **Monolepta intermedia** RITSEMA.

RITSEMA, Tijdschr. Ent., XVIII, 1875, p. 22 (Tropical Africa).

Kapero, 1.700 m, 13.I.1948; Mabwe, 585 m, 3-12.I.1949; Lusinga (Mukana), 1.810 m, 20-21.VI.1945; Kabwekanono, près tête source Lufwa, 1.815 m, 12.I.1948; [riv. Dipidi, 1.700 m, 9.I.1948] (346 sp.).

11. — **Monolepta allardi** WEISE.

WEISE, Ergebn. z. Deutsch. Zentr. Afr. Exp., Zool., I, 1915, p. 177 (Senegal).

Kanonga, 675 m, 17-22.II.1949 (2 sp.); Lusinga, 1.760 m, 12-17.XII.1947 (2 sp.); Kiamakoto-Kiwakishi, 1.070 m, 4-16.X.1948 (1 sp.).

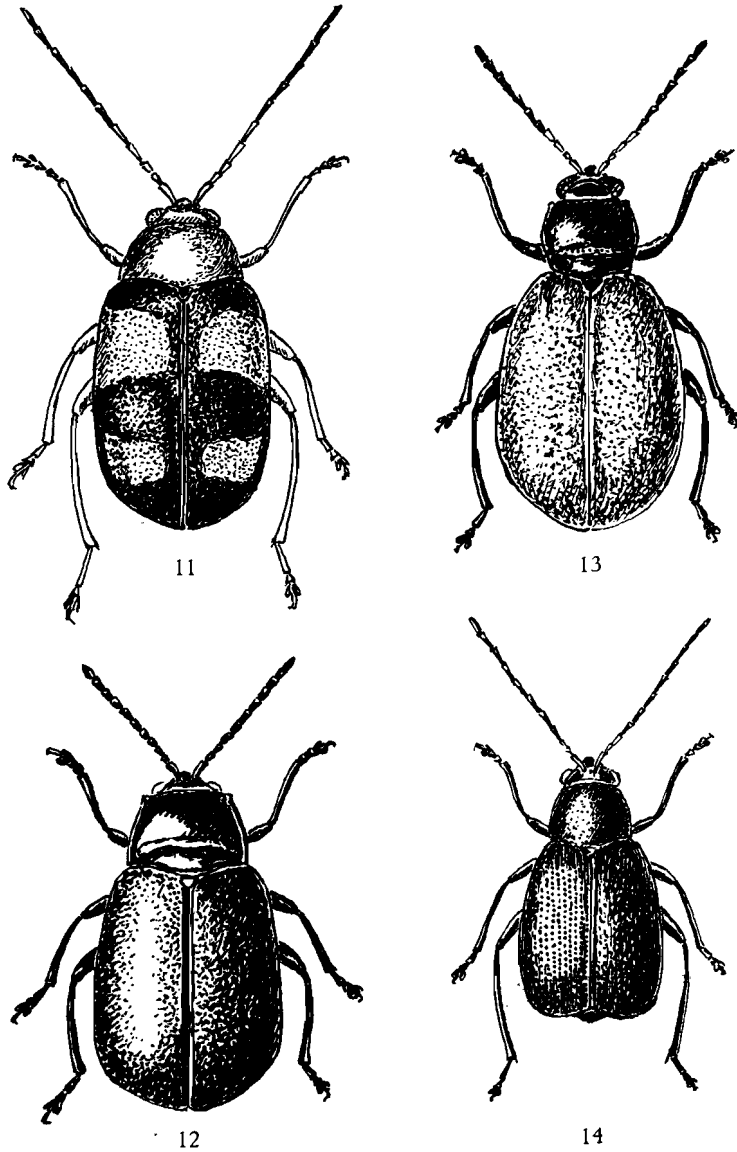


FIG. 11. — *Chimporia monardi* LABOISSIÈRE ($\times 7$).

FIG. 12. — *Asbecesta nigripes* n. sp. ($\times 7$).

FIG. 13. — *Asbecesta nigricollis* n. sp. ($\times 13,5$).

FIG. 14. — *Monolepta multistriata* n. sp. ($\times 17$).

12. — **Monolepta apicalis** SAHLBERG.

SAHLBERG, Periculi Ent., V, 1823, p. 65, t. 4, f. 1 (Tropical Africa).

Kaziba, affl. g. Senze, 1.140 m, 4-12.II.1948 (1 sp.); Kabwekanono, 1.815 m, 3-9.VII.1947 (1 sp.); Lusinga, 1.760 m, 4.V.1949 (2 sp.); Katongo, affl. Mubale, 1.750 m, 12.IV.1948 (1 sp.).

13. — **Monolepta pauperata** ERICHSON.

ERICHSON, Arch. f. Nat., IX, 1, 1843, p. 265 (Ashanti).

Kanonga, affl. dr. Fungwe, 700 m, 17-22.II.1949; Mabwe (lac Upemba), 585 m, 4.IX.1947; Kaswabilenga, 1.700 m, 16.X.1947 (205 sp.).

14. — **Monolepta zambesiana** JACOBY.

JACOBY, Trans. Ent. Soc. Lond., 1906, p. 41 (Zambesi).

Katongo, affl. Mubale, 1.750 m, 12.IV.1948 (2 sp.); [riv. Lufwa, 1.700 m, 16.I.1948 (1 sp.)]; Lusinga (Mukana), 1.810 m, 28.V.1945 (4 sp.).

15. — **Monolepta elegans** ALLARD.

ALLARD, Naturaliste, (2), X, 1888, p. 286, f. 1 (Congo).

Riv. Dipwa, 1.900 m, 17.I.1948; [riv. Dipidi, 1.700 m, 10.I.1948]; Mukana Lusinga, 1.810 m, 15-19.I.1948; Lusinga, 1.700 m, 5.IV.1947; Masombwe, 1.120 m, 6-9.VII.1948; Kaziba, affl. g. Senze, 1.140 m, 8-14.II.1948 (100 sp.).

16. — **Monolepta duvivieri** JACOBY.

JACOBY, Proc. Zool. Soc. Lond., 1897, p. 573 (Niger-Benue).

Kilwezi, 750 m, 2-12.VIII.1948; [riv. Dipidi, tête source, affl. dr. Lufwa, 1.700 m, 10.I.1948] (100 sp.).

17. — **Monolepta haematura** FAIRMAIRE.

FAIRMAIRE, C. r. Soc. Ent. Belg., XXXV, 1891, p. 305.

Mabwe, 585 m, 17.IX.1948 (26 sp.).

18. — **Monolepta centromaculata** JACOBY.

JACOBY, Proc. Zool. Soc. Lond., 1900, p. 261, t. 20, f. 10 (Natal).

Kanonga, 675 m, 17-22.II.1949; Mukana (Lusinga), 1.810 m, 18-19.III.1948; Buye-Bala, 1.750 m, 1-7.IV.1948; Katongo, 1.750 m, 1.IV.1948; Munoi, bif. Lupiala, 890 m, 28.V-15.VI.1948; Buye-Bala, affl. g. Muye, 1.750 m, 25-31.III.1948 (42 sp.).

19. — **Monolepta vincta** GERSTAECKER.

GERSTAECKER, Arch. f. Nat., XXXVII, 1871, p. 83 (E. Africa).

Kilwezi, 750 m, 2-7.VIII.1948; Lusinga, 1.760 m, 28.XI-6.XII.1947; Loie, affl. g. Lufira, 1.000 m, 6.VI.1949; gorges de la Pelenge, 1.150 m, 19.VI.1947; riv. Lupiala, 850 m, 24.X.1947; Kamitungulu, affl. Lusinga, 1.700 m, 4-7.III.1947; Munoi, bif. Lupiala, 890 m, 28.V-15.VI.1948; riv. Munte, 1.400 m, 22.IV.1949; Buye-Bala, affl. g. Muye, 1.750 m, 8-16.IV.1948; riv. Dipidi, tête source, affl. dr. Lufwa, 1.700 m, 10.I.1948 (201 sp.).

20. — **Monolepta morio** JACOBY.

JACOBY, Trans. Ent. Soc. Lond., 1906, p. 44 (Ogowe).

Kankunda, 1.300 m, 19-24.XI.1947 (321 sp.).

21. — **Monolepta dahlmani** JACOBY.

JACOBY, Proc. Zool. Soc. Lond., 1899, p. 378 (E. Africa).

Kaziba, affl. g. Senze, sous-affl. dr. Lufira, 1.140 m, 10-14.II.1948; Kanonga, affl. dr. Fungwe, 700 m, 17-22.II.1949 (1 sp.); Kiamakoto, entre Masombwe-Mukana, 1.070 m, 4-16.X.1948 (3 sp.).

22. — **Monolepta goldingi** BRYANT.

BRYANT, Stylops, 2, 1933, p. 254, fig. (S. Nigeria).

Buye-Bala, 1.750 m, 1-7.IV.1948; Kankunda, 1.300 m, 22-24.XI.1947; gorges de la Pelenge, 1.150 m, 10-14.VI.1947; Lusinga, 1.700 m, 1.IV.1949; Katongo, 1.750 m, 1.IV.1948 (96 sp.).

23. — **Monolepta pygidialis** JACOBY.

JACOBY, Trans. Ent. Soc. Lond., 1906, p. 41 (Natal).

Lusinga, 1.700 m, 4.V.1949 (2 sp.); Kanonga, affl. dr. Fungwe, 700 m, 17-21.II.1949 (2 sp.); Kaziba, affl. g. Senze, sous-affl. dr. Lufira, 1.140 m, 4-12.II.1948; Kabwe s/Muye, 1.320 m, 6-12.V.1948 (1 sp.).

24. — **Monolepta tenuicornis** JACOBY.

JACOBY, Proc. Zool. Soc. Lond., 1899, p. 379 (Sierra Leone).

Riv. Bowa, affl. dr. Kalule-Nord, près Kiamalwa, 1.050 m, 1-3.III.1949; Kalule-Nord, rive g. face Mujinga-Kalenge, 1.050 m, 28.II-3.III.1949; Kankunda, affl. g. Lupiala, 1.300 m, 23-28.XI.1947 (100 sp.).

25. — **Monolepta opulenta** JACOBY.

JACOBY, Stett. Ent. Zeit., LXIV, 1903, p. 335 (Cameroons).

Mabwe, rive Est lac Upemba, 585 m, 28.XI-2.XII.1948 (1 sp.).

26. — **Monolepta multistriata** s. sp.

(Fig. 14.)

Deep metallic blue green; antennae and legs black. Prothorax with scattered punctures, slightly transverse. Elytra each with about 15 close and strongly punctate striae. Length : 2 m.

Head metallic blue green, with a few fine punctures. Antennae extending just beyond the middle of the elytra, the three basal segments flavous, the remainder black, the first segment about as long as the second and third together, the fourth slightly longer than the third and the fourth to eleventh each about equal. Prothorax slightly transverse, deep metallic blue green, the sides gradually broadening to the base, strongly but not closely punctured. Elytra metallic blue green, each with about fifteen close and strongly punctured striae. Legs and underside black.

[Riv. Kenia, affl. dr. Lusinga, 1.585 m, 19.XII.1947 (6 sp.) (holotype and paratypes)]; Kankunda, affl. g. Lupiala, 1.300 m, 22-28.XI.1947 (5 sp.); Mabwe (rive Est lac Upemba), 586 m, 20-26.I.1949 (1 sp.).

Allied on account of its small size to *M. gossypiperda* BRYANT but differs in colour and in having the closely striate elytra.

27. — **Sesselia nigrocincta** n. sp.

(Fig. 15.)

Elongate, head prothorax antennae and legs fulvous. Elytra pale ivory, margined with black. Length : 4,50 mm.

Head fulvous, impunctate, with a median longitudinal impression; the eyes prominent. Antennae fulvous, extending to the middle of the elytra, the first segment the longest and dilated at the apex, the second and third short. Prothorax fulvous nitid, slightly transverse, the sides slightly rounded. Scutellum fulvous, triangular, impunctate. Elytra elongate, slightly broader at the base than the prothorax, the sides broadening to beyond the middle and then rounded to the apex, pale ivory margined with black, the basal and apical being broader. Legs and underside fulvous.

Riv. Lukawe, 700 m, 28.X.1947 (14 sp.) (holotype and 13 paratypes).

Allied to *S. (Malacosoma) pusilla* GERSTAECKER but differs in the colour of the elytra pale and margined with black, *S. pusilla* with the central portion metallic green and margins fulvous.

28. — *Palpoxena wittei* n. sp.

(Fig. 16.)

Elongate, narrow, black, with the antennae and legs flavous nitid and impunctate. Length : 3,50 mm.

Head black, with the labrum flavous, nitid, a short longitudinal impression behind the insertion of the antennae not extending to the base. Eyes

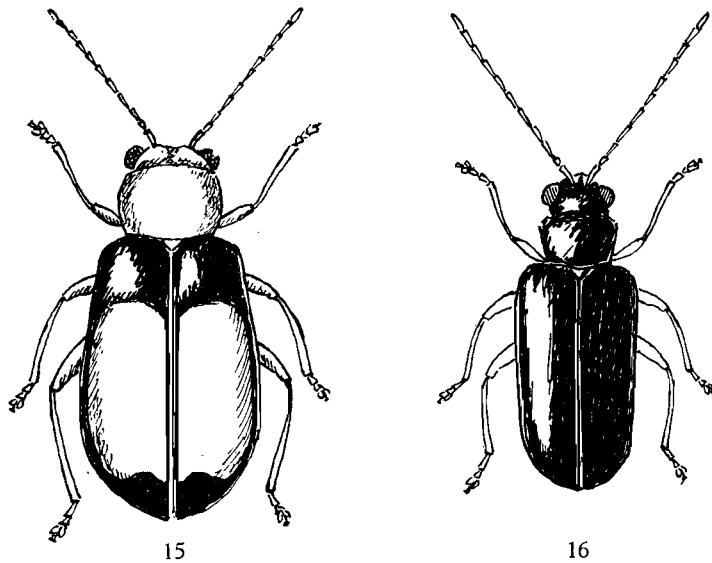


FIG. 15. — *Sesselia nigrocincta* n. sp. ($\times 13$).

FIG. 16. — *Palpoxena wittei* n. sp. ($\times 12$).

rather prominent. Antennae flavous, extending beyond the middle of the elytra; the first segment the longest, the second very short, the third slightly shorter than the first, the third to eleventh each about equal. Prothorax black nitid, very transverse, a deep transverse impression across the middle, front margin slightly broader than the basal margin. Scutellum black nitid. Elytra elongate and narrow, black nitid, impunctate, the sides straight and rounded at the apex. Legs flavous, tibiae and tarsi slender.

Kenia, affl. dr. Lusinga, 1.585 m, 19.XII.1947 (holotype); Lusinga, 1.760 m, 9-17.XII.1947; Kalumengongo, 1.780 m, 21.I.1948; Mukana-Lusinga, 1.810 m, 15-19.I.1948; Mabwe (rive Est lac Upemba), 585 m, 12-15.XII.1948; 11.I.1949; Kankunda, 1.300 m, 14-28.XI.1947 (52 sp.).

Somehat allied to *P. verticalis* JACOBY but differs in its black nitid colour, smaller and narrower.

APOPHYLIINI.

1. — **Apophylia wittei** LABOISSIÈRE.

LABOISSIÈRE, Expl. Parc Nat. Albert, Miss. G. F. DE WITTE (1933-1935), fasc. 31, 1940, p. 21 (Congo).

Kanonga, affl. dr. Fungwe, 700 m, 17-22.II.1949 (2 sp.).

2. — **Apophylia holosericea** LABOISSIÈRE.

LABOISSIÈRE, Rev. Zool. Afr., X, 1922, p. 250 (E. Africa).

Kaswabilenga, 700 m, 8.XI.1947 (5 sp.).

3. — **Apophylia chloroptera** THOMSON.

THOMSON, Arch. Ent., II, 1858, p. 221 (Gaboon).

Kaswabilenga, 700 m, 8.XI.1947 (18 sp.); Kanonga, affl. dr. Fungwe, 700 m, 17-22.II.1949 (1 sp.); Kaswabilenga, 700 m, 14.X.1947.

4. — **Gastrida abdominalis** CHAPUIS.

CHAPUIS, Ann. Mus. Genova, XV, 1879, p. 21 (Africa).

Lusinga, riv. Kamitungulu, 1.760 m, 13.VI.1945 (43 sp.); Kabwe (rive Est lac Upemba), 585 m, 11-26.I.1948 (5 sp.).

INDEX ARRANGED ALPHABETICALLY.

SPECIES.

	Pages.		Pages.
<i>abdominalis</i> CHAPUIS (<i>Gastrida</i>) ...	63	<i>flavodorsata</i> FAIRMAIRE (<i>Hyperacantha</i>) ...	44
<i>acutipennis</i> LABOISSIÈRE (<i>Dilinsa</i>) ..	43	<i>fulvicollis</i> NOV. (<i>Exora</i>) ...	47
<i>africana</i> JACOBY (<i>Pseudocrania</i>) ...	51	<i>funesta</i> JACOBY (<i>Hydrogaleruca</i>) ...	43
<i>africana</i> WEISE (<i>Aulacophera</i>) ..	41	<i>gigantea</i> ILLIGER (<i>Pachytoma</i>) ...	43
<i>africanus</i> JACOBY (<i>Strobiderus</i>) ..	57	<i>goldingi</i> BRYANT (<i>Monolepta</i>) ...	60
<i>allardi</i> WEISE (<i>Monolepta</i>) .	57	<i>haematura</i> FAIRMAIRE (<i>Monolepta</i>) ...	59
<i>apicalis</i> LABOISSIÈRE (<i>Exora</i>) ...	47	<i>hastata</i> LABOISSIÈRE (<i>Idacantha</i>) ...	42
<i>apicalis</i> SAHLBERG (<i>Monolepta</i>) .	59	<i>histrion</i> LABOISSIÈRE (<i>Aulamorphus</i>) .	51
<i>apicicornis</i> LABOISSIÈRE (<i>Megalognatha</i>) ...	50	<i>holosericea</i> LABOISSIÈRE (<i>Apophyllia</i>)	63
<i>bifasciata</i> JACOBY (<i>Hemixantha</i>) ...	53	<i>hypomelaena</i> THOMSON (<i>Hyperacantha</i>) ...	44
<i>bilineata</i> NOV. (<i>Barombia</i>) ..	49	<i>inaequalis</i> CHAPUIS (<i>Hyperacantha</i>) ..	45
<i>brevicornis</i> JACOBY (<i>Luperus</i>) ...	45	<i>intermedia</i> RITSEMA (<i>Monolepta</i>) ...	57
<i>castanea</i> NOV. (<i>Exora</i>) ..	47	<i>kibonotensis</i> WEISE (<i>Ootheca</i>) ...	53
<i>centromaculata</i> JACOBY (<i>Monolepta</i>) ..	59	<i>kohischutteri</i> WEISE (<i>Exora</i>) ...	47
<i>chloroptera</i> THOMSON (<i>Apophyllia</i>) ...	63	<i>lineatus</i> KARSCH (<i>Luperodes</i>) ...	46
<i>clavareai</i> WEISE (<i>Hyperacantha</i>) ...	45	<i>lukungensis</i> JACOBY (<i>Platyxantha</i>) ...	54
<i>coerulea</i> ALLARD (<i>Bonesioides</i>) ..	55	<i>lurida</i> ALLARD (<i>Hemiphracta</i>) ...	43
<i>congoensis</i> NOV. (<i>Luperus</i>) ..	46	<i>lusingana</i> NOV. (<i>Platyxantha</i>) ...	54
<i>cyanipennis</i> HAROLD (<i>Asbecesta</i>) ...	55	<i>marginicollis</i> NOV. (<i>Megalognatha</i>) ...	50
<i>dahlmani</i> JACOBY (<i>Monolepta</i>) ..	60	<i>megalophtalma</i> LABOISSIÈRE (<i>Rohania</i>) ...	55
<i>decempunctata</i> LABOISSIÈRE (<i>Idacantha</i>) ...	42	<i>melanocephala</i> JACOBY (<i>Asbecesta</i>) ...	56
<i>delata</i> ERICHSON (<i>Copa</i>) ...	42	<i>metallica</i> JACOBY (<i>Buphonella</i>) ..	44
<i>duvivieri</i> JACOBY (<i>Asbecesta</i>) ...	56	<i>missis</i> LABOISSIÈRE (<i>Bonesia</i>) ...	45
<i>duvivieri</i> JACOBY (<i>Monolepta</i>) ...	59	<i>monardi</i> LABOISSIÈRE (<i>Asbecesta</i>) ...	55
<i>elegans</i> ALLARD (<i>Monolepta</i>) ...	59	<i>monardi</i> LABOISSIÈRE (<i>Chimporia</i>) ...	55
<i>erythrocephala</i> LABOISSIÈRE (<i>Schematizella</i>) .	43	<i>morio</i> JACOBY (<i>Monolepta</i>) .	60
<i>festiva</i> GERSTAECKER (<i>Leptaulaca</i>) ...	42	<i>mozambica</i> LABOISSIÈRE (<i>Hemixantha</i>) ...	51
<i>fissicollis</i> THOMSON (<i>Leptaulaca</i>) ...	42		
<i>flava</i> LABOISSIÈRE (<i>Lusingania</i>) ...	44		

	Pages.		Pages.
<i>multistriata</i> NOV. (<i>Monolepta</i>)	61	<i>senegalensis</i> LABOISSIÈRE (<i>Hyperacantha</i>)	44
<i>mutabilis</i> SAHLBERG (<i>Ootheca</i>)	53	<i>sexnotata</i> NOV. (<i>Estcourtiana</i>)	54
<i>nigricollis</i> NOV. (<i>Asbecesta</i>)	57	<i>sobrina</i> WEISE (<i>Asbecesta</i>)	56
<i>nigripes</i> NOV. (<i>Asbecesta</i>)	56	<i>soyauxi</i> KARSCH (<i>Hyperacantha</i>) ...	45
<i>nigrocincta</i> NOV. (<i>Sesselia</i>)	61	<i>tenuicornis</i> JACOBY (<i>Monolepta</i>) ...	60
<i>nigrofemorata</i> NOV. (<i>Hemixantha</i>) ...	53	<i>tinantae</i> LABOISSIÈRE (<i>Megalognatha</i>)	50
<i>opulenta</i> JACOBY (<i>Monolepta</i>)	61	<i>unicostata</i> JACOBY (<i>Asbecesta</i>)	55
<i>overlaeti</i> LABOISSIÈRE (<i>Dilinosa</i>) ...	43	<i>vincta</i> GERSTAECKER (<i>Monolepta</i>) ...	60
<i>parvicollis</i> HAROLD (<i>Megaleruca</i>) ...	43	<i>vinula</i> ERICHSON (<i>Leptaulaca</i>)	42
<i>pauperata</i> ERICHSON (<i>Monolepta</i>) ...	59	<i>viridipennis</i> LABOISSIÈRE (<i>Mellesianella</i>)	43
<i>pectinicornis</i> LABOISSIÈRE (<i>Aulamorphoides</i>)	51	<i>vittata</i> LABOISSIÈRE (<i>Estcourtiana</i>) ...	53
<i>pusilla</i> GERSTAECKER (<i>Exora</i>)	47	<i>wittei</i> LABOISSIÈRE (<i>Apophyllia</i>)	63
<i>pygidialis</i> JACOBY (<i>Monolepta</i>)	60	<i>wittei</i> NOV. (<i>Exora</i>)	49
<i>quadrilineata</i> LABOISSIÈRE (<i>Barombia</i>)	49	<i>wittei</i> NOV. (<i>Luperus</i>)	45
<i>quaternus</i> FAIRMAIRE (<i>Luperodes</i>) ...	46	<i>wittei</i> NOV. (<i>Palporena</i>)	62
<i>scutellata</i> JACOBY (<i>Hemixantha</i>)	53	<i>zambesiana</i> JACOBY (<i>Monolepta</i>) ...	59

PARC NATIONAL DE L'UPEMBA
I. MISSION G. F. DE WITTE
en collaboration avec
W. ADAM, A. JANSSENS, L. VAN MEEL
et R. VERHEYEN (1946-1949).
Fascicule 49 (6)

NATIONAAL UPEMBA PARK
I. ZENDING G. F. DE WITTE
met medewerking van
W. ADAM, A. JANSSENS, L. VAN MEEL
en R. VERHEYEN (1946-1949).
Aflevering 49 (6)

GATTUNGEN AULACOCCHILUS DEJEAN UND AMBLYOPUS DEJEAN (COLEOPTERA POLYPHAGA)

Fam. EROTYLIDAE ⁽¹⁾

VON

KURT DELKESKAMP und HANS PHILIPP (Berlin)

Im folgenden teilen wir die Ergebnisse unserer taxonomischen Untersuchungen an den zu den Gattungen *Aulacochilus* DEJEAN und *Amblyopus* DEJEAN gehörenden Erotyliden mit, die durch die Mission G. F. DE WITTE (1946-1949) im National-Park von Upemba erbeutet wurden. Die Verfasser haben sich das Material so aufgeteilt, dass die Bearbeitung der zu *Aulacochilus* gehörenden Exemplare von KURT DELKESKAMP und der zu *Amblyopus* gehörenden von HANS PHILIPP vorgenommen ist.

I. — AULACOCCHILUS DEJEAN.

(VON KURT DELKESKAMP.)

Die 2 im folgenden behandelten Arten der Gattung *Aulacochilus*, deren Vorkommen in Belgisch-Congo und Angola bereits bekannt ist oder sich auf Grund neu eingegangener Ausbeuten ergibt, erheischen insofern ein besonderes Interesse, als beide in auffallender Parallelerscheinung im Gebiet des National-Parks von Upemba aufhellen (Abb. 1 + 2). Dieses Phaenomen manifestiert sich dadurch, dass anstelle von Schwarzfärbung

(1) 24. Beitrag zur Kenntnis der Erotyliden.

in \pm ausgedehntem Masse Rotfärbung tritt. Am augenfälligsten werden hiervon Kopf, Halsschild und Unterseite des Körpers betroffen. Die Elytren zeigen nur bei einer der beiden Arten Aufhellung, indem sie zusätzlich einen 2. roten Längsstreifen parallel zur Aussenkante entwickeln (Abb. 1, *b*).

1. — ***Aulacochilus erythroperonus* DELKESKAMP.**

(Abb. 1, *a*.)

Die bisher von einigen Fundorten in der Provinz Katanga und von einem Fundort in Angola erbrachte Art ist im National-Park von Upemba durch 2 Rassen vertreten.

a) ssp. ***rufobivittatus* n.**

(Abb. 1, *b*.)

Holotypus im « Institut des Parcs Nationaux du Congo Belge » (Brüssel).
Fundort : Munoi, bif. Lupiala, 890 m, 31.V-2.VI.1948. 6 Paratypen.
Länge 9,5-11 mm, Breite 4,5-5,2 mm.

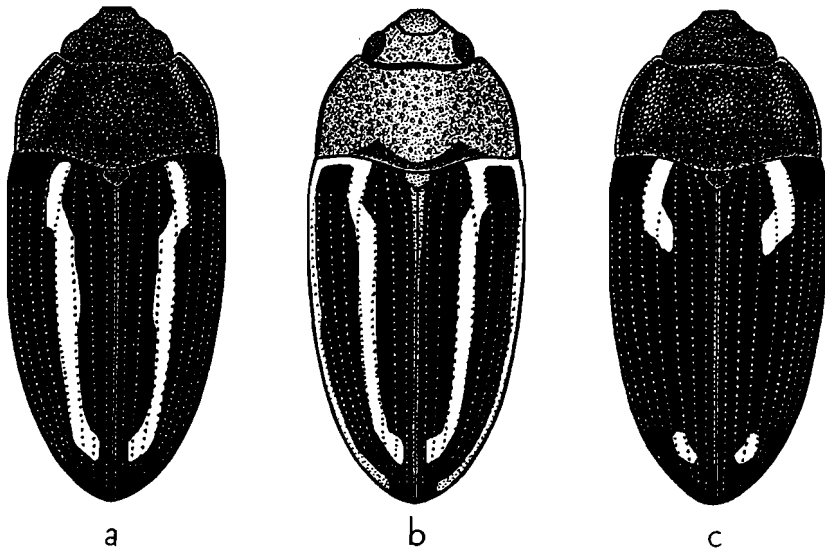


ABB. 1. — *Aulacochilus erythroperonus* DELKESKAMP.

a : ssp. *erythroperonus* DELKESKAMP, Albertville; b : ssp. *rufobivittatus* n.,
Nat. Park Upemba, Kabwe-sur-Muye; c : ssp. *quadriplagiatus* DELKESKAMP,
Nat. Park Upemba, Kaziba.

Im Gegensatz zur Nominatform (Abb. 1, *a*) ist die Rasse beträchtlich aufgehellt, indem anstelle von Schwarzfärbung in \pm grossem Umfange Rotfärbung tritt. So verläuft auf den Flügeldecken ausser dem roten Längsstreifen im 4. Interstitium parallel zur Aussenkante seitlich des 7.

oder 8. Punktstreifens ein 2. roter Längsstreifen, der bei der Nominatform fehlt oder nur bei starker Beleuchtung oder bei Eintauchen in eine Flüssigkeit als schwacher Anflug erkennbar ist. Beide Längsstreifen vereinigen sich nicht vor der Spitze der Elytren, sondern enden im Gegensatz zu denen der folgenden Art frei. Während bei der Nominatform auf dem Halschild lediglich auf beiden Seiten eine zumeist nur bei entsprechender Beleuchtung gut erkennbare Rotfärbung auftritt, wird diese bei der neuen Rasse deutlich sichtbar und erweitert sich derart über die ganze Fläche, dass von der Schwarzfärbung nur noch restliche Flecke übrig bleiben. Der Kopf — bei der Nominatform schwarz — ist bei *r.* zunehmend bis gänzlich rot. Die Unterseite des Körpers — bei der Nominatform dunkel (pechbraun bis schwarz) — ist bei 60 % der Exemplare von *r.* weitgehend bis gänzlich rot. Fundorte :

Munoi, bif. Lupiala, 890 m, 31.V-2.VI.1948 (1 Expl.); Kaswabilenga, 700 m, 8.XI.1947 (2 Expl.); Kabwe-sur-Muye, 1.320 m, 12-14.V.1948 (3 Expl.); Kiamakoto-Kiwakishi, 1.070 m, 4-16.X.1948 (1 Expl.).

b) ssp. **quadriplagiatus** DELKESKAMP.

(Abb. 1, c.)

Gleichwie bei *Plagiopisthen ferrugineus* ARROW die in N.-Rhodesien und im Südwesten des ehemaligen D.O. Afrika beheimatete Rasse *P. ferrugineus ferrugineus* ARROW vom Süden her in das Gebiet des National Parks von Upemba eindringt und nordwärts bisher bis Lusinga festgestellt ist, so scheint auch die von N.-Rhodesien beschriebene Rasse *quadriplagiatus* DELKESKAMP in gleicher Weise in das Gebiet des National-Parks vorzustossen. Sie ist die dunkelste der bisher beschriebenen Rassen. Von den roten Längsstreifen auf den Flügeldecken sind nur je 2 kurze Ansätze übriggeblieben, der eine basal im 5. Interstitium, der andere apikal im 4. Interstitium gelegen (Abb. 1, c). Fundorte :

Kaziba, 1.140 m, 7-12.II.1948 (1 Expl.); Kiamakoto-Kiwakishi, 1.070 m, 4-16.X.1948 (1 Expl.).

2. — **Aulacochilus rufosexvittatus** MADER.

(Abb. 2.)

Die Art ist nach bisherigen Kenntnissen im National-Park von Upemba nur durch 1 Rasse vertreten, die sich als neu erweist.

ssp. **rufior** n.

(Abb 2, b.)

Holotypus im « Institut des Parcs Nationaux du Congo Belge » (Brüssel).
Fundort :

Kiamakoto-Kiwakishi, 1.070 m, 4-16.X.1948.

3 Paratypen vom gleichen Fundort.

Länge 6,3-8,1 mm, Breite 2,9-3,5 mm.

Gleichwie bei der vorhergehenden Art unterscheiden sich auch bei *rufosexvittatus* MADER die Vertreter des National-Parks von Upemba von ihren westlichen Verwandten (Abb. 2, a) durch weitgehende Rufinisierung. Kopf, Halsschild, Unterseite des Körpers und Beine sind in vollem Umfange rot gefärbt. Lediglich auf dem Halsschild treten basal noch kleine schwarze Flecke auf (Abb. 2, b). Alle vorliegenden Exemplare heben sich dadurch ohne Ausnahme so augenfällig von der Nominatform ab, dass sie als Glieder einer eigenen Rasse aufzufassen sind.

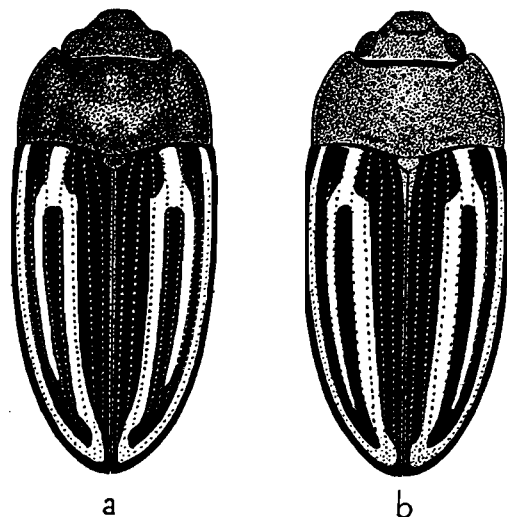


ABB. 2. — *Aulacochilus rufosexvittatus* MADER.
 a : ssp. *rufosexvittatus* MADER, Lulua, Kapanga.
 b : ssp. *rufior* n., Nat. Park Upemba, Kiamakoto-Kiwakishi.

II. — **AMBLYOPUS** DEJEAN.

(VON HANS PHILIPP.)

1. — **Amblyopus senegalensis** LACORDAIRE.

Es liegen 11 voll ausgefärbte Exemplare von folgenden Fundorten vor :
 Kaswabilenga (rive dr. Lufira), 700 m, 6-9.X.1947 (2 Expl.); 22-26.X.1947
 (3 Expl.); Kaswabilenga, 700 m, 16.X.1947 (1 expl.); 17.X.1947 (2 Expl.);
 3-4.XI.1947 (1 Expl.); Piste Lupiala, 900-1.200 m, 23.V.1947 (2 Expl.).

Die Tiere unterscheiden sich vom Typus durch stärkere Chagrinierung der Elytren.

2. — **Amblyopus marginatus marginatus** QUEDENFELDT.

Es liegen ebenfalls 11 Exemplare von 2 Fundorten vor.

Kaswabilenga, 700 m, 13.X.1947 (9 Expl.); 29-30.X.1947 (1 Expl.); Lupiala,
 850 m, 24.X.1947 (1 Expl.).

3. — **Amblyopus grandis** SCHENKLING.

Von dieser Art befinden sich 15 Exemplare von nur einem Fundort in der Sendung. Sämtliche Tiere sind völlig ausgefärbt.

Kankunda, 1.300 m, 13-19.XI.1947 (1 Expl.); 19-24.XI.1947 (14 Expl.).

Die Gründe zur Herausnahme der Art *grandis* SCHENKLING aus der Gattung *Petaloscelis* GORHAM, in die sie von ARROW gestellt worden ist (ARROW, A Systematic Revision of the African Species of the Coleopterous Family *Erotylidae* — Ann. Mag. Nat. Hist., (8), XX, 1917, pp. 137-156), werden in meiner in Kürze erscheinenden monographischen Bearbeitung der Gattungen *Amblyopus* DEJEAN und *Amblyscelis* GORHAM dargelegt.

4. — **Amblyopus natalensis** CROTCH.

Von dieser Art befand sich in der Sendung nur 1 Exemplar mit dem Fundort :

Kaswabilenga, 700 m, 16.X.1947 (1 Expl.).

TABLE GÉNÉRALE DES MATIÈRES

	Pages
1. Drillidae , par Walter WITTMER (Zürich)	3
2. Notoxus, Anthicus and Tomoderes (Fam. Anthicidae), by Frederick D. BUCK (London)	5
Index arranged alphabetically	21
3. Genus Formicomus (Fam. Anthicidae), by Johan C. VAN HILLE (Grahamstown).	23
4. Pygosteninae (Fam. Staphylinidae), by David H. KISTNER (Chicago)	33
Bibliography	39
Index arranged alphabetically	40
5. Galerucinae , by Gilbert Ernest BRYANT (London)	41
Index arranged alphabetically	64
6. Gattungen Aulacochilus DEJEAN und Amblyopus DEJEAN (Fam. Erotylidae), von Kurt DELKESKAMP und Hans PHILIPP (Berlin)	67



Sorti de presse le 15 mars 1958.
