

CHAPTER IV.

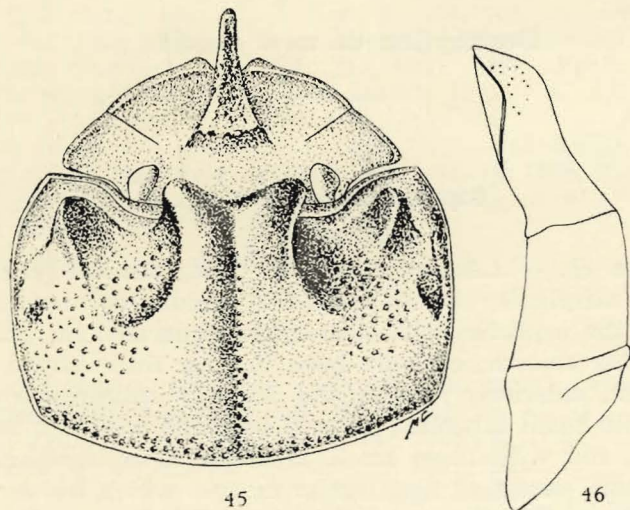
Description of new species ⁽¹⁾**[*Copris basilewskyi* n. sp.].**

(Figs. 45-46.)

Holotype ♂. — Length: 17,5 mm. Body reddish-brown and very shiny. Head marginate; clypeus incised in middle; epistoma rugose-punctate; around the cephalic horn, the epistoma is smooth; genae roughly punctate; vertex smooth; cephalic horn long, a little curved backwards, round at apex, anteriorly smooth and laterally subcarinate and rugose, posteriorly with small tubercles, wide at base and with two tubercles, one of each side, and with three small tubercles close together. Pronotum finely marginate, except at the anterior margin which has a wide margination; anterior declivous nearly vertical, a little concave at middle and laterally produced; in the centre and at base punctate, the punctations forming a triangle whose base is the anterior margin of the pronotum, the punctations continue laterally to the lateral concave impressions; vertex of the triangle continues with the punctures which constitutes the longitudinal median groove of the disc, the groove being very deep; disc is smooth on each side of the groove and very shiny, forming anteriorly two round and diverging lobes; on each side of the pronotum and laterally to these lobes there is a big and roughly punctate concavity, this is limited on the outside by a wide, triangular and finely punctate tubercle; the inner face and the apex of outer face of this tubercle is punctated and at base the punctations are rough; these punctations are continuous with the lateral punctations of the pronotum and the anterior angles, which are not sharp, but subround; lateral foveae deep, punctated and outwardly limited by an elevated, subcarinate and very finely punctated surface; at the hind margin, the pronotum is roughly punctated. Prothoracic episterni punctured and pubescent. Elytra convex, very shiny; striae deep and strongly punctated; intervals slightly convex and smooth; 8th stria not visible at apical half. Metasternum laterally punctured; disc smooth, anteriorly

(1) The species between [] are outside the Park's boundaries.

impressed and with a median longitudinal groove at apical half. Anterior femora hairy, punctated, the punctations a little finer at the upper margin. Intermediate and hind femora at apex and at lower half of the ventral face; at the upper half the punctures are not close together. Abdominal sternites with some punctures. Pygidium marginate, the margination not separated from the surface by a groove at apex; surface densely punctate, except at



FIGS. 45-46. — *Copris basilewskyi* n. sp.
 45 : Head and pronotum (type ♂), dorsal view.
 46 : Aedeagus (type ♂), lateral view.

middle of the base, which is smooth. Anterior tibiae with three outer and big teeth, the fourth one nearly obsolete. Spur of the anterior tibiae curved outwardly.

Holotype ♂ : Stanleyville (R.C.); Litoko (Elengalale), 1954, leg. P. SAUSSUS, M.R.C.B.

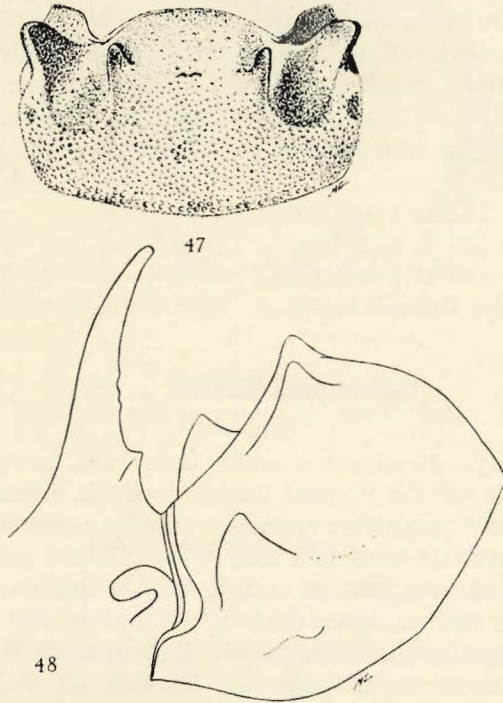
I have the pleasure of naming this new species in honour of Mr. P. BASILEWSKY.

[*Copris brittoni* n. sp.].

(Figs. 47-48.)

Body black, a little shiny. Pubescence reddish-brown. Length 14,5 mm.

Holotype ♂. — Head marginate; clypeus incised at middle and angulose on each side of the incision; epistoma rugose-punctate; genae punctated; vertex finely punctured; cephalic horn very long, nearly straight, a little



Figs. 47-48. — *Copris brittoni* n. sp.

47 : Pronotum (type ♂), dorsal view.

48 : Head and pronotum (type ♂), lateral view.

curved backwardly at apex, laterally flat, laterally and posteriorly rugose and with two small diverging teeth posterior above the base. Pronotum finely marginate, except anteriorly where the margination is wide, especially in front of the eyes; anterior median part elevated, in declivous, punctate, the punctations not dense but abundant, being finer at the upper part of the declivous which has, at the middle, two small and geminate tubercles; on each side and above the declivous is tuberculate; seen from above these

tubercles are pronounced and rhomboid; they are produced downwards, and do not form any sharp ridge or carina, but don't reach the anterior margin of the pronotum, and exterior to these, the pronotum is deeply concave and punctate; exterior to these concavities, the pronotum has a triangular clearly developed, punctate horn; the punctations are denser on the outer face than on the inner face; lateral foveae are small and not carinate outwardly; disc and the whole surface of the pronotum deeply and closely punctate; at the hind margin, the punctations are bigger and shallower; anterior angles are almost right angles and sharp; sides of the pronotum sinuous at the anterior angles. Prothoracic episternum laterally punctate and hairy. Metasternum laterally punctate; disc smooth, anteriorly foveolate and with a slight median groove. Pygidium marginate and deeply punctate. Elytra convex, deeply striate; punctures of the striae very dense; interstriae slightly convex and smooth. Femora densely punctate. Anterior tibiae with four outer teeth. Anterior spur curved inwardly.

Holotype ♂ : Lushato (Tg.), B.M.

I have the pleasure of naming this new species in honour of Dr. BRITTON, entomologist of the British Museum (Natural History), London.

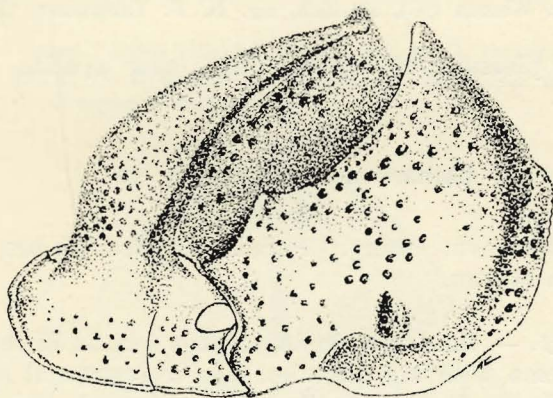
[**Copris pseudobootes** n. sp.].

(Fig. 49.)

Black and shiny. Head much wider than long, marginate and broadly concave at middle of the clypeal margin, which forms two small teeth on each side of this concavity; epistoma punctate; genae strongly angulose and granulose; cephalic horn flat, very wide at basal part, when it is seen from the front it has the form of a leaf, curved backwards, from the base; anterior face very rugose, laterally carinate; posteriorly without tubercles. Pronotum much wider than long; anterior border concave at median part and marginate; lateral margin forming a concavity at the anterior angle, which is pronounced; median part deeply impressed, the concavity roughly punctate and limited on each side, by a large area slightly elevated but which is wider than high and anteriorly and posteriorly dentate at the upper margin and having a small tooth near the anterior tooth; these areas are punctate; lateral foveae roughly punctate; surface of the carina, at lateral foveae, smooth and being prolonged in a small and smooth salience, near the lateral formations. Prothoracic episternum with a transversal carina which does not reach the outer margin of the prothorax. Elytra longer than the head and the pronotum combined; convex, with the striae punctate and the interstriae finely aciculate. Metasternum laterally punctate; metasternal apophysis smooth and very densely punctured laterally, and some punctations at the anterior margin of each sternite. Pygidium punctate, the punctures disappearing at apex; the margination of

the pygidium present at apex. Anterior femora strongly punctate. Median and hind femora with strong not very dense punctations, nearly smooth at the upper margin. Anterior tibiae 4-dentate outwardly. Length : 22 mm.

Holotype ♂ : Usagara (Tg.), 1918, leg. NEVINSON (B.M.).



49

FIG. 49. — *Copris pseudobootes* n. sp.
Head and pronotum (type ♂), lateral view.

[*Copris vrydaghi* n. sp.].

Holotype ♂. — Black and shiny. Antennae rust in colour. Head marginate, densely and strongly punctate; clypeus incised at middle; vertex finely punctate; cephalic horn long, strong, especially at base, a little curved backward, round at apex, laterally punctate and with two tuberculiform and geminate teeth, posteriorly. Pronotum marginate, with the anterior margin a little concave at middle, with the anterior angles pronounced and sharp; anterior median declivous slightly concave, with rugose punctures, leaving a median smooth space; disc with close and strong punctures, longitudinally grooved at middle and with the median lobe 4-tubercululate; median declivous of the pronotum separated from the lateral lamelliform formation by a big concavity covered with scamiform granules; lateral foveae deep and punctate. Elytra convex; striae strongly punctate; interstriae with close but not deep punctation; 8th stria strong, completely joining with the 7th stria, at apex; base carinate from the 6th stria. Pygidium marginate and closely punctate. Mesosternum strongly punctate. Metasternum roughly punctate laterally; metasternal apophysis smooth and longitudinally grooved at middle. Abdominal sternites laterally punctate.

Metasternum roughly punctate laterally; metasternal apophysis smooth and longitudinally grooved at middle. Abdominal sternites laterally punctate. Femora strongly punctate. Anterior tibiae 4-dentate outwardly; anterior spur truncate at apex and directed inwardly. Length 14 mm.

Holotype ♂ : Estcourt (N.), S.A.M.

Paratype ♂ : Weenen (N.), III.1926, leg. H. P. THOMASSET, B.M.

I have the pleasure of naming this new species in honour of Mr. J. VRYDAGH.

[**Catharsius congolensis** n. sp.].

(Fig. 50.)

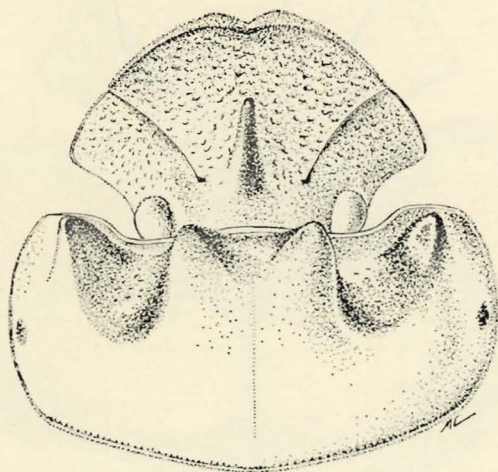
Body reddish-brown, shiny. Pubescence reddish-brown. Antennae reddish. Length 18 mm.

Holotype ♂. — Head marginate; clypeus incised in the centre; genae granulose; epistoma with big granules, like scales; genal sutures carinate and tuberculate in the frons; cephalic horn long, erect, laterally flat, posteriorly bicarinate; between the eyes, the surface is smooth. Pronotum marginate; anterior margin slightly convex; disc slightly grooved in the middle, smooth and shiny, with some fine punctures at hind margin; on the median anterior part, the disc has two saliences, separated by a concavity which is finely grooved in the middle; of each side there is a big concavity which is limited on the outside by a tuberculiform and strong salience; the concavities are punctate; laterally and anteriorly, the pronotum is punctate, the punctation is like small scales; lateral foveae deep; anterior angles obtuse; lateral margin round; at the posterior end there is a row of punctures. Prothoracic episternum punctate and hairy, with a very small transversal carina, only at the margin of the procoxal concavity. Prosternal apophysis punctate and hairy, carinate longitudinally. Mesosternum with very closely punctation. Metasternum shagrinated, except in the middle of the disc, where it is longitudinally grooved; laterally and on the disc, the punctures are pubescent; meso-mesosternal suture slightly round. Abdominal sternites punctate and hairy. Pygidium marginate, the punctures rare and with hairs. Elytra carinate at base, convex; striae punctate; intervals convex and smooth; eighth stria not carinate; apex of the elytra finely punctate. Anterior femora ventrally with rough puncture. Intermediate femora with scattered punctures. Anterior tibiae with three outer teeth; ventral face with three oblique carinae corresponding to each tooth; inner angle of the tibiae produced in a strong tooth; anterior spur a little curved outwardly. Intermediate tibiae with the apical margin straight, not dentate. Hind tibiae with the apical margin also without teeth. Middle and hind tibiae like the other species of *Catharsius*.

One specimen, collected at Bambesa, has the eighth stria of the elytra carinate at base.

This species has been in the genus *Catharsius* HOPE, although one specimen only has the eighth stria carinate at base. All the generical characters belong to the genus *Catharsius*; so the existence of the eighth stria, carinate or not, does not seem sufficiently important as character to permit the separation of the genus *Copris* GEOFFROY from *Catharsius* HOPE.

Material. — Congo : Lulua (Tshala), V.1930, leg. F. G. OVERLAET (1 ♂, holotype, M.R.C.B.), V.1931, leg. F. G. OVERLAET (1 ♂, paratype, M.R.C.B.); Bambesa, 11.V.1938, leg. J. VRYDAGH (1 ♂, paratype, M.R.C.B.).



50

FIG. 50. — *Catharsius congolensis* n. sp.
Head and pronotum (type ♂), dorsal view.

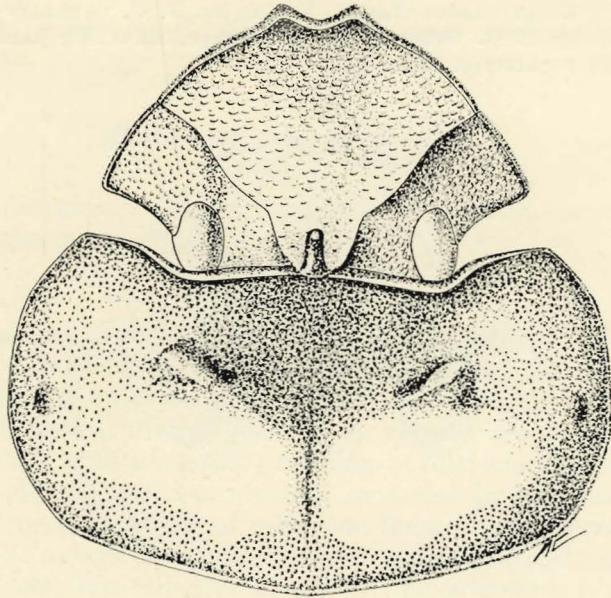
***Catharsius garambae* n. sp.**

(Fig. 51.)

Black. Pubescence reddish-brown. Length 22 mm.

Holotype ♂. — Head marginate; clypeus bilobed at middle and a little curved upward; club of the antennae very long, curved and longer than the scape; epistoma granulose-squamiform; genal sutures elevated; genae granulose; cephalic horn flat, and tongue-like at the base, backwardly curved and with the apical part elongated, conical and slightly curved frontwards; anteriorly, the base of the horn has transversal punctures. Pronotum marginate; anterior median part a little elevated, concave, granulose and laterally and above with a strong tubercle; the granules of the declivous

prolonged in the median groove of the disc, and in a strip at the hind margin of the pronotum; of each side of the median groove, the disc is convex and has a broad and smooth area; laterally and in front of the tubercles of the pronotum, there is also a small shining and smooth area, laterally, the pronotum is completely granulose; lateral foveae with some granules. Elytra a little dull, carinate at base, with not deep striae but with some



51

FIG. 51. — *Catharsius garambae* n. sp.
Head and pronotum (type ♂), dorsal view.

punctures; interstriae finely aciculate; 8th stria carinate at basal half. Pygidium marginate and punctate. Mesasternum laterally granulose; disc foveolate at apex. Abdominal sternites laterally punctate. Anterior femora punctate; intermediate and hind femora nearly smooth. Spur of the anterior tibiae curved inwardly at apex.

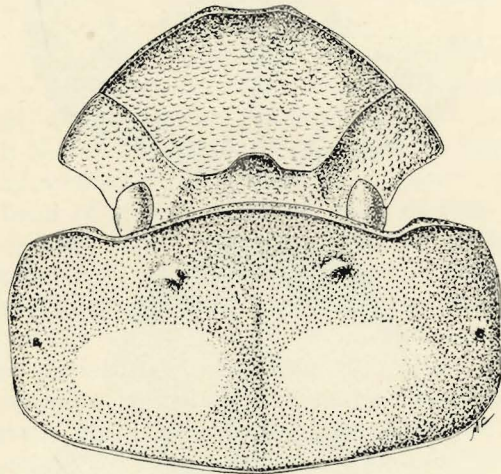
Material. — R.C. : P.N.G., n° 3536, II/ed/6, 27.IV.1952, leg. H.D.S. (holotype, ♂, I.P.N.C.B.).

Catharsius saegeri n. sp.

(Fig. 52.)

Black. Pubescence reddish-brown. Length 19 mm.

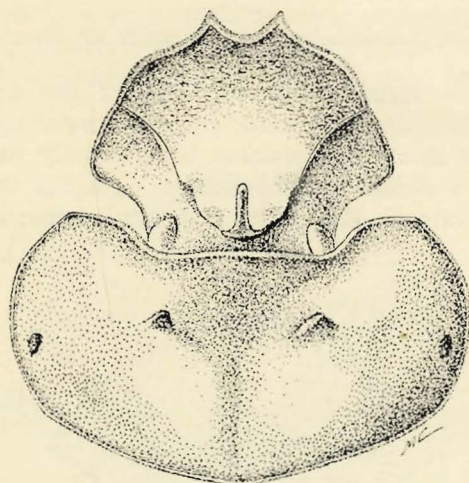
Holotype ♂. — Head marginate; club of the antennae very long, curved and longer than the first joint; clypeus curved upwardly, at middle and slightly concave at centre; epistoma transversally rugose; genae granulo-lose; genal sutures elevated and connected with the transversal cephalic carina, which is elevated in the centre in a small horn; vertex transversally



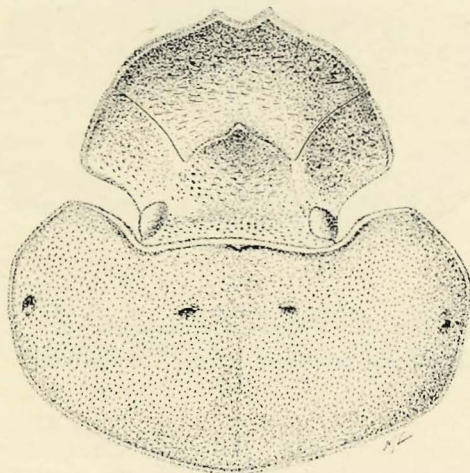
52

FIG. 52. — *Catharsius saegeri* n. sp.
Head and pronotum (type ♂), dorsal view.

granulose. Pronotum marginate and granulose, with two anterior smooth and shining tubercles and two transversal, broad and shiny, of each side of the median groove of the disc; lateral foveae deep. Elytra carinate at base, dull, and with the striae not deep and punctate; first interstria convex; 8th stria carinate at basal half. Pygidium marginate and punctate. Abdominal sternites laterally punctate. Metasternum finely granulose laterally and with fine punctures on the anterior part of the disc and foveolated behind. Anterior femora with broad and widely separated punctures at the apex, from each puncture arises one hair. Intermediate and hind femora with two or three broad punctures with hairs, at apex. Spur of the anterior tibiae curved inwardly.



53



54

FIGS. 53-54. — *Catharsius upembanus* n. sp.
Head and pronotum, dorsal view.
53 : Holotype ♂. — 54 : Allotype ♀.

Allotype ♀. — Head similar to that of the male, with a frontal carina, wide in the middle. Pronotum with two outlines of saliences, anteriorly, and with two shining spots, on each side of the median part of the disc.

I have the pleasure of naming this new species in honour of Mr. H. DE SAEGER.

Material. — R.C. : P.N.G., n° 3687, II/ie/4, 4.VI.1952, leg. H.D.S. (holotype, ♂, I.P.N.C.B.); P.N.G., n° 2098, II/ge/4, 13.V.1951, leg. H.D.S. (allotype, ♀, I.P.N.C.B.).

[**Catharsius upembanus** n. sp.].

(Figs. 53-54.)

Body reddish brown. Pubescence reddish brown. Length 30 mm.

Holotype ♂. — Head marginate; clypeus with two sharp teeth, turned upwardly, widely separated; the clypeus, laterally, is subangulose; epistoma with transversal and irregular punctures; genal sutures produced and continuous with the lateral carina of the cephalic horn; genae with transversal punctures outwardly; frons smooth and shiny; cephalic horn smooth and shiny, in form of a wide blade at base, dentate laterally and ending in a long and narrow horn, slightly curved forwards and with the apex round. Pronotum marginate; anterior margin nearly straight; anterior angles obtuse; surface finely granulose, with two shiny areas, without granules, in front of the prothoracic tubercles and another two, one of each side, behind the same tubercles, in the disc; disc grooved in the middle. Prothoracic episternum punctate and hairy. Metasternum laterally very hairy and punctate; disc longitudinally grooved in the middle and foveolate at apex. Abdominal sternites punctate. Pygidium marginate and densely punctate. Elytra carinate at base, a little dull with a silky aspect; striae punctate; interstriae finely punctate; eighth stria carinate at basal half. Anterior femora with the ventral face punctate, the punctation is very dense and pubescent in the centre. Middle femora with strong punctures at apex, the rest is finely punctate. Hind femora finely punctate, with broad punctures below. Anterior tibiae three-dentate behind.

Allotype ♀. — Head broad, marginate, with the clypeus bidentate, as in the male; epistoma with transverse punctures; frons elevated in a rough, triangular carina, slightly curved to the front; genae entirely granulose. Pronotum very wide and short, marginate, with the lateral margin tubercles, anteriorly.

Material. — R.C. : P.N.U. : Dipidi river (1.700 m), 22.IV.1947, leg. G. F. DE WITTE (holotype, ♂, I.P.N.C.B.); Lusinga (1.760 m), 25.III.1947, leg. G. F. DE WITTE (allotype, ♀, I.P.N.C.B.); Kankunda (1.300 m), 19.XI.1947, leg. G. F. DE WITTE (paratype, ♀, I.P.N.C.B.).

REFERENCES.

- ARROW, G., 1931, Coleoptera Lamellicornia. III : *Coprinae* (*Fauna British India, Col. Lam.*, 3).
- BALTHASAR, V., 1935, Bestimmungstabelle der europäischen Coleopteren. CXV : *Scarabaeidae* des pallarktischen Faunengebietes. Monographische Bestimmungstabelle. I : *Coprinae*. 1 : Troppau.
- 1937, Neue coprophage Scarabaeiden von der Ukerewe-Insel in Ost-Africa [*Arb. morph. tax. Ent. Berl.*, 4 (3) : 192-203].
- 1958, Eine neue Untergattung und einige neue Arten der Gattung *Copris* GEOFFROY [*Acta Ent. Mus. Nat., Pragae*, 32 (517) : 471-480].
- 1961, Coléoptères *Scarabaeidae* nouveaux de l'Afrique tropicale [*Rev. Zool. Bot. Afr.*, 63 (1-2) : 96-104].
- BEDEL, 1892, L'Abeille, 27.
- BOHEMAN, C., 1857, *Insecta Caffrariae*, annis 1834-1845, II.
- BOUCOMONT, A., 1920, *Coprophaga africana*. Genre nouveau et espèces nouvelles [*Rev. Zool. Bot. Afr.*, 8 (2) : 261-269].
- 1921, Synopsis des *Oniticellini* d'Afrique (*Ibid.*, 9 : 197-234).
- 1922, Les Coléoptères coprophages du genre *Pedaria* CASTELNAU (*Bull. Mus. Hist. nat., Paris*, 490-495).
- 1922, Diagnoses de deux espèces nouvelles de Coléoptères Scarabaeides du genre *Pedaria*. Mission J. ROHAN-CHABOT, 1914 (*Ibid.*, Paris, 411-412).
- 1928, *Coprophaga africana*, quatrième note [*Rev. Zool. Bot. Afr.*, 15 (4) : 415-425].
- 1930, *Coprophaga africana*, cinquième note (*Ibid.*, 22).
- 1933, Revision du genre *Anachalcos* HOPE [*Ibid.*, 24 (2) : 183-197].
- 1936, *Coprophaga africana*, huitième note (*Ibid.*, 28 : 493-496).
- BOUCOMONT, A. et GILLET, G., 1927, *Scarabaeidae : Coprinae*. II : *Termitotroginae* (*Coleopterorum Catalogus*, JUNK, parte 90).
- BURMEISTER, C. H. C., 1846, *Gen. Ins.*, Hefte 10.
- CASTELNAU, L. DE, 1832, *Ann. Soc. ent. Fr.*, 1.
- 1840, *Histoire Naturelle des Insectes Coléoptères*, II, Paris.
- ERICHSON, W. F., 1847, *Naturgeschichte der Insecten Deutschlands* begonnen von W. F. ERICHSON, fortgesetzt von H. SCHAUM, G. KRAATZ und von KIESENWETTER.
- FABRICIUS, J., 1781, *Spec. Ins.*
- 1801, *Systema Eleutheratorum*, 1.
- FELSCHÉ, C., 1901, Beschreibungen coprophager Scarabaeiden. (*Deutsche Ent. Zeitschr.*, 135-153)
- 1907, Coprophage Scarabiden (*Ibid.*, 273-295).

- FERREIRA, M. C., 1952, Monografia dos Escarabídeos da Africa do Sul. Tribo *Scarabaeini*, II Parte. Subtribo *Scarabaeides*, nº 3 [*Rev. Fac. Ciênc. Lisboa*, 2ª série, C, **2** (2) : 259-274].
- 1954, Monografia dos Escarabídeos da Africa do Sul. Tribo *Scarabaeini*, II Parte. Subtribo *Scarabaeina*, nº 1 [*Ibid.*, 2ª série, C, **3** (2) : 379-446, 212 figs.].
- 1955, Monografia dos Escarabídeos da Africa do Sul. Tribo *Coprini*, VI Parte [*Bol. Soc. Est. Moçamb.*, (94) : 311-353, 1 mapa, 48 figs.].
- 1956, Chave para a determinação dos géneros e espécies de Gimnopleuríneos sul-africanos (*Arquivos do Museu Bocage*, **27**, Lisboa, 9-20, 40 figs.).
- 1958, Coleoptera *Scarabaeidae. Coprinae* (*South African Animal Life*, **5** : 479-516, 68 figs.).
- 1959, *Scarabaeini, Gymnopleurini, Canthonini* and *Coprini* (Coleoptera Lamellicornia). Fam. *Scarabaeidae* [*Expl. Parc Nat. de l'Upemba*, Mission G. F. DE WITTE, (58) : 1-33, 29 figs.].
- 1961, Catálogo dos Escarabídeos da região etiópica. Tribos *Scarabaeini, Gymnopleurini* e *Oniticellini* (*Bol. Soc. port. Ciênc. nat.*, Lisboa, 2ª série, **8** : 17-157).
- FREY, G., 1956, Ueber einige Onthophagaen des Musée Royal du Congo Belge in Tervuren (Col. *Scarabaeidae*) (*Rev. Zool. Bot. afr.*, **55** : 132-140, 1 fig.).
- GILLET, G., 1907, Remarques sur quelques coprides du Museo Civico de Gênes [*Ann. Mus. Civ. Genova*, **3** (3) : 587-602].
- 1907, Contribution à l'étude des coprophages de la faune africaine (*Ann. Soc. ent. Belg.*, **51** (3) : 177-184).
- 1908, Coprides d'Afrique tropicale. Descriptions d'espèces nouvelles et remarques sur quelques espèces connues (*Mém. Soc. ent. Belg.*, **16** : 63-81).
- 1908, *Ann. Soc. ent. Belg.*, **52** : 56-65.
- 1910, Espèces nouvelles du genre *Copris* et relevé synonymique des espèces décrites à ce jour (*Notes Leyden Mus.*, **32** : 1-31).
- 1911, *Scarabaeidae : Coprinae*, I (*Coleopterorum Catalogus*, JUNK, parte 38).
- 1918, Coprides nouveaux de la région éthiopienne et remarques diverses (*Zool. Mededeelingen*, **4** : 146-158).
- 1933, Lamellicorne Coprophage, deuxième note (*Bull. Ann. Soc. ent. Belg.*, **72** : 323-332).
- GUÉRIN-MÉNEVILLE, F. E., 1829-1844, Iconographie du Règne animal de G. CUVIER, ou représentation d'après nature de l'une des espèces les plus remarquables, et souvent non encore figurées, de chaque genre d'animaux, Paris et Londres.
- HAROLD, E. F., 1869, Coleopterologische Hefte, 5.
- 1875, Ueber einige Coprophagen aus Monrovia (*Stett. Ent. Zeit.*, **36** : 452-456).
- 1878, Ueber Coleopteren aus dem tropischen Afrika (*Mith. Münch. Ent. Ver.*, **2** : 38-53).
- 1879, Coleopterologische Hefte, 16.
- HOPE, F. W., 1837, The Coleopterist's Manual. 1 : Lamellicorn Insects of LINNEUS and FABRICIUS.
- JANSSENS, A., 1936, Notes sur quelques *Onitis* africains (*Bull. Mus. roy. Hist. nat. Belg.*, **12** (8) : 1-6, 11 figs.).
- 1936, Un nouveau genre d'Onitide africain [*Ibid.*, **12** (16) : 1-3, 3 figs.].
- 1937, Revision des Onitides [*Mém. Mus. roy. Hist. nat. Belg.*, 2^e série, (11) : 1-200, 107 figs., 2 pl.].

- JANSSENS, A., 1937, Notes sur les Onitides africains (*Coleoptera Lamellicornia*), deuxième note [*Bull. Mus. roy. Hist. nat. Belg.*, **13** (41) : 1-6, 6 figs.].
- 1938, *Onitini* (*Coleoptera Lamellicornia*). Fam. *Scarabaeidae* [*Expl. Parc Nat. Albert, Mission G. F. DE WITTE 1933-1935*, (12) : 1-18, 4 figs., 1 pl.].
- 1938, Notes sur les Onitides africains (*Coleoptera Lamellicornia*), troisième note [*Bull. Mus. roy. Hist. nat. Belg.*, **14** (22) : 1-13, 13 figs.].
- 1938, *Scarabaeini* (*Coleoptera Lamellicornia*). Fam. *Scarabaeidae* [*Expl. Parc Nat. Albert, Mission G. F. DE WITTE 1933-1935*, (21) : 1-76, 25 figs., 3 pl.].
- 1939, *Oniticellini* (*Coleoptera Lamellicornia*). Fam. *Scarabaeidae* [*Ibid.*, (25) : 1-22, 1 pl.].
- 1939, Contribution à l'étude des Coléoptères lamellicornes coprophages [*Bull. Mus. roy. Hist. nat. Belg.*, **15** (47) : 1-6, 2 figs.].
- 1939, *Coprini* (*Coleoptera Lamellicornia*). Fam. *Scarabaeidae* [*Expl. Parc Nat. Albert, Mission G. F. DE WITTE 1933-1935*, (29) : 1-104, 88 figs., 4 pl.].
- 1940, Monographie des *Scarabaeus* et genres voisins [*Mém. Mus. roy. Hist. nat. Belg.*, 2^e série, (16) : 1-81, 16 figs., 3 pl.].
- 1940, Monographie des *Gymnopleurides* (*Coleoptera Lamellicornia*) [*Ibid.*, 2^e série, (18) : 1-73, 18 figs., 2 pl.].
- 1942, Contribution à l'étude des Coléoptères lamellicornes coprophages. V : Quelques Onitides nouveaux ou peu connus [*Bull. Mus. roy. Hist. nat. Belg.*, **18** (2) : 1-9, 14 figs.].
- 1943, Contribution à l'étude des Coléoptères lamellicornes coprophages. VII : Notes sur quelques *Coprinae* d'Afrique [*Ibid.*, **19** (3) : 1-8, 3 figs.].
- 1943, Contribution à l'étude des Coléoptères lamellicornes coprophages. VIII : Revision des *Onitis* du groupe *cupreus* CASTELNAU [*Ibid.*, **19** (14) : 1-16, 8 figs.].
- 1949, Un *Scarabaeinae* termitophile nouveau du Congo belge [*Rev. Zool. Bot. Afr.*, **42** (2) : 183-184, 2 figs.].
- 1949, Contribution à l'étude des Coléoptères lamellicornes. XIII : Table synoptique et essai de classification pratique des Coléoptères *Scarabaeidae* [*Bull. Ins. roy. Sci. nat. Belg.*, **25** (15) : 1-30, 20 figs.].
- 1949, Contribution à l'étude des Coléoptères. XIV : Notes sur quelques *Scarabaeinae* nouveaux ou peu connus [*Ibid.*, **25** (43) : 1-6, 12 figs.].
- 1951, *Onitini* (*Coleoptera Lamellicornia*). Fam. *Scarabaeidae* [*Expl. Parc Nat. Upemba, Mission G. F. DE WITTE 1946-1949*, (3) : 1-41, 57 figs.].
- 1953, Contribution à l'étude des Coléoptères lamellicornes d'Afrique. I : Note sur les *Proagoderus* du Congo Belge [*Rev. Zool. Bot. Afr.*, **67** (1-2) : 65-76].
- 1953, Contribution à l'étude des Coléoptères lamellicornes d'Afrique. II : Espèces nouvelles du genre *Afroharoldius* A. JANSSENS [*Ibid.*, **47** (3-4) : 344-347, 6 figs.].
- 1953, *Oniticellini* (*Coleoptera Lamellicornia*). Fam. *Scarabaeidae* [*Expl. Parc Nat. Upemba, Mission G. F. DE WITTE 1946-1949*, (11) : 1-118, 135 figs.].
- 1953, Contribution à l'étude des Coléoptères lamellicornes d'Afrique. III : Un nouveau *Proagoderus* du Congo Belge (Col. *Scarabaeidae*) [*Rev. Zool. Bot. Afr.*, **48** (3-4) : 287-291, 10 figs.].
- 1954, Revision du genre *Milichus* PÉRINGUEY (*Coleoptera Scarabaeidae Onthophagini*) [*Ann. Mus. congo, Zool.*, **1**, *Miscell. Zool.* H. SCHOUTEDEN, 395-400].
- 1954, Contribution à l'étude des Coléoptères lamellicornes. XVII : Description d'une nouvelle et curieuse espèce d'*Onthophagus* du Parc National de l'Upemba et considérations sur l'évolution et la convergence de certains Coléoptères *Scarabaeinae* (*Volume Jubilaire Victor Van Straelen*, **2** : 971-976, 2 pl.).

- JANSSENS, A., 1956, Contribution à l'étude de la faune entomologique du Ruanda-Urundi (Mission P. BASILEWSKY 1953). *Coleoptera Scarabaeidae. Scarabaeinae* (*Ann. Mus. roy. Congo Belge*, sér. in-8°, Zool., **51** : 343-356).
- KOLBE, H. J., 1893, Uber afrikanische Mistkafer (Catharsius) (*Sitz. Ber. Ges. Naturf. Fr.*, Berlin : 131-151).
- 1897, Coleopteren (*Käfer D. O. Afrikas*, 130-153).
- LACORDAIRE, 1856, Genera des Coléoptères. III : Pectinicornes et Lamellicornes, Paris.
- LANSBERGE, 1875, Monographie des Onitides (*Ann. Soc. ent. Belg.*, **18** : 1-148).
- MÜLLER, G., 1941, Nuovi Coleotteri dell' Africa Orientale [*Atti Mus. Civ. Stor. nat. Trieste*, **14** (23) : 319-352].
- OLIVIER, G. A., 1789-1808, Entomologia, ou Histoire naturelle des Insectes Coléoptères.
- 1789-1811, Encyclopédie méthodique.
- PAULIAN, R., 1939, Trois nouveaux coprophages de Mauritanie (*Rev. fr. d'Ent.*, **6** : 13-22).
- 1945, Coléoptères Scarabéides de l'Indochine (*Faune de l'Empire Français*, 225 p.).
- PÉRINGUEY, P., 1900-1901, Catalogue of the Coleoptera of South Africa (*Trans. S. Afr. Phil. Soc.*, **12**).
- 1908, Catalogue of the Coleoptera of South Africa (*Ibid.*, **13**).
- QUEDENFELDT, 1884, Verzeichniss der von Herrn Major¹ A. D. VON MECHOW in Angola und am Quango-Strom 1878-1881 gesammelten Pectinicornen und Lamellicornen (*Berl. Ent. Zeitschr.*, **28** : 268-280).
- SAEGER, H. DE, 1954, Introduction (*Expl. Parc Nat. Garamba*, Mission H. DE SAEGER, **1** : 1-107, 61 pl., 3 maps).
- 1956, Entomologie. Renseignements éco-biologiques (*Ibid.*, **5** : 1-555).
- WATERHOUSE, C., 1888, On some Coleoptera from Eastern Equatorial Africa received from EMIN PACHA (*Proc. Zool. Soc. Lond.*, 86-87).
- 1891, New *Scarabaeidae* in the British Museum : a fifth contribution [*Ann. Mag. Nat. Hist.*, **7** (6) : 507-522].

SYSTEMATIC INDEX.

(Synonyms in roman.)

A.	Pages.		Pages.
<i>abruptus</i> D'ORBIGNY (<i>Onthophagus</i>) ...	43	<i>armicollis</i> D'ORBIGNY (<i>Onthophagus</i>) ..	43
<i>abyssinicus</i> ROTH (<i>Drepanocerus</i>) ...	35	<i>armicollis</i> D'ORBIGNY (<i>Praogoderus</i>) ..	39
<i>achates</i> OLIVIER (<i>Catharsius</i>)	25	<i>armiger</i> GILLET (<i>Copris</i>) ... 19, 50, 51, 52,	57, 58, 67
<i>adelphus</i> KOLBE (<i>Onitis</i>)	37	<i>arrowi</i> (BOUCOMONT) (<i>Liatongus</i>) ...	37
ACTINOPHORUS CREUTZER	60	<i>artuosus</i> GILLET (<i>Onitis</i>)	37
<i>aeneomicans</i> GILLET (<i>Onitis</i>)	37	<i>asbenicus</i> GILLET (<i>Chironitis</i>)	36
<i>aeneus</i> LANSBERGE (<i>Onitis</i>)	37	<i>aterrimus</i> (BOUCOMONT) (<i>Liatongus</i>) ..	34
<i>aerarius</i> HAROLD (<i>Onitis</i>)	37	ATEUCHETUS BEDEL	60
<i>aeruginosus</i> KLUG (<i>Onitis</i>)	37	ATEUCHIDAE BURMEISTER	59
<i>affinis</i> M'LEAY (<i>Gymnopleurus</i>)	62	ATEUCHIDES REICHE	59
AFROHAROLDIUS JANSSENS. 5, 11, 15		ATEUCHITES CASTELNAU	59
<i>alexis</i> KLUG (<i>Onitis</i>)	37	ATEUCHINI ERICHSON	59
<i>alienus</i> FREY (<i>Onthophagus</i>)	43	ATEUCHUS WEBER	60
ALLOGYMNOPLEURUS JANSSENS 6, 14		<i>atratus</i> GILLET (<i>Kheper</i>)	13, 52, 61
	63	<i>atrostriatus</i> D'ORBIGNY (<i>Onthophagus</i>)	43
ALLONITIS JANSSENS	10, 36	<i>augias</i> GILLET (<i>Sceliages</i>)	13
ALLOSCELINI	5, 15	<i>auratus</i> FABRICIUS (<i>Proagoderus</i>) ...	39
ALLOSCELUS BOUCOMONT	11, 15	<i>aurescens</i> BATES (<i>Anachalcos</i>) ... 16, 49, 51,	52, 52, 53, 54, 56, 58, 64
<i>alluaudi</i> (GARRETA) (<i>Allogymnopleu-</i>		<i>auspicata</i> PÉRINGUEY (<i>Coptorhina</i>) ...	17
<i>rus</i>)	14	<i>axillaris</i> BOHEMAN (<i>Onthophagus</i>) ...	43
<i>alphaeus</i> GILLET (<i>Catharsius</i>)	25	<i>azureus</i> (FABRICIUS) (<i>Garreta</i>)	14
<i>altilamina</i> D'ORBIGNY (<i>Onthophagus</i>) .	43		
<i>amabile</i> FERREIRA (<i>Copris</i>)	19	B.	
<i>ambiguous</i> KIRBY (<i>Drepanocerus</i>)	35	<i>balubanus</i> KOLBE (<i>Onthophagus</i>) ...	43
ANACHALCOS HOPE	5, 64	<i>balubanus</i> KOLBE (<i>Catharsius</i>)	26
<i>andersoni</i> BATES (<i>Heliocopris</i>) ... 31, 52, 54,		[<i>basilewskyi</i> n. sp. (<i>Copris</i>)]	19, 101
	56, 81	<i>basilewskyi</i> BALTHASAR (<i>Garreta</i>) ...	14
<i>androcles</i> JANSSENS (<i>Onitis</i>)	37	<i>basilewskyi</i> BALTHASAR (<i>Metacathar-</i>	
<i>angularis</i> D'ORBIGNY (<i>Onthophagus</i>) ..	43	<i>sius</i>)	31
<i>anterior</i> (OLIVIER) (<i>Heliocopris</i>) .. 31, 52, 54,		<i>basilobatus</i> D'ORBIGNY (<i>Diastellopal-</i>	
	56, 81	<i>pus</i>)	42
<i>anterior</i> PÉRINGUEY (<i>Heliocopris</i>) ...	83	<i>bechymei</i> JANSSENS (<i>Drepanocerus</i>) ...	35
<i>apicalis</i> FÄHRAEUS (<i>Milichus</i>)	42	<i>bequaerti</i> D'ORBIGNY (<i>Onthophagus</i>) ...	43
<i>apichirtus</i> D'ORBIGNY (<i>Onthophagus</i>).	43	<i>balubanus</i> KOLBE (<i>Onthophagus</i>)	42
<i>approximans</i> KOLBE (<i>Catharsius</i>) ...	26	<i>bicarinulatus</i> BOHEMAN (<i>Heliocopris</i>) .	83
<i>arcturus</i> GILLET (<i>Copris</i>)	19	<i>bicomifer</i> FELSCHÉ (<i>Catharsius</i>) ...	26
<i>areolatus</i> BOHEMAN (<i>Catharsius</i>) ...	95	<i>bicornutus</i> KOLBE (<i>Catharsius</i>)	26
<i>armata</i> RAFFRAY (<i>Pedaria</i>)	16		
<i>armatus</i> GORY (<i>Sisypus</i>)	15		

	Pages.
<i>bidentifrons</i> D'ORBIGNY (<i>Onthophagus</i>)	43
<i>bifidus</i> REICHE (<i>Onthophagus</i>)	43
<i>bimarginatus</i> D'ORBIGNY (<i>Onthophagus</i>)	43
<i>bisbicornis</i> D'ORBIGNY (<i>Onthophagus</i>) .	43
<i>bituber</i> D'ORBIGNY (<i>Onthophagus</i>) ...	44
<i>blanchardi</i> HAROLD (<i>Onthophagus</i>) ...	44
<i>bocandei</i> WATERHOUSE (<i>Gymnopleurus</i>)	63
<i>bovinus</i> GILLET (<i>Copris</i>)	19
<i>brevicornis</i> FELSCHÉ (<i>Catharsius</i>) .. 27,50,	51,53,54,86
[<i>brittoni</i> n. sp. (<i>Copris</i>)]	103
<i>brucei</i> REICHE (<i>Proagoderus</i>)	40
<i>burgeoni</i> BOUCOMONT (<i>Heteroclitopus</i>).	17

C.

<i>CACCOBIUS</i> THOMSON	11,42
<i>CACCOPHILUS</i> JEKEL	11,43
<i>caffer</i> GILLET var. (<i>Copris</i>) ..	76
<i>callosipennis</i> BOUCOMONT (<i>Onthophagus</i>)	44
<i>CANTHONIDES</i> ..	64
<i>CANTHONINA</i> ..	64
<i>CANTHONINAE</i>	64
<i>CANTHONINI</i>	5,16,64
<i>carbonarius</i> KLUG (<i>Onthophagus</i>) ...	44
<i>carinatus</i> (FELSCHÉ) (<i>Lophodomitis</i>) ...	36
<i>carmelita</i> FABRICIUS (<i>Copris</i>) ... 19,50,51,	52,54,68
<i>cassius</i> KOLBE (<i>Catharsius</i>) .	27
<i>castelnaui</i> (HAROLD) (<i>Heteronitis</i>) ...	36
<i>CATHARSIUS</i> HOPE .	8,25,86
<i>catta</i> FABRICIUS (<i>Onthophagus</i>) ...	44
<i>centralis</i> GILLET var. (<i>Copris</i>) ...	76
<i>centralis</i> BATES (<i>Gymnopleurus</i>)..	62
<i>ceratotherium</i> JANSSENS (<i>Proagoderus</i>)	40
<i>CHALCONOTUS</i> REICHE .	64
<i>CHIRONITIS</i> LANSBERGE ...	36
<i>chloris</i> (KLUG) (<i>Allogymnopleurus</i>) ...	15
<i>chlorophanus</i> D'ORBIGNY (<i>Onthophagus</i>)	44
<i>cinctipennis</i> QUEDENFELDT (<i>Onthophagus</i>)	44
<i>coeruleovirens</i> (KOLBE) (<i>Garreta</i>) 14,49,50,	51,62
<i>coerulescens</i> OLIVIER (<i>Gymnopleurus</i>) 13,52,	57,62
<i>collarti</i> JANSSENS (<i>Gilletellus</i>) ...	36
<i>collarti</i> JANSSENS (<i>Heteroclitopus</i>) ...	17
<i>collarti</i> (JANSSENS) (<i>Tiniocellus</i>) .	34
<i>colmanti</i> JANSSENS (<i>Gymnopleurus</i>) ...	13
<i>colmanti</i> D'ORBIGNY (<i>Proagoderus</i>) ...	40

	Pages.
<i>colossus</i> BATES (<i>Helicopris</i>) ... 31,50,51,	53,55,83
<i>cometes</i> BATES (<i>Onthophagus</i>)	44
<i>confossus</i> D'ORBIGNY (<i>Proagoderus</i>) ...	40
[<i>congolensis</i> n. sp. (<i>Catharsius</i>)] ..	106
<i>conradti</i> D'ORBIGNY (<i>Diastellopalpus</i>) .	42
<i>consobrinus</i> PÉRINGUEY (<i>Onthophagus</i>)	44
<i>contiguicornis</i> D'ORBIGNY (<i>Onthophagus</i>)	44
<i>convexus</i> BOHEMAN (<i>Anachalcos</i>) .	16
<i>COPRIDASPIDUS</i> BOUCOMONT ...	8,25
<i>COPRIDES</i>	66
<i>COPRINA</i>	7,19,66
<i>COPRINAE</i> ..	66
<i>COPRIDIDAE</i>	66
<i>COPRINAE</i> ..	59
<i>COPRINI</i>	6,16,66
<i>COPRIS</i> BURMEISTER .	98
<i>COPRIS</i> GEOFFROY	9,19,66
<i>COPTORHINA</i> HOPE	8
<i>coriaceus</i> SHIPP (<i>Helicopris</i>) ...	81
<i>coriarius</i> GILLET var. (<i>Copris</i>) ... 21,50,51,	52,58,75
<i>corniculatus</i> JANSSENS (<i>Helicopris</i>) ..	31
<i>corniculatus</i> REICHE (<i>Onthophagus</i>) ...	44
<i>coryndoni</i> SHIPP (<i>Helicopris</i>) ...	85
<i>costatus</i> D'ORBIGNY (<i>Onthophagus</i>) ...	44
<i>costatus</i> THUNBERG (<i>Sisyphus</i>) ...	15
<i>crassus</i> D'ORBIGNY (<i>Caccobius</i>) ...	42
<i>crenulatus</i> (KOLBE) (<i>Garreta</i>) ...	14
<i>cribarius</i> BOUCOMONT (<i>Caccobius</i>) ...	42
<i>criberrima</i> WATERHOUSE (<i>Pedaria</i>) 16,50,	51,53,54,55,98
<i>crispatus</i> GORY (<i>Sisyphus</i>) ..	15
<i>cryptodus</i> GILLET (<i>Onitis</i>)	37
<i>cupreovirens</i> D'ORBIGNY (<i>Onthophagus</i>)	44
<i>cupreus</i> (FABRICIUS) (<i>Anachalcos</i>) 16,49,51,	52,65
<i>cupreus</i> CASTELNAU (<i>Onitis</i>)	37
<i>cuspidatus</i> D'ORBIGNY (<i>Proagoderus</i>) .	40
<i>cyaneus</i> KOLBE (<i>Gymnopleurus</i>) .	14
<i>cylindroides</i> (D'ORBIGNY) (<i>Stiptopodius</i>)	17

D.

<i>davidi</i> JANSSENS (<i>Coptorhina</i>)	17
<i>deceptor</i> PÉRINGUEY (<i>Onitis</i>)	37
<i>decorsei</i> BOUCOMONT (<i>Pedaria</i>) 16,53,55,99	44
<i>delicatus</i> D'ORBIGNY (<i>Onthophagus</i>) ...	44
<i>DELOPLEURUS</i> ERICHSON ...	8,19
<i>denticulatus</i> D'ORBIGNY (<i>Onthophagus</i>)	44
<i>depilis</i> D'ORBIGNY (<i>Onthophagus</i>) ...	44

	Pages.		Pages.
<i>depressifrons</i> D'ORBIGNY (<i>Onthopagus</i>)	44	<i>gangeticus</i> (CASTELNAU) (<i>Scarabaeus</i>)	12, 46, 52, 60
<i>DIASTELLOPALPUS</i> LANSBERGE	11, 42	<i>garambae</i> n. sp. (<i>Catharsius</i>)	27, 88, 107
<i>dicerus</i> D'ORBIGNY (<i>Onthopagus</i>)	45	<i>GARRETA</i> JANSSENS	6, 14, 61
<i>dimidiatus</i> KLUG (<i>Tragiscus</i>)	35	<i>gazellarum</i> GILLET (<i>Copris</i>)	19, 51, 52, 53, 54, 56, 57, 69
<i>distinctus</i> JANSSENS (<i>Drepanocerus</i>)	35	<i>gemmatus</i> PÉRINGUEY (<i>Proagoderus</i>) ..	40
<i>diversipes</i> KOLBE (<i>Anachalcos</i>)	65	<i>gibbicollis</i> GERSTAECKER (<i>Catharsius</i>)	88
<i>dolosus</i> JANSSENS (<i>Heliocopris</i>)	31	<i>gibbidorsis</i> D'ORBIGNY (<i>Onthopagus</i>) .	45
<i>dracunculus</i> FERREIRA (<i>Copris</i>)	19, 52, 69	<i>gibbifrons</i> D'ORBIGNY (<i>Onthopagus</i>) ..	45
<i>DREPANOCERINA</i>	35	<i>gibbiramus</i> D'ORBIGNY (<i>Proagoderus</i>) .	40
<i>DREPANOCERUS</i> KIRBY	10, 35	<i>gibbosulus</i> D'ORBIGNY (<i>Caccobius</i>) ...	42
<i>DREPANOPLATYNUS</i> BOUCOMONT	9, 35	<i>gigas</i> (OLIVIER) (<i>Heliocopris</i>)	82
<i>duciformis</i> FERREIRA (<i>Catharsius</i>)	27	<i>GILLETELLUS</i> JANSSENS	10
<i>duvivieri</i> D'ORBIGNY (<i>Onthopagus</i>)	45	<i>gilleti</i> JANSSENS (<i>Delopleurus</i>)	19
<i>dux</i> HAROLD (<i>Catharsius</i>)	27, 53, 87	<i>gilleti</i> D'ORBIGNY (<i>Diastellopalpus</i>) ...	42
E.		<i>gilleti</i> BOUCOMONT (<i>Drepanoplatynus</i>) .	35
<i>egregius</i> KLUG (<i>Oniticeilus</i>)	33	<i>gonopygus</i> D'ORBIGNY (<i>Onthopagus</i>) .	45
<i>elgoni</i> D'ORBIGNY (<i>Proagoderus</i>)	40	<i>gorilla</i> THOMSON (<i>Catharsius</i>)	27
<i>elphenor</i> KLUG (<i>Copris</i>)	19	<i>gorilloides</i> FELSCHÉ (<i>Catharsius</i>)	27
<i>ennearthrus</i> JANSSENS (<i>Afroharoldius</i>)	15	<i>goryi</i> CASTELNAU (<i>Ateuchus</i>)	60
<i>epilamprus</i> BATES (<i>Onthopagus</i>)	45	<i>grossa</i> (THOMSON) (<i>Pseudopedaria</i>) ...	25
<i>erectinatus</i> D'ORBIGNY (<i>Onthopagus</i>) .	45	GYMNOPLEURIDES LACORDAIRE	61
<i>ertli</i> FELSCHÉ (<i>Heliocopris</i>)	84	GYMNOPLEURUS ILLIGER	6, 13, 62
<i>erythraeus</i> MÜLLER ssp. (<i>Heliocopris</i>)	81	GYMNOPLEURINAE KOLBE	61
<i>eryx</i> (FABRICIUS) (<i>Heliocopris</i>)	31	GYMNOPLEURINI	5, 13, 61
<i>eteocles</i> CASTELNAU (<i>Catharsius</i>) 27, 53, 55, 88		H.	
<i>EUONITICELLUS</i> JANSSENS	10, 33	<i>hamadryas</i> (FABRICIUS) (<i>Heliocopris</i>) .	32
<i>exclamationis</i> SHIPP (<i>Heliocopris</i>)	82	<i>hamifer</i> HAROLD (<i>Heliocopris</i>)	32
<i>extensus</i> HAROLD (<i>Proagoderus</i>)	40	<i>harpax</i> FABRICIUS (<i>Proagoderus</i>)	40
F.		<i>hopei</i> KOLBE var. (<i>Anachalcos</i>)	64
<i>fabricii</i> ROTH (<i>Onitis</i>)	37	<i>haroldi</i> KOLBE (<i>Heliocopris</i>)	32
<i>fallax</i> D'ORBIGNY (<i>Onthopagus</i>)	45	<i>helciatus</i> HAROLD (<i>Onthopagus</i>)	45
<i>fastiditus</i> PÉRINGUEY (<i>Drepanocerus</i>) .	36	HELIOCANTHARUS M'LEAY	60
<i>fastosus</i> D'ORBIGNY (<i>Proagoderus</i>)	40	HELIOCOPRIS HOPE	8, 31, 81
<i>felschei</i> KOLBE (<i>Heliocopris</i>)	32	<i>hemichalceus</i> D'ORBIGNY (<i>Onthopagus</i>)	45
<i>femoralis</i> KIRBY (<i>Pachylomera</i>)	13	<i>gus</i>)	45
<i>festivus</i> (HAROLD) (<i>Kheper</i>)	12	HETEROCLITOPUS PÉRINGUEY	7, 17
<i>finetarius</i> ROTH (<i>Onthopagus</i>)	45	HETERONITIS GILLET	11, 36
<i>flavorufus</i> D'ORBIGNY (<i>Onthopagus</i>) ..	45	<i>hirsutus</i> BOUCOMONT (<i>Saproecius</i>)	17
<i>fossidorsis</i> D'ORBIGNY (<i>Proagoderus</i>) ..	40	<i>hirtellus</i> FREY (<i>Onthopagus</i>)	45
<i>foveatus</i> FREY (<i>Onthopagus</i>)	45	<i>hulstaerti</i> BOUCOMONT (<i>Onthopagus</i>) .	46
<i>foveicollis</i> BOUCOMONT (<i>Onthopagus</i>) .	45	I.	
<i>fulgidus</i> OLIVIER (<i>Gymnopleurus</i>)	13	<i>imberbis</i> D'ORBIGNY (<i>Onthopagus</i>)	46
<i>fuliginosus</i> ROTH (<i>Caccophilus</i>)	43	<i>impressicollis</i> BOHEMAN (<i>Onthopagus</i>)	46
<i>fulvostritatus</i> D'ORBIGNY (<i>Liatoagus</i>) ..	34	<i>gus</i>)	46
<i>fumigatus</i> (BOUCOMONT) (<i>Euoniticeilus</i>)	33	<i>inaequalis</i> BOUCOMONT (<i>Milichus</i>)	42
<i>fungicola</i> D'ORBIGNY (<i>Onthopagus</i>) ..	45	<i>inconspicuis</i> FAHRAEUS (<i>Caccobius</i>) ..	42
<i>fuscatus</i> D'ORBIGNY (<i>Onthopagus</i>)	45	<i>indicus</i> MOTSCHULSKY (<i>Ateuchus</i>)	60
		<i>inhalatus</i> QUEDENFELDT (<i>Copris</i>)	19

	Pages.
<i>insidiosus</i> PÉRINGUEY (<i>Copris</i>)	20
<i>insignis</i> PÉRINGUEY (<i>Onthophagus</i>) ...	46
<i>insulanus</i> KOLBE (<i>Onitis</i>)	37
<i>integer</i> REICHE (<i>Copris</i>)	20
<i>interioris</i> KOLBE (<i>Copris</i>)	21, 49, 50, 51, 52, 53, 55, 56, 57, 58, 69
<i>intermedia</i> BOUCOMONT (<i>Pedaria</i>) ...	16
<i>intermedius</i> (REICHE) (<i>Euoniticellus</i>) .	33
<i>intermedius</i> (GILLET) (<i>Kheper</i>)	13
<i>interruptus</i> (QUEDENFELDT) (<i>Liaton-</i> <i>gus</i>)	34
<i>isidis</i> CASTELNAU (<i>Ateuchus</i>)	60
<i>isidis</i> BOHEMAN (<i>Heliocopris</i>)	81

J.

<i>jacksoni</i> WATERHOUSE (<i>Gymnopleu-</i> <i>rus</i>)	14
<i>janssensi</i> FREY (<i>Onthophagus</i>)	46
<i>japetus</i> KLUG (<i>Heliocopris</i>) ..	32, 54, 58, 83
<i>johnstoni</i> WATERHOUSE (<i>Diastellopal-</i> <i>pus</i>)	42
<i>jucundus</i> GILLET (<i>Copris</i>)	21, 49, 51, 52, 55, 56, 57, 71
<i>jugicola</i> D'ORBIGNY (<i>Onthophagus</i>) ...	46
<i>juvencus</i> KLUG (<i>Onthophagus</i>)	46

K.

<i>kassaicus</i> D'ORBIGNY (<i>Onthophagus</i>) ..	46
<i>katualensis</i> QUEDENFELDT (<i>Proago-</i> <i>derus</i>)	40
<i>kawanus</i> (JANSSENS) (<i>Euoniticellus</i>) ..	33
<i>KHEPER</i> JANSSENS	7, 12, 61
<i>kindiai</i> PAULIAN (<i>Metacatharsius</i>) ...	31
<i>kirbyi</i> KIRBY (<i>Drepanocerus</i>)	36
<i>kwiluensis</i> JANSSENS (<i>Scarabaeus</i>) ...	12

L.

<i>laevibasis</i> D'ORBIGNY (<i>Diastellopal-</i> <i>pus</i>)	42
<i>laevigatus</i> KOLBE (<i>Scarabaeus</i>) ...	60
<i>laioides</i> BOUCOMONT (<i>Copris</i>)	21
<i>laius</i> HAROLD (<i>Copris</i>)	21
<i>lallieri</i> D'ORBIGNY (<i>Proagoderus</i>) ...	40
<i>lallierianus</i> JANSSENS (<i>Proagoderus</i>) ..	40
<i>lamarcki</i> (M'LEAY) (<i>Kheper</i>)	13
<i>lamellicollis</i> QUEDENFELDT (<i>Diastello-</i> <i>palpus</i>)	42
<i>lammifer</i> GILLET (<i>Onitis</i>)	37
<i>latestriatus</i> D'ORBIGNY (<i>Onthophagus</i>) .	46
<i>leleupi</i> JANSSENS (<i>Afroharoldius</i>) ...	15
<i>lemekensis</i> ssp. <i>hamatus</i> FREY (<i>Ontho-</i> <i>phagus</i>)	46

	Pages.
<i>LIATONGUS</i> REITTER	10, 34
<i>LITOCOPRIS</i> WATERHOUSE	9, 25, 79
<i>longegranus</i> FREY (<i>Onthophagus</i>) ...	46
<i>LOPHODONITIS</i> JANSSENS	11, 36
<i>lujendae</i> BATES (<i>Proagoderus</i>)	40
<i>lunaris</i> KOLBE (<i>Ornitis</i>)	100
<i>lycophron</i> KLUG (<i>Onitis</i>)	38

M.

<i>malleolus</i> (KOLBE) (<i>Garreta</i>)	14
<i>marshalli</i> BOUCOMONT (<i>Drepanocerus</i>)	36
<i>mediofuscatus</i> D'ORBIGNY (<i>Onthopha-</i> <i>gus</i>)	46
<i>megaceratoides</i> WATERHOUSE (<i>Copris</i>) 21, 52, 56, 57, 58, 83	
<i>mesacanthus</i> HAROLD (<i>Copris</i>) 21, 52, 57, 73	
<i>METACATHARSIVS</i> PAULIAN	8, 97
<i>MILICHUS</i> PÉRINGUEY	11, 42
<i>militaris</i> (CASTELNAU) (<i>Liatongus</i>) ...	34
<i>mimus</i> JANSSENS (<i>Heliocopris</i>)	32
<i>minos</i> GILLET (<i>Heliocopris</i>)	32
<i>misellus</i> PÉRINGUEY (<i>Copris</i>)	21
<i>minax</i> D'ORBIGNY (<i>Onthophagus</i>) ...	46
<i>mniszecchianus</i> JANSSENS (<i>Onitis</i>) ...	38
<i>mixiceps</i> D'ORBIGNY (<i>Onthophagus</i>) ..	46
<i>modestus</i> JANSSENS (<i>Afroharoldius</i>) ...	15
<i>moffartsi</i> GILLET (<i>Copris</i>)	21, 50, 51, 52, 53, 55, 56, 57, 58, 75
<i>morgani</i> WATERHOUSE (<i>Copris</i>)	68
<i>molossus</i> LINNÉ (<i>Scarabaeus</i>)	86
<i>monochromus</i> D'ORBIGNY (<i>Proagode-</i> <i>rus</i>)	41
<i>monstrosus</i> FELSCHÉ (<i>Onitis</i>)	38
<i>multicornis</i> D'ORBIGNY (<i>Proagoderus</i>) .	41
<i>murrayi</i> HAROLD (<i>Diastellopalpus</i>) ...	42
<i>mutabilis</i> KOLBE (<i>Heliocopris</i>)	32
<i>muticus</i> BOHEMAN (<i>Copris</i>) ..	25, 50, 52, 53, 54, 55, 56, 57, 58, 79
<i>myrmidon</i> KOLBE (<i>Heliocopris</i>) ..	32, 53, 54, 56, 58, 84

N.

<i>naevius</i> D'ORBIGNY (<i>Onthophagus</i>) ...	46
<i>nasicornis</i> (REICHE) (<i>Euoniticellus</i>) ...	33
<i>nasutus</i> (FELSCHÉ) (<i>Allonitis</i>)	36
<i>nemestrinus</i> FABRICIVS (<i>Catharsius</i>) ..	95
<i>nemorialis</i> GILLET (<i>Onitis</i>)	38
<i>nepos</i> GILLET (<i>Copris</i>)	23
<i>nepos</i> FAIRMAIRE (<i>Scarabaeus</i>)	60
<i>neptis</i> REICHE (<i>Copris</i>)	77
<i>neptunoides</i> JANSSENS (<i>Heliocopris</i>) ...	32
<i>neptunus</i> KOLBE (<i>Catharsius</i>)	28

	Pages.		Pages.
<i>nigrocupreus</i> JANSSENS (<i>Gymnopleurus</i>)	13	<i>PEDARIA</i> CASTELNAU	7, 16, 98
<i>ninus</i> GILLET (<i>Catharsius</i>)	28, 49, 88	<i>pegesimallus</i> MARCUS (<i>Proagoderus</i>) ...	41
<i>nitens</i> (OLIVIER) var. <i>coeruleovirens</i> (KOLBE) (<i>Garreta</i>)	14	<i>peleus</i> OLIVIER (<i>Metacatharsius</i>) .	31, 51, 95
<i>nitidipennis</i> BOHEMAN (<i>Coptorhina</i>) ..	17	<i>peregrinus</i> (HAROLD) (<i>Copridaspilus</i>) .	25
O.		<i>pertubator</i> PÉRINGUEY (<i>Onitis</i>)	38
<i>obtusicornis</i> BOHEMAN (<i>Catharsius</i>) ...	89	<i>phanaeomorphus</i> JANSSENS (<i>Ontophagus</i>) 47
<i>obtusus</i> FÄHRAEUS (<i>Caccophilus</i>) .	43	<i>phidias</i> OLIVIER (<i>Catharsius</i>)	28, 53, 54, 91
<i>ocellidorsis</i> D'ORBIGNY (<i>Ontophagus</i>) .	46	<i>phylax</i> GILLET (<i>Copris</i>)	24
<i>ONITICELLINA</i>	33	<i>plicatus</i> D'ORBIGNY (<i>Ontophagus</i>) ...	47
<i>ONITICELLINI</i>	6, 33	<i>picticollis</i> GERSTAECKER (<i>Milichus</i>) ...	42
<i>ONITICELLUS</i> SERVILLE	9, 33	<i>pictisternum</i> D'ORBIGNY (<i>Ontophagus</i>) 47
<i>ONITINI</i>	6, 36, 400	<i>pictus</i> (HAUSMAN) (<i>Oniticellus</i>)	33
<i>ONITIS</i> FABRICIUS	11, 37, 400	<i>pictus</i> REITTER (<i>Ontophagus</i>)	47
<i>ONTHOPHAGINI</i>	6, 39	<i>pithecius</i> OLIVIER (<i>Copris</i>) 94
<i>ONTHOPHAGUS</i> LATREILLE ..	11, 43	<i>PINACOTARSUS</i> HAROLD	7, 17
<i>optata</i> PÉRINGUEY (<i>Coptorhina</i>) ..	17	<i>PINOTIDES</i>	98
<i>opulentus</i> D'ORBIGNY (<i>Proagoderus</i>) ..	41	<i>PINOTINA</i> 7, 16, 98
<i>orion</i> KLUG (<i>Copris</i>)	23, 52, 54, 56, 71	<i>PINOTINAE</i>	98
<i>orphanus</i> GUÉRIN (<i>Copris</i>) ..	24, 50, 52, 53, 54, 56, 57, 58, 77	<i>planaticeps</i> D'ORBIGNY (<i>Ontophagus</i>)	47
<i>orthocerus</i> THOMSON (<i>Ontophagus</i>) ...	46	<i>planatus</i> CASTELNAU (<i>Oniticellus</i>) ...	32
<i>overlaeti</i> JANSSENS (<i>Onitis</i>) ..	38	<i>platycerus</i> KLUG (<i>Catharsius</i>) 28, 53, 54, 56, 88
<i>overlaeti</i> JANSSENS (<i>Proagoderus</i>) ...	41	<i>platynotus</i> FELSCHÉ (<i>Catharsius</i>) 28
<i>overlaeti</i> BALTHASAR (<i>Copris</i>)	24	<i>pluridens</i> GILLET (<i>Copris</i>)	69
P.		<i>podicinus</i> BOUCOMONT (<i>Onitis</i>)	38
<i>pacatus</i> PÉRINGUEY (<i>Scarabaeus</i>) ...	60	<i>poggei</i> (WATERHOUSE) (<i>Scarabaeus</i>) ...	12
<i>PACHYLOMERA</i> KIRBY	7, 13	<i>polynices</i> KOLBE (<i>Catharsius</i>) 28, 50, 51, 53, 54, 55, 56, 58, 93
<i>phanaeomorphus</i> JANSSENS (<i>Ontophagus</i>) 47	<i>praedentatus</i> D'ORBIGNY (<i>Proagoderus</i>) 41
<i>pandion</i> HAROLD (<i>Catharsius</i>)	28	<i>praestans</i> PÉRINGUEY (<i>Ontophagus</i>) ..	47
<i>panoplus</i> BATES (<i>Proagoderus</i>)	41	<i>princeps</i> KOLBE (<i>Catharsius</i>)	89
<i>panthera</i> (BOUCOMONT) (<i>Tiniocellus</i>) ..	34	<i>PROAGODERUS</i> LANSBERGE	11, 39
<i>paradoxus</i> BOUCOMONT (<i>Alloscellus</i>) ..	15	<i>procerus</i> GERSTAECKER (<i>Anachalcos</i>) ..	16
<i>PARAGYMNOPLEURUS</i> SHIPP ...	61, 33	<i>prodigiosus</i> (ERICHSON) (<i>Kheper</i>) ...	13
<i>parallelus</i> RAFFRAY (<i>Drepanocerus</i>) ...	36	<i>profanus</i> BOHEMAN (<i>Ateuchus</i>)	12, 60
<i>PARAPHYTUS</i> HAROLD ..	7, 19	<i>pseudoalcyon</i> D'ORBIGNY (<i>Proagoderus</i>) 41
<i>PARATEUCHUS</i> SHIPP	60	<i>pseudobidens</i> D'ORBIGNY (<i>Ontophagus</i>) 47
<i>parcenotatus</i> D'ORBIGNY (<i>Ontophagus</i>) 46	[<i>pseudobootes</i> n. sp. (<i>Copris</i>)]	104
<i>parcepictus</i> D'ORBIGNY (<i>Ontophagus</i>)	47	<i>PSEUDOCOPRIS</i> FERREIRA	9, 25
<i>parumnotatus</i> FÄHRAEUS (<i>Ontophagus</i>) 47	<i>PSEUDOPEDARIA</i> FELSCHÉ ..	9, 25
<i>parvus</i> (KRAATZ) (<i>Euoniticellus</i>) .	33	<i>pugionatus</i> FÄHRAEUS (<i>Ontophagus</i>) .	47
<i>pauliani</i> JANSSENS (<i>Helicopris</i>) .	32	<i>punctiventris</i> WATERHOUSE (<i>Litocopris</i>) 25, 50, 52, 53, 56, 58, 80
<i>pauliani</i> FREY (<i>Ontophagus</i>)	47	<i>punctulatus</i> BOUCOMONT (<i>Heteroclitopus</i>) 17
		<i>pustulosus</i> (GERSTAECKER) (<i>Kheper</i>) ..	13
		<i>pylades</i> PÉRINGUEY (<i>Catharsius</i>) ...	94
		<i>pyramus</i> GILLET (<i>Onitis</i>)	38

Q.	Pages.
<i>quadricuspis</i> D'ORBIGNY (<i>Onthophagus</i>)	47
<i>quadrispinosus</i> D'ORBIGNY (<i>Proagoderus</i>)	41
<i>quinqueangulatus</i> JANSSENS (<i>Heliocopris</i>)	32

R.	
<i>raffray</i> HAROLD (<i>Onthophagus</i>)	47
<i>rarus</i> GUÉRIN (<i>Proagoderus</i>)	41
<i>rectestriatus</i> D'ORBIGNY (<i>Onthophagus</i>)	47
<i>rhinocerus</i> KLUG (<i>Catharsius</i>)	28
<i>rhodesianus</i> GILLET var. (<i>Onitis</i>)	38
<i>rhyncophorus</i> PÉRINGUEY (<i>Onthophagus</i>)	47
<i>reichei</i> LANSBERGE (<i>Onitis</i>)	38
<i>reticulatus</i> D'ORBIGNY (<i>Onthophagus</i>) .	47
<i>retrodentatus</i> GILLET (<i>Onitis</i>)	38
<i>ritsemæ</i> (HAROLD) (<i>Paraphytus</i>) .	19
<i>robustus</i> BOHEMAN (<i>Onitis</i>)	38, 53, 100
<i>ruandanus</i> BALTHASAR (<i>Litocopris</i>)...	25
<i>rubrocupreus</i> JANSSENS ab. (<i>Garreta</i>) .	14
<i>rufaticollis</i> D'ORBIGNY (<i>Onthophagus</i>) .	47
<i>rufonotatus</i> D'ORBIGNY (<i>Onthophagus</i>)	47
<i>rugosus</i> GORY (<i>Sisyphus</i>)	15

S.	
<i>saegeri</i> n. sp. (<i>Catharsius</i>)	30, 53, 93, 109
<i>samson</i> HAROLD (<i>Heliocopris</i>)	32, 50, 51, 53, 85
<i>SAPROECIUS</i> PÉRINGUEY	8, 17
<i>satyrus</i> KOLBE (<i>Catharsius</i>) .	30
<i>SCARABAEIDAE</i>	59
<i>SCARABAEIDES</i>	59
<i>SCARABAEINA</i> .	12, 59
<i>SCARABAEINI</i>	6, 12, 59
<i>SCARABAEUS</i> LINNÉ	7, 12, 59
<i>SCELIAGES</i> WESTWOOD	7
<i>schoutedeni</i> (BOUCOMONT) (<i>Liatongus</i>)	34
<i>schoutedeni</i> BOUCOMONT (<i>Onthophagus</i>)	48
<i>SEBASTEOS</i> WESTWOOD	60
<i>semicirculifer</i> D'ORBIGNY (<i>Onthophagus</i>)	48
<i>semicroceus</i> D'ORBIGNY (<i>Onthophagus</i>)	48
<i>semiiris</i> THOMSON (<i>Proagoderus</i>) .	41
<i>seminalum</i> KLUG (<i>Caccobius</i>)	42
<i>seminalum</i> GERSTAECKER (<i>Sisyphus</i>) .	15
<i>sericeicollis</i> BOUCOMONT (<i>Onthophagus</i>)	48
<i>sericeipennis</i> FAIRMAIRE (<i>Scarabaeus</i>)	12

	Pages.
<i>sesostris</i> WATERHOUSE (<i>Catharsius</i>) ..	30, 51, 53, 54, 55, 56, 94
<i>simpliciceps</i> D'ORBIGNY (<i>Onthophagus</i>)	48
<i>SISYPHINI</i> .	5, 15
<i>SISYPHUS</i> LATREILLE	5, 15
<i>sjöstedti</i> (FELSCH) (<i>Liatongus</i>)	35
<i>spathulatus</i> (ROTH) (<i>Liatongus</i>)	35
<i>spectabilis</i> GILLET (<i>Catharsius</i>)	31
<i>speculicollis</i> QUEDENFELDT (<i>Proagoderus</i>) 41
<i>sphinx</i> (FABRICIUS) (<i>Onitis</i>)	38
<i>spinicrus</i> FAIRMAIRE (<i>Onitis</i>)	38
<i>SPINIGYMNOPLEURUS</i> SHIPP	62
<i>spinipes</i> THUNBERG (<i>Sisyphus</i>)	15
<i>spinipes</i> (ROTH) (<i>Tiniocellus</i>)	34
<i>spinosa</i> BOUCOMONT (<i>Pedaria</i>)	16, 53, 99
<i>splendidus</i> BOUCOMONT (<i>Onthophagus</i>)	48
<i>staudingeri</i> KOLBE (<i>Heliocopris</i>)	32, 51, 53, 54, 56, 85
<i>STIPTOPODIUS</i> HAROLD	7, 17
<i>stuhlmanni</i> D'ORBIGNY (<i>Onthophagus</i>)	48
<i>subaenea</i> JANSSENS (<i>Coptorhina</i>) .	17
<i>subaeneus</i> (HAROLD) (<i>Kheper</i>)	13
<i>subaeneus</i> (HAROLD) var. <i>tratus</i> GILLET (<i>Kheper</i>)	13
<i>subcrenatus</i> KOLBE (<i>Onitis</i>) 39
<i>subdivisus</i> D'ORBIGNY (<i>Onthophagus</i>) .	48
<i>subextensus</i> KOLBE (<i>Proagoderus</i>) ...	41
<i>subocellatus</i> D'ORBIGNY (<i>Onthophagus</i>)	48
<i>sulcicollis</i> (CASTELNAU) (<i>Drepanocerus</i>)	36
<i>sulcipennis</i> FELSCH (<i>Onitis</i>)	39
<i>sulcipennis</i> D'ORBIGNY (<i>Onthophagus</i>)	48
<i>sulcipennis</i> (QUEDENFELDT) (<i>Scarabaeus</i>) 12
<i>sutiliceps</i> D'ORBIGNY (<i>Onthophagus</i>) ..	48
<i>superbus</i> D'ORBIGNY (<i>Proagoderus</i>) ...	41
<i>sylvanus</i> GILLET (<i>Heliocopris</i>)	32

T.	
<i>taurus</i> (BOUCOMONT) (<i>Liatongus</i>) ...	35
<i>taylori</i> WATERHOUSE var. <i>decorsei</i> BOUCOMONT (<i>Pedaria</i>)	16, 53, 55, 99
<i>taymansii</i> D'ORBIGNY (<i>Proagoderus</i>) ...	41
<i>tchadensis</i> BALTHASAR (<i>Metacatharsius</i>)	31
<i>testudo</i> (LANSBERGE) (<i>Liatongus</i>) ...	35
<i>tibatensis</i> (KOLBE) (<i>Euoniticellus</i>) ...	33
<i>tigrinus</i> D'ORBIGNY (<i>Onthophagus</i>) ...	48
<i>tinantæ</i> BOUCOMONT (<i>Pinacotarsus</i>) ..	17
<i>TINIOCELLUS</i> PÉRINGUEY	10, 34

	Pages.		Pages.
<i>TRAGISCUS</i> KLUG	10,35		
<i>triangulatus</i> (HAROLD) (<i>Euoniticellus</i>)	34		
<i>trianguliceps</i> D'ORBIGNY (<i>Proagoderus</i>)	41		
<i>tricornutus</i> DE GEER (<i>Catharsius</i>)	31,53,95		
<i>tridens</i> FELSCHE (<i>Copris</i>)	24		
<i>tridens</i> FABRICIUS (<i>Diastellopalpus</i>) ...	42		
<i>tridentipes</i> D'ORBIGNY (<i>Onthophagus</i>) .	48		
<i>tschoffeni</i> D'ORBIGNY (<i>Onthophagus</i>) ..	48		
<i>tubericollis</i> (FELSCHE) (<i>Pseudocopris</i>) .	25		
<i>tuberculigera</i> WATERHOUSE (<i>Pedaria</i>)	16,51, 53,99		
U.			
<i>umbratus</i> D'ORBIGNY (<i>Onthophagus</i>) ..	48		
<i>umbrinus</i> (GERSTAECKER) (<i>Allogymno-pleurus</i>) ..	15,49,50,52,54,55,56,57,63		
<i>uncinatoides</i> JANSSENS (<i>Onitis</i>) ..	39		
<i>uncinatus</i> KLUG (<i>Onitis</i>)	39		
<i>unidens</i> QUEDENFELDT (<i>Proagoderus</i>) .	41		
[<i>upembanus</i> n. sp. (<i>Catharsius</i>)] ..	31,111		
<i>upembanus</i> JANSSENS (<i>Liatongus</i>) ...	35		
<i>upembanus</i> JANSSENS (<i>Onitis</i>)	39		
<i>useramus</i> KOLBE (<i>Metacatharsius</i>) ..	31,53, 44,97		
		V.	
		<i>vanderkelleni</i> (LANSBERGE) (<i>Kheper</i>) ..	12
		<i>vanderkelleni</i> LANSBERGE (<i>Onitis</i>) ...	39
		<i>variatus</i> D'ORBIGNY (<i>Onthophagus</i>) ...	48
		<i>variogranosus</i> D'ORBIGNY (<i>Onthophagus</i>)	48
		<i>vinctoides</i> FREY (<i>Onthophagus</i>)	48
		<i>virens</i> ERICHSON (<i>Gymnopleurus</i>) ...	14
		<i>viridulus</i> BOHEMAN (<i>Onitis</i>)	39
		<i>viridimicans</i> KOLBE var. (<i>Garreta</i>) ...	14
		<i>viviensis</i> D'ORBIGNY (<i>Onthophagus</i>) ...	48
		<i>vrydaghi</i> JANSSENS (<i>Onitis</i>)	39
		[<i>vrydaghi</i> n. sp. (<i>Copris</i>)]	105
		W.	
		<i>wiesei</i> KOLBE (<i>Copris</i>)	25
		<i>wittei</i> (JANSSENS) (<i>Euoniticellus</i>)	34
		<i>wittei</i> JANSSENS (<i>Onitis</i>)	39
		<i>wittei</i> JANSSENS (<i>Pedaria</i>)	16
		Z.	
		<i>zambeziensis</i> PÉRINGUEY (<i>Onitis</i>) ...	100

CONTENTS

	Pages.
INTRODUCTION	3
CHAPTER I. — Key to the genera of <i>Coprinae</i> presented in the Congo (old Belgian Congo territory)	5
CHAPTER II. — The faunistic concentration of the <i>Coprinae</i> in the Congo (old Belgian Congo territory)	12
CHAPTER III. — A. — The faunistic concentration of the <i>Coprinae</i> in the Garamba National Park	49
B. — Scarabacids collected in the Garamba National Park by H. DE SAEGER expedition	59
CHAPTER IV. — Descriptions of new species	101
REFERENCES	112
SYSTEMATIC INDEX	116
PLATES I, II, III.	
MAPS I, II, III.	

PLATE I



Fig. 1. — « Patakali ». — Garamba National Park. (1/a/1).



Fig. 2. — Aka river. — Garamba National Park. (1/a/3').



Fig. 1. — Savanna near the forest galerie. — Garamba National Park. (1/c/1).



Fig. 2. — Bamangwa Mont (alt. 902 m). — Garamba National Park.

PLATE III



Fig. 1. — Savanna abounding with wood. — Garamba National Park. (1/o/1).



Fig. 2. — Vegetation of the Napokomweli river. — Garamba National Park. (1/o/3).