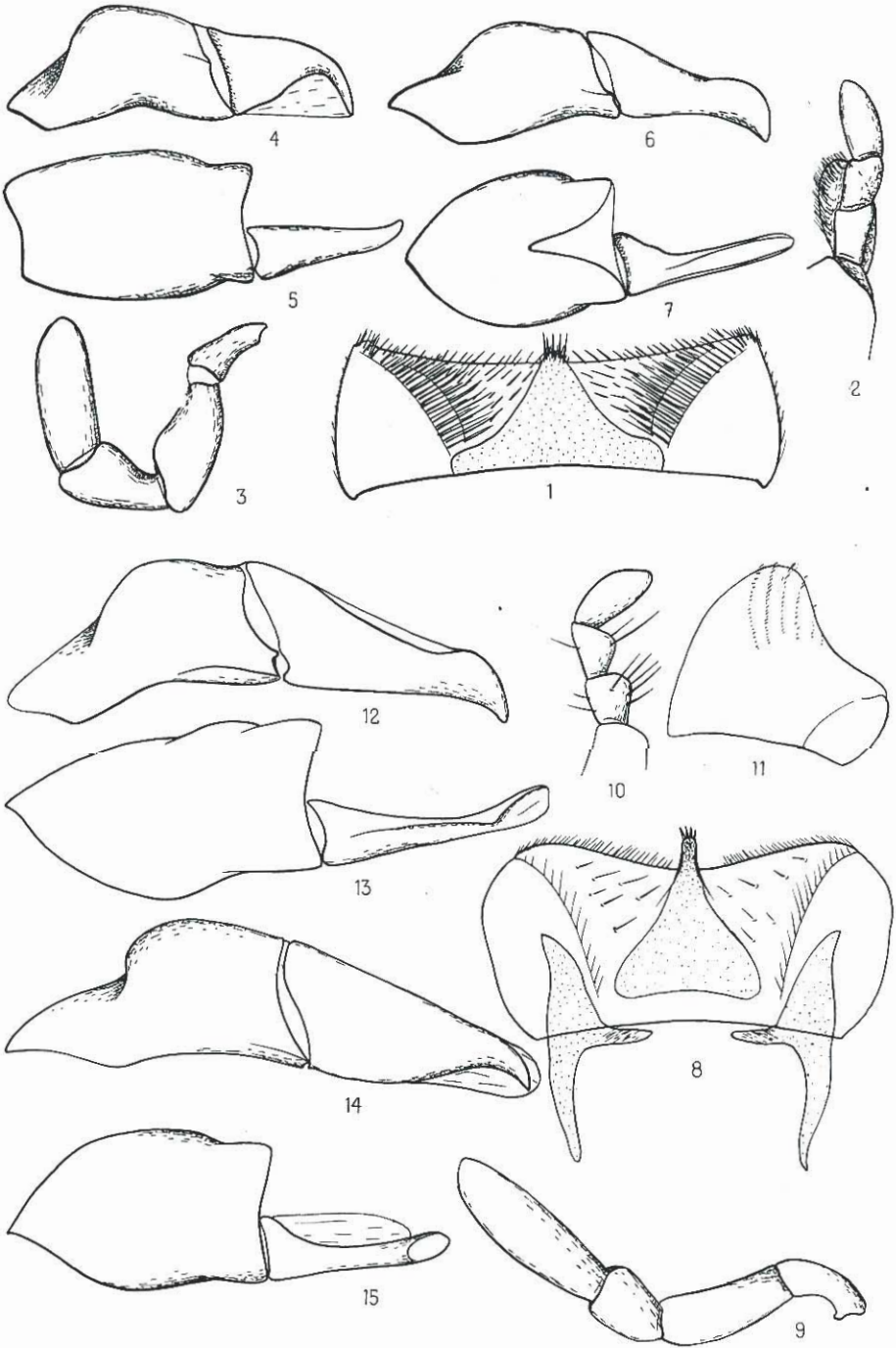


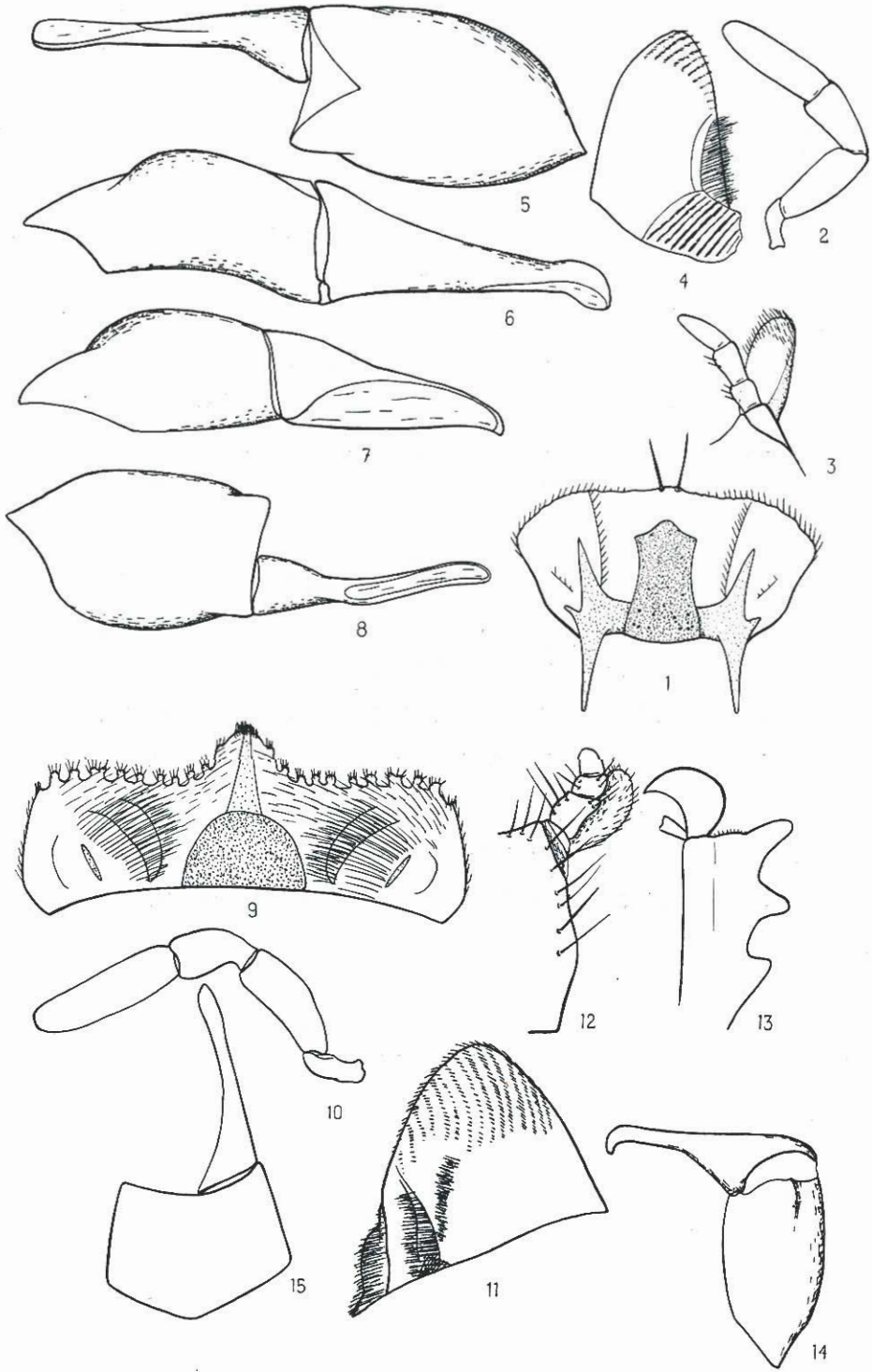
EXPLICATIONS DE LA PLANCHE I.

- FIG. 1. — *Megatelus contractus* KLUG, épipharynx.
FIG. 2. — *Megatelus contractus* KLUG, palpe labial.
FIG. 3. — *Megatelus contractus* KLUG, palpe maxillaire.
FIG. 4, 5. — *Megatelus contractus* KLUG, genitalia.
FIG. 6, 7. — *Megatelus dimidiatus* ROTH, genitalia.
FIG. 8. — *Colobopteroides latus* (SCHMIDT), épipharynx.
FIG. 9. — *Colobopteroides latus* (SCHMIDT), palpe maxillaire.
FIG. 10. — *Colobopteroides latus* (SCHMIDT), palpe labial.
FIG. 11. — *Colobopteroides latus* (SCHMIDT), mandibule.
FIG. 12, 13. — *Colobopterus senegalensis* (KLUG), genitalia.
FIG. 14, 15. — *Colobopterus maculicollis* (REICHE), genitalia.
-



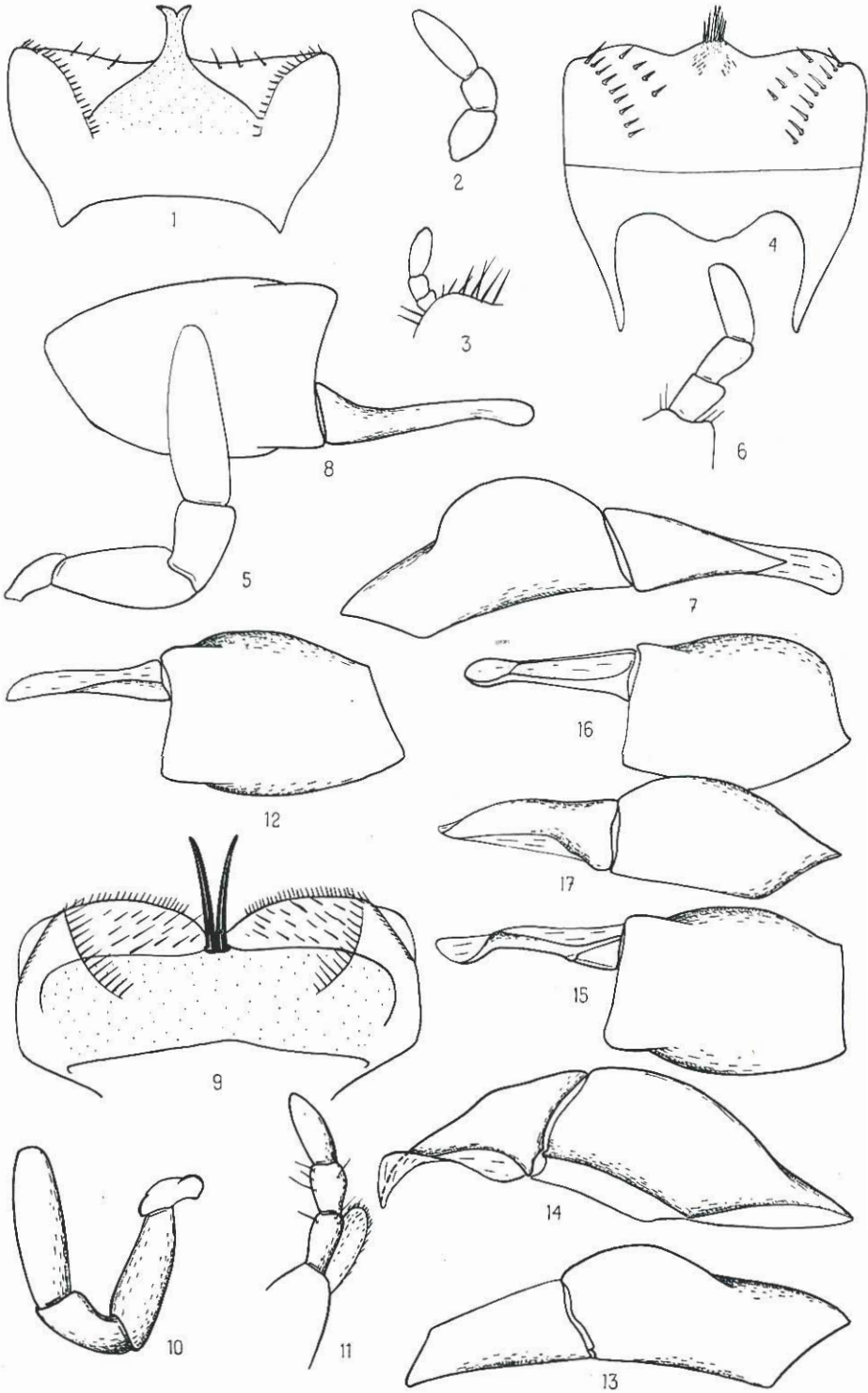
EXPLICATIONS DE LA PLANCHE II.

- FIG. 1. — *Colobopterus maculicollis* (REICHE), épipharynx.
FIG. 2. — *Colobopterus maculicollis* (REICHE), palpe maxillaire.
FIG. 3. — *Colobopterus maculicollis* (REICHE), palpe labial.
FIG. 4. — *Colobopterus maculicollis* (REICHE), mandibule.
FIG. 5, 6. — *Colobopterus principalis* (HAROLD), genitalia.
FIG. 7, 8. — *Colobopterus Ballioni* (SCHMIDI), genitalia.
FIG. 9. — *Teuchestes sorex* (FABRICIUS), épipharynx.
FIG. 10. — *Teuchestes sorex* (FABRICIUS), palpe maxillaire.
FIG. 11. — *Teuchestes sorex* (FABRICIUS), mandibule.
FIG. 12. — *Teuchestes sorex* (FABRICIUS), labium.
FIG. 13. — *Teuchestes sorex* (FABRICIUS), apex du tibia antérieur ♂.
FIG. 14, 15. — *Teuchestes sorex* (FABRICIUS), genitalia.
-



EXPLICATIONS DE LA PLANCHE III.

- FIG. 1. — *Ammoecius rugifrons* (AUBÉ), épipharynx.
FIG. 2. — *Ammoecius rugifrons* (AUBÉ), palpe maxillaire.
FIG. 3. — *Ammoecius rugifrons* (AUBÉ), palpe labial.
FIG. 4. — *Tetraclipeoides quadridentulus* (FAIRMAIRE), épipharynx.
FIG. 5. — *Tetraclipeoides quadridentulus* (FAIRMAIRE), palpe maxillaire.
FIG. 6. — *Tetraclipeoides quadridentulus* (FAIRMAIRE), palpe labial.
FIG. 7, 8. — *Tetraclipeoides quadridentulus* (FAIRMAIRE), genitalia.
FIG. 9. — *Pleuraphodius sulcipennis* (BOHEMAN), épipharynx.
FIG. 10. — *Pleuraphodius sulcipennis* (BOHEMAN), palpe maxillaire.
FIG. 11. — *Pleuraphodius sulcipennis* (BOHEMAN), palpe labial.
FIG. 12, 13. — *Pleuraphodius sulcipennis* (BOHEMAN), genitalia.
FIG. 14, 15. — *Pleuraphodius confinis* (SCHMIDT), genitalia.
FIG. 16, 17. — *Pleuraphodius Rothschildi* (SCHMIDT), genitalia.
-



EXPLICATIONS DE LA PLANCHE IV.

FIG. 1, 2. — *Pleuraphodius Chaboti* n. sp., genitalia.

FIG. 3, 4. — *Pleuraphodius gnomus* (KOSHANTSCHIKOV), genitalia.

FIG. 5, 6. — *Pleuraphodius mime* n. sp., genitalia.

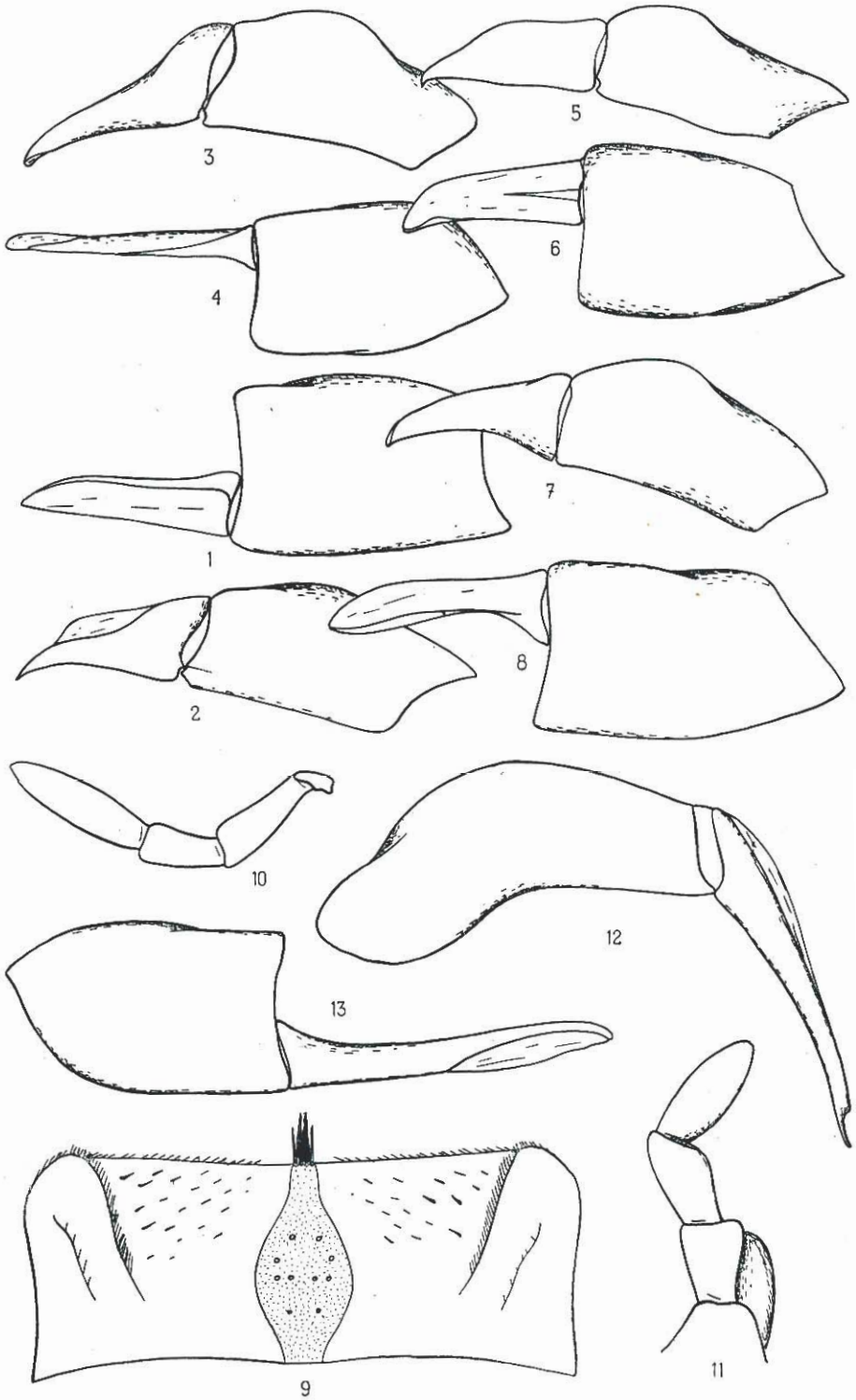
FIG. 7, 8. — *Pleuraphodius montuosus* (SCHMIDT), genitalia.

FIG. 9. — *Pharaphodius discolor* (ERICHSON), épipharynx.

FIG. 10. — *Pharaphodius discolor* (ERICHSON), palpe maxillaire.

FIG. 11. — *Pharaphodius discolor* (ERICHSON), palpe labial.

FIG. 12, 13. — *Pharaphodius discolor* (ERICHSON), genitalia.



EXPLICATIONS DE LA PLANCHE V.

FIG. 1. — *Pharaphodius desertus* (KLUG), de Zinder, genitalia (profil).

FIG. 2. — *Pharaphodius desertus* (KLUG), de Nanoropus, genitalia (face dorsale).

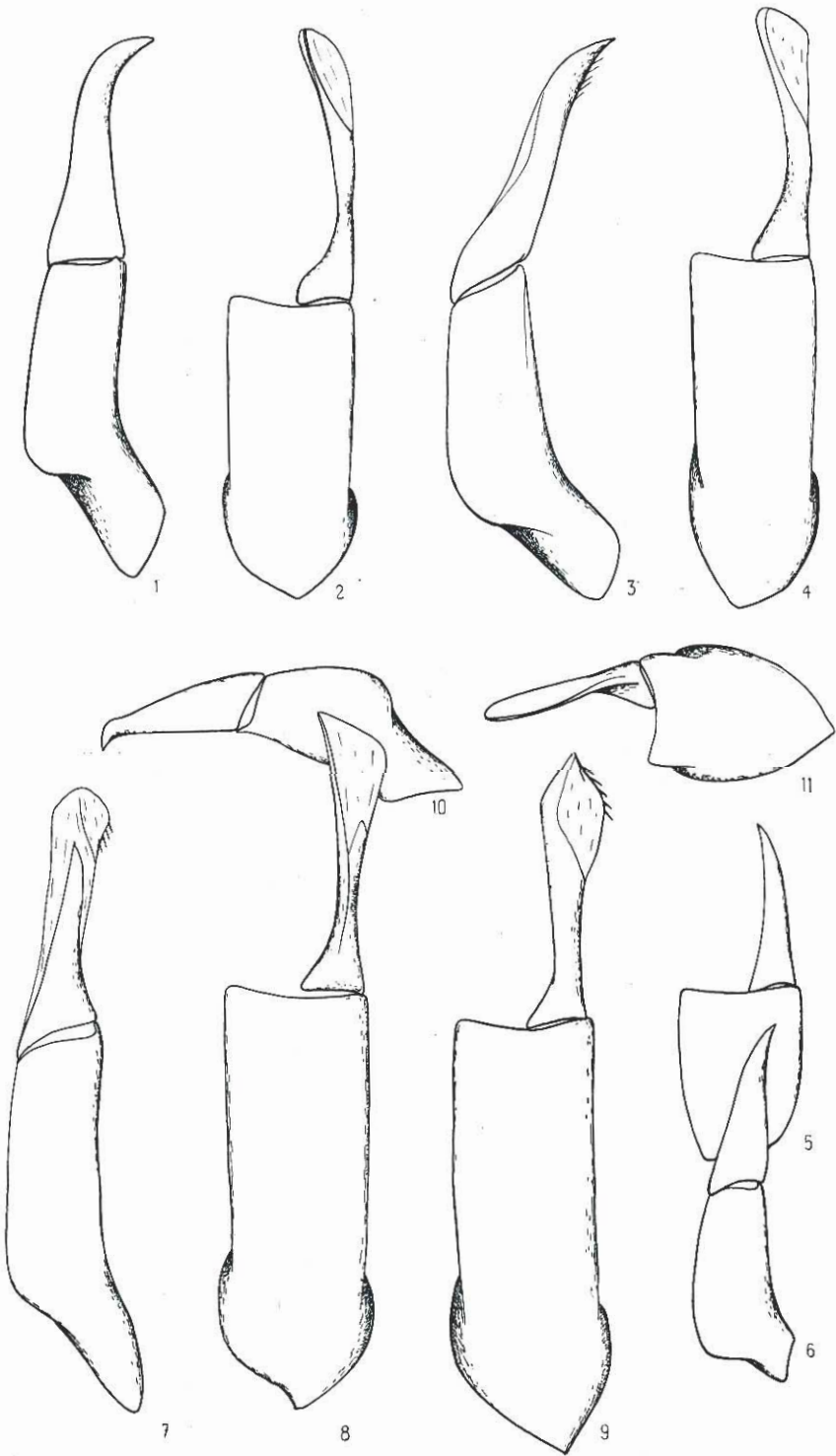
FIG. 3, 4. — *Pharaphodius pallescens* (WALKER), genitalia.

FIG. 5, 6. — *Pharaphodius anthrax* (GERSTÄCKER), genitalia.

FIG. 7, 8. — *Pharaphodius russatus* (ERICHSON), genitalia.

FIG. 9. — *Pharaphodius intercalaris* (PÉRINGUEY), genitalia.

FIG. 10, 11. — *Pharaphodius urostigmoides* (SCHMIDT), genitalia.



EXPLICATIONS DE LA PLANCHE VI.

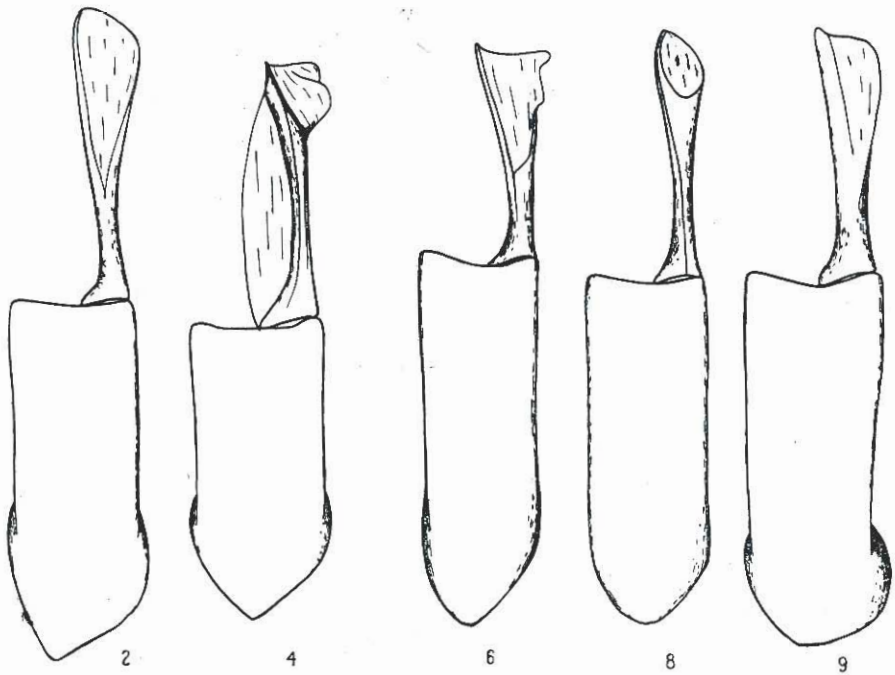
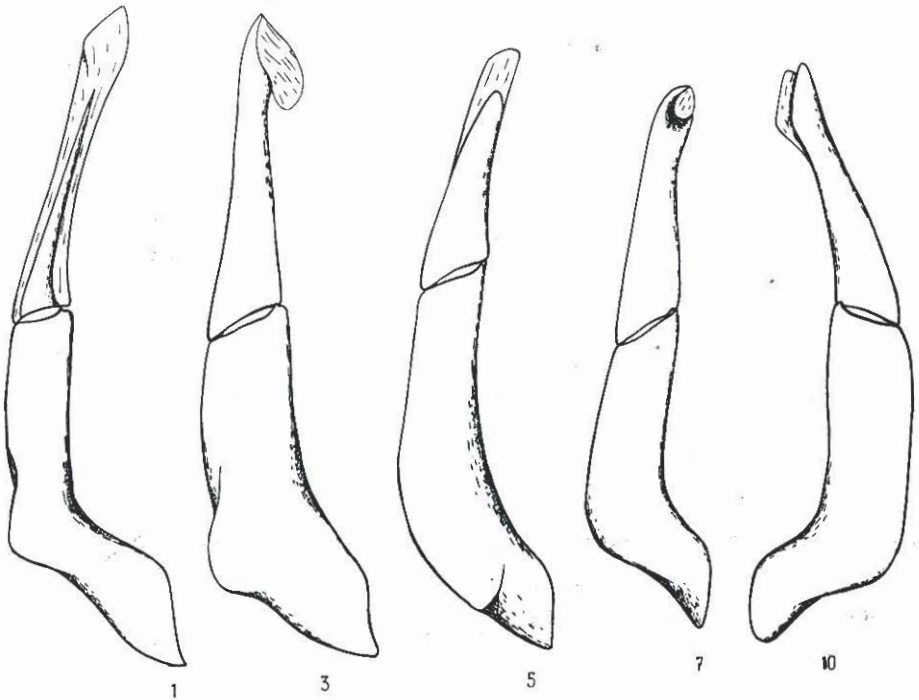
FIG. 1, 2. — *Pharaphodius curvodilatatus* (SCHMIDT), genitalia.

FIG. 3, 4. — *Pharaphodius Koshantschikovi* n. sp., genitalia.

FIG. 5, 6. — *Pharaphodius guineensis* (KLUG), genitalia.

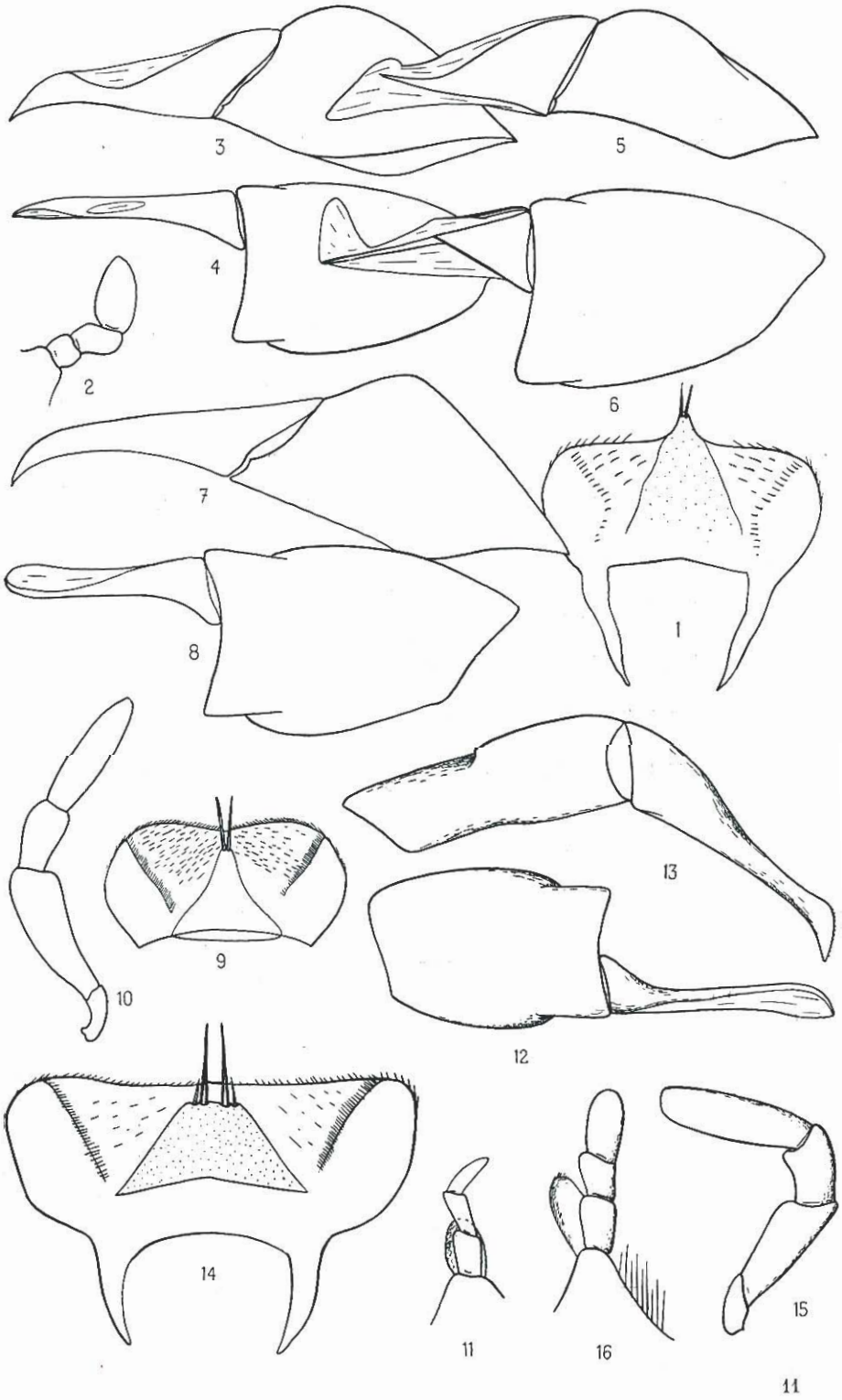
FIG. 7, 8. — *Pharaphodius impurus* (ROTH), genitalia.

FIG. 9, 10. — *Pharaphodius discoidalis* ab. *Satanas* nov., genitalia.



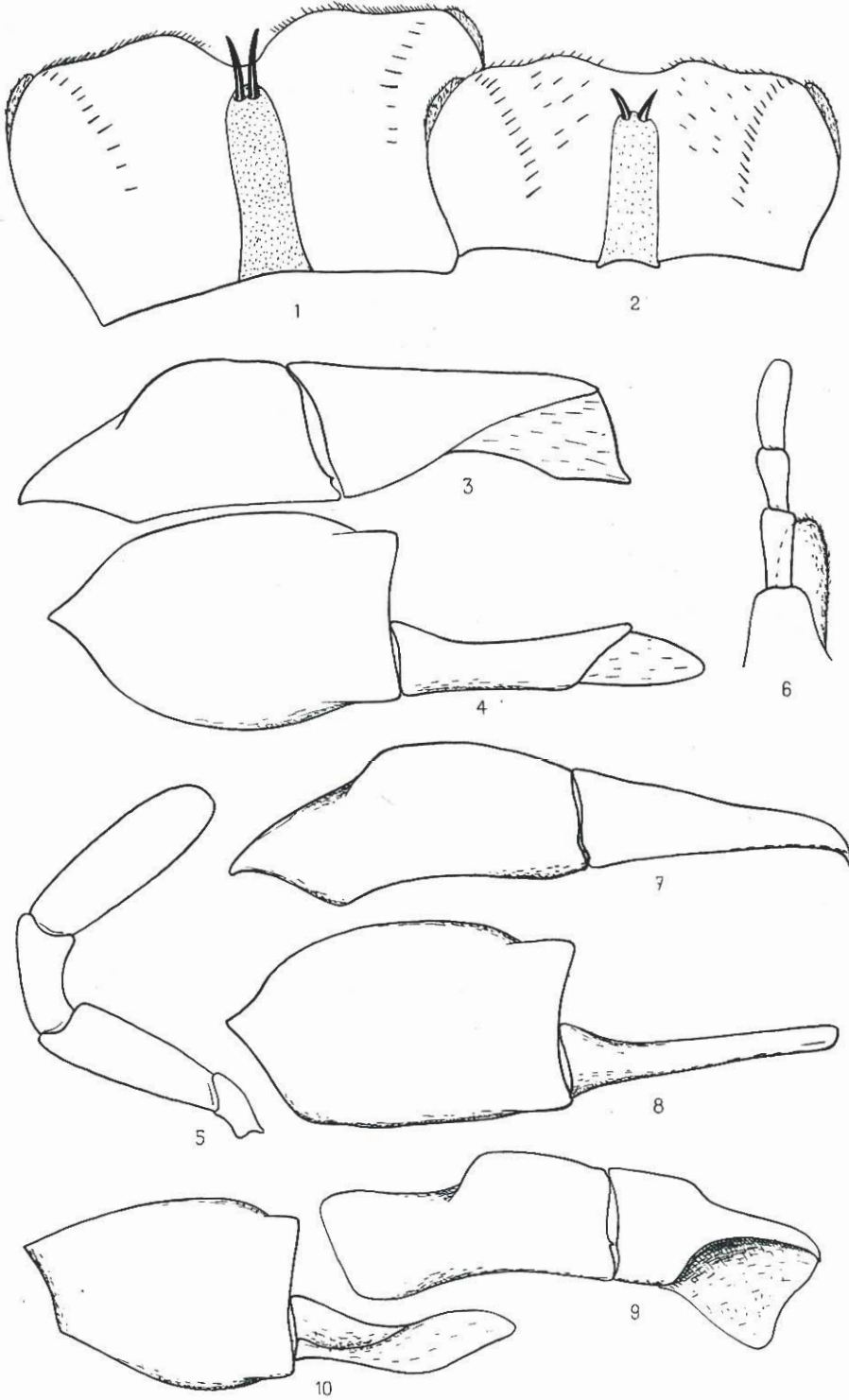
EXPLICATIONS DE LA PLANCHE VII.

- FIG. 1. — *Mendidaphodius rutilus* (KLUG), épipharynx.
FIG. 2. — *Mendidaphodius rutilus* (KLUG), palpe labial.
FIG. 3, 4. — *Mendidaphodius rutilus* (KLUG), genitalia.
FIG. 5, 6. — *Mendidaphodius biangulatus* (FAIRMAIRE), genitalia.
FIG. 7, 8. — *Mendidaphodius adustus* (KLUG), genitalia.
FIG. 9. — *Podotenoides Jeanneli* n. sp., épipharynx.
FIG. 10. — *Podotenoides Jeanneli* n. sp., palpe maxillaire.
FIG. 11. — *Podotenoides Jeanneli* n. sp., palpe labial.
FIG. 12, 13. — *Podotenoides Jeanneli* n. sp., genitalia.
FIG. 14. — *Loboparius auriculatus* (SCHMIDT), épipharynx.
FIG. 15. — *Loboparius auriculatus* (SCHMIDT), palpe maxillaire.
FIG. 16. — *Loboparius auriculatus* (SCHMIDT), palpe labial.
-



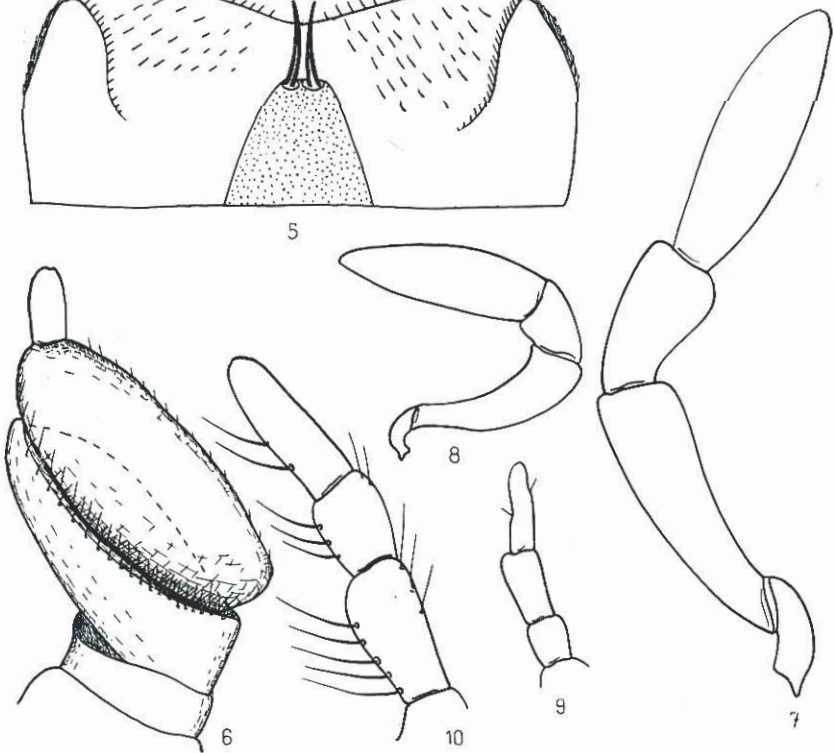
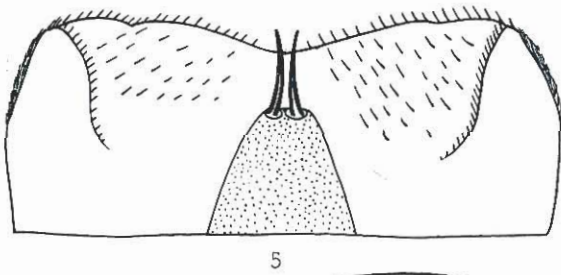
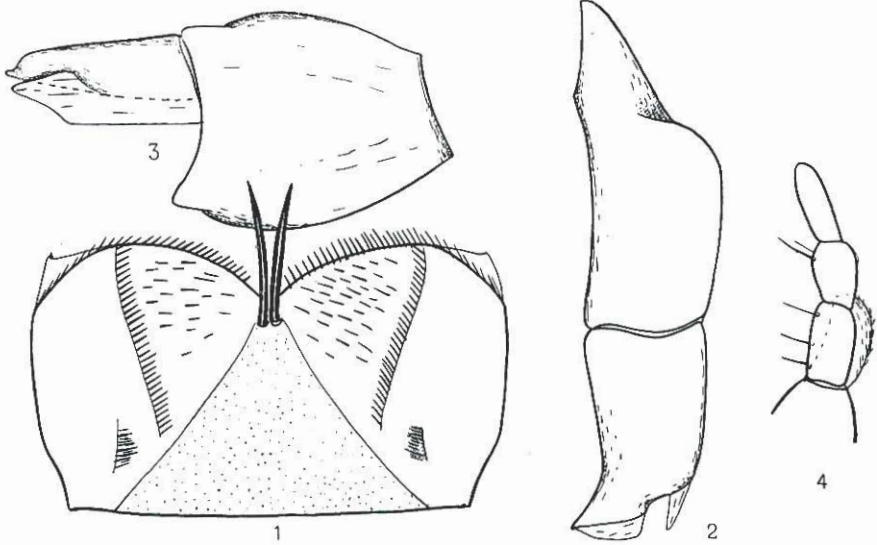
EXPLICATIONS DE LA PLANCHE VIII.

- FIG. 1. — *Aganocrossus urostigma* (HAROLD), épipharynx.
FIG. 2. — *Aganocrossus amoenus* (BOHEMAN), épipharynx.
FIG. 3, 4. — *Aganocrossus meticulosus* n. sp., genitalia.
FIG. 5. — *Aganocrossus urostigma* (HAROLD), palpe maxillaire.
FIG. 6. — *Aganocrossus urostigma* (HAROLD), palpe labial.
FIG. 7, 8. — *Aganocrossus urostigma* (HAROLD), genitalia.
FIG. 9, 10. — *Aganocrossus amoenus* (BOHEMAN), genitalia.
-



EXPLICATIONS DE LA PLANCHE IX.

- FIG. 1. — *Trichonotulus fulvescens* (HAROLD), épipharynx.
FIG. 2, 3. — *Trichonotulus fulvescens* (HAROLD), genitalia.
FIG. 4. — *Trichonotulus fulvescens* (HAROLD), palpe labial.
FIG. 5. — *Trichaphodioides calcaratus* (BOHEMAN) ♂, épipharynx.
FIG. 6. — *Trichaphodioides calcaratus* (BOHEMAN) ♂, palpe labial.
FIG. 7. — *Trichaphodioides calcaratus* (BOHEMAN) ♂, palpe maxillaire.
FIG. 8. — *Trichaphodius humilis* (ROTH) ♂, palpe maxillaire.
FIG. 9. — *Trichaphodius humilis* (ROTH) ♂, palpe labial.
FIG. 10. — *Trichaphodius hepaticolor* (QUEDENFELDT) ♂, palpe labial.
-



EXPLICATIONS DE LA PLANCHE X.

FIG. 1, 2. — *Trichaphodioides cinerascens* (KLUG), genitalia.

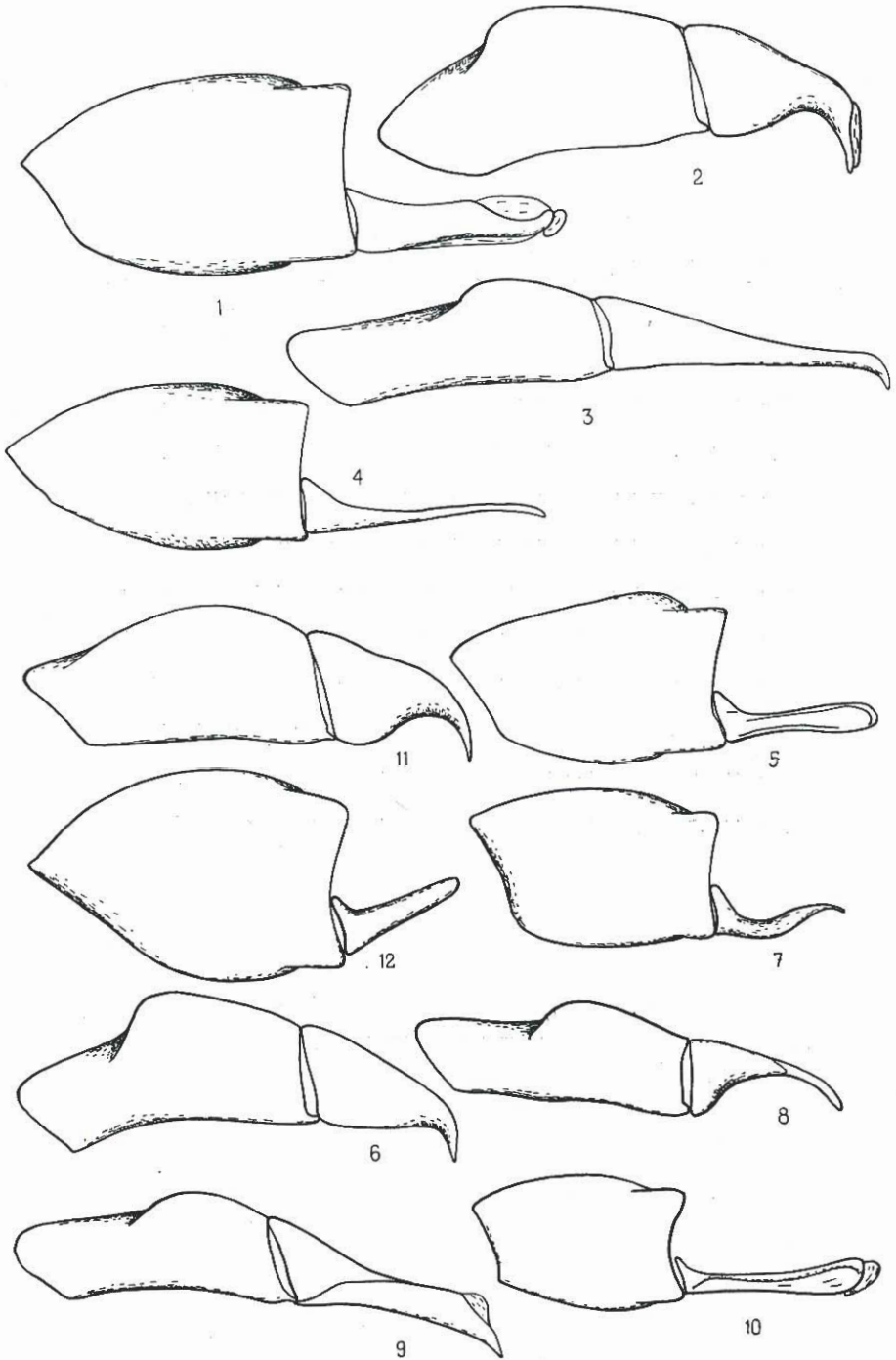
FIG. 3, 4. — *Trichaphodius Seydeli* (PAULIAN), genitalia.

FIG. 5, 6. — *Trichaphodioides calcaratus* (BOHEMAN), genitalia.

FIG. 7, 8. — *Trichaphodius humilis* (ROTH), genitalia.

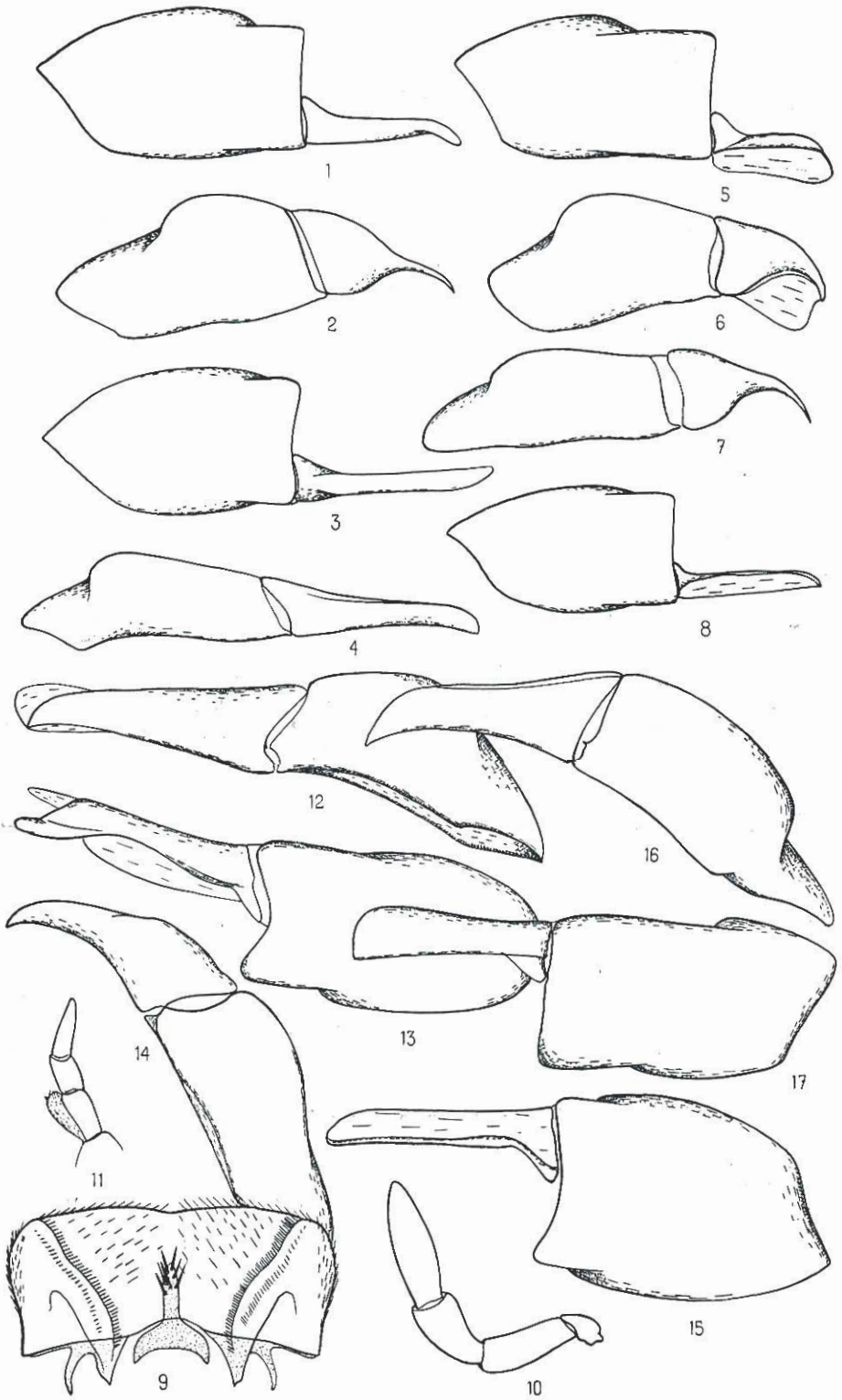
FIG. 9, 10. — *Trichaphodius Jeanneli* (PAULIAN), genitalia.

FIG. 11, 12. — *Trichaphodius hepaticolor* (QUEDENFELDT), genitalia.



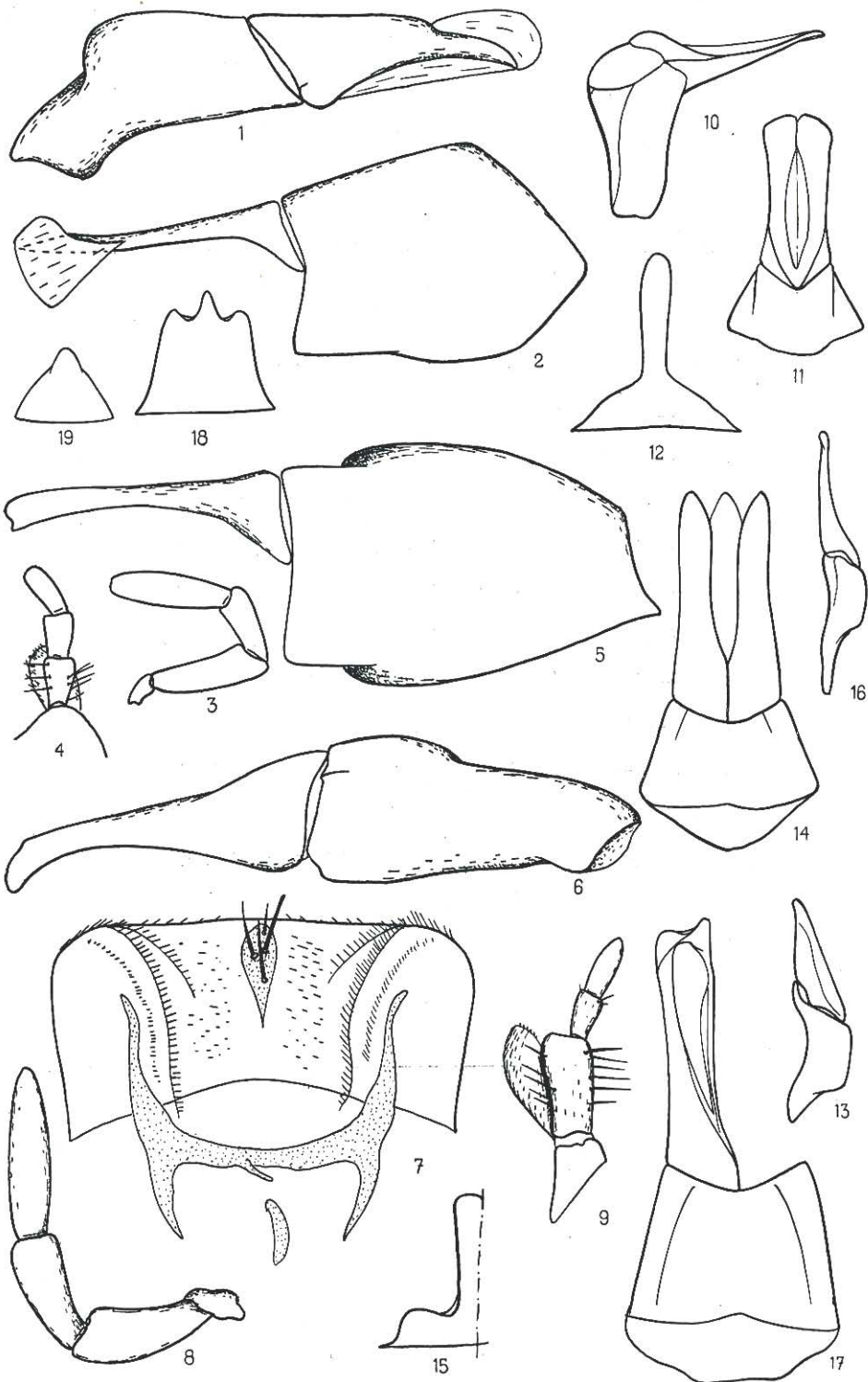
EXPLICATIONS DE LA PLANCHE XI.

- FIG. 1, 2. — *Trichaphodioides copulatus* (SCHMIDT), genitalia.
FIG. 3, 4. — *Trichaphodius foveiventris* (RAFFRAY), genitalia.
FIG. 5, 6. — *Trichaphodius calcaratoides* n. sp., genitalia.
FIG. 7, 8. — *Trichaphodius leoninus* (SCHMIDT), genitalia.
FIG. 9. — *Hemicyclium unicornutum* (SCHMIDT), épipharynx.
FIG. 10. — *Hemicyclium unicornutum* (SCHMIDT), palpe maxillaire.
FIG. 11. — *Hemicyclium unicornutum* (SCHMIDT), palpe labial.
FIG. 12, 13. — *Hemicyclium unicornutum* (SCHMIDT), genitalia.
FIG. 14, 15. — *Hemicyclium planatum* (SCHMIDT), genitalia.
FIG. 16, 17. — *Hemicyclium emeritum* (PÉRINGUEY), genitalia.
-



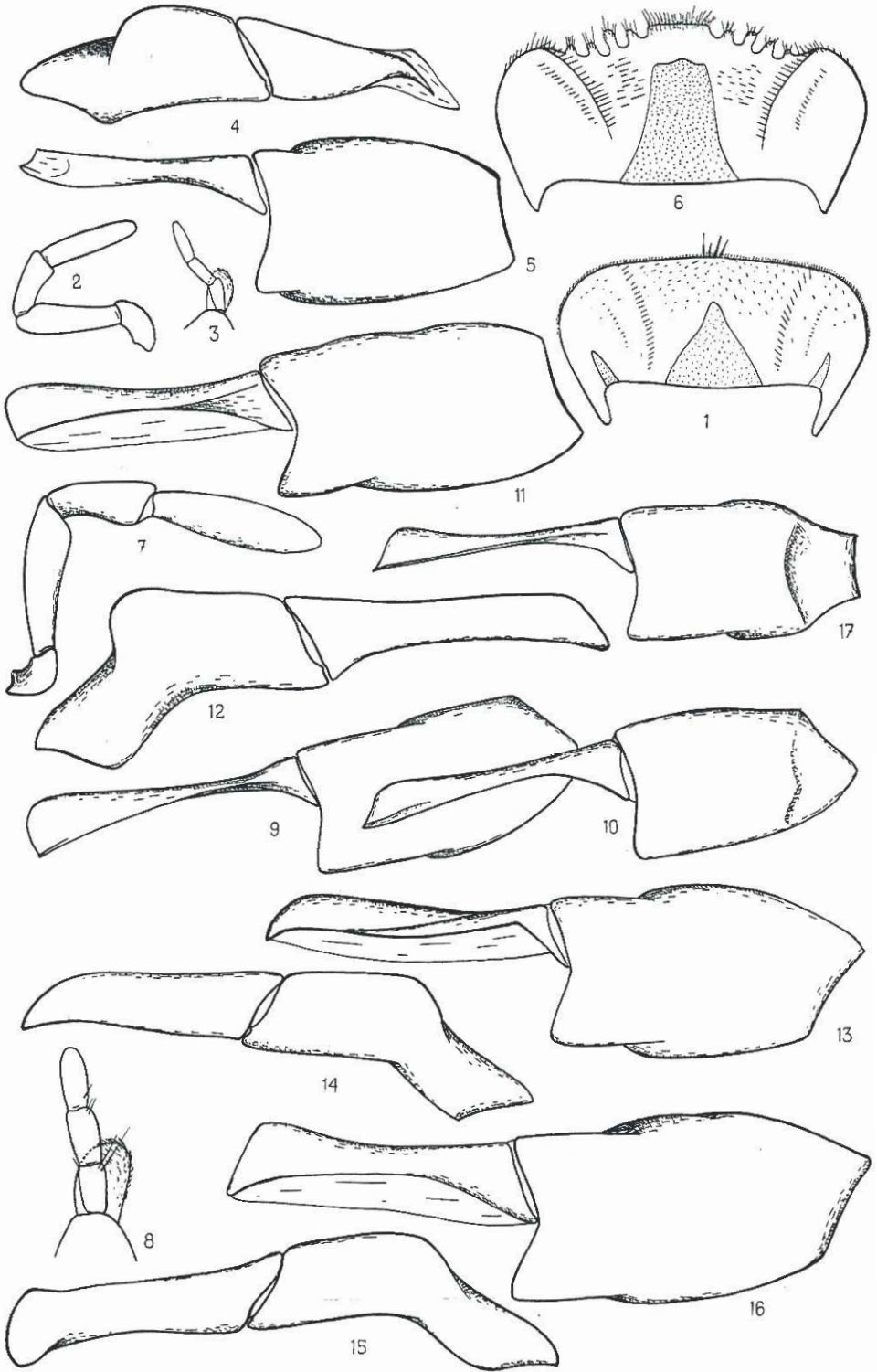
EXPLICATIONS DE LA PLANCHE XII.

- FIG. 1, 2. — *Hemicyclium lateritium* (ROTH), genitalia.
- FIG. 3. — *Alocoderus procerus* (HAROLD), palpe maxillaire.
- FIG. 4. — *Alocoderus procerus* (HAROLD), palpe labial.
- FIG. 5, 6. — *Alocoderus procerus* (HAROLD), genitalia.
- FIG. 7. — *Craterocyphus rhinocerus* (REICHE), épipharynx.
- FIG. 8. — *Craterocyphus rhinocerus* (REICHE), palpe maxillaire.
- FIG. 9. — *Craterocyphus rhinocerus* (REICHE), palpe labial.
- FIG. 10, 11. — *Craterocyphus rhinocerus* (REICHE), genitalia.
- FIG. 12. — *Craterocyphus rhinocerus* (REICHE), corne céphalique du ♂, vue de face.
- FIG. 13, 14. — *Craterocyphus mirus* (SCHMIDT), genitalia.
- FIG. 15. — *Craterocyphus mirus* (SCHMIDT), corne céphalique du ♂, vue de face.
- FIG. 16, 17. — *Craterocyphus illustris* (SCHMIDT), genitalia.
- FIG. 18. — *Craterocyphus illustris* (SCHMIDT), ♂ major, corne céphalique vue de face.
- FIG. 19. — *Craterocyphus illustris* (SCHMIDT), ♂ minor, corne céphalique vue de face.
-



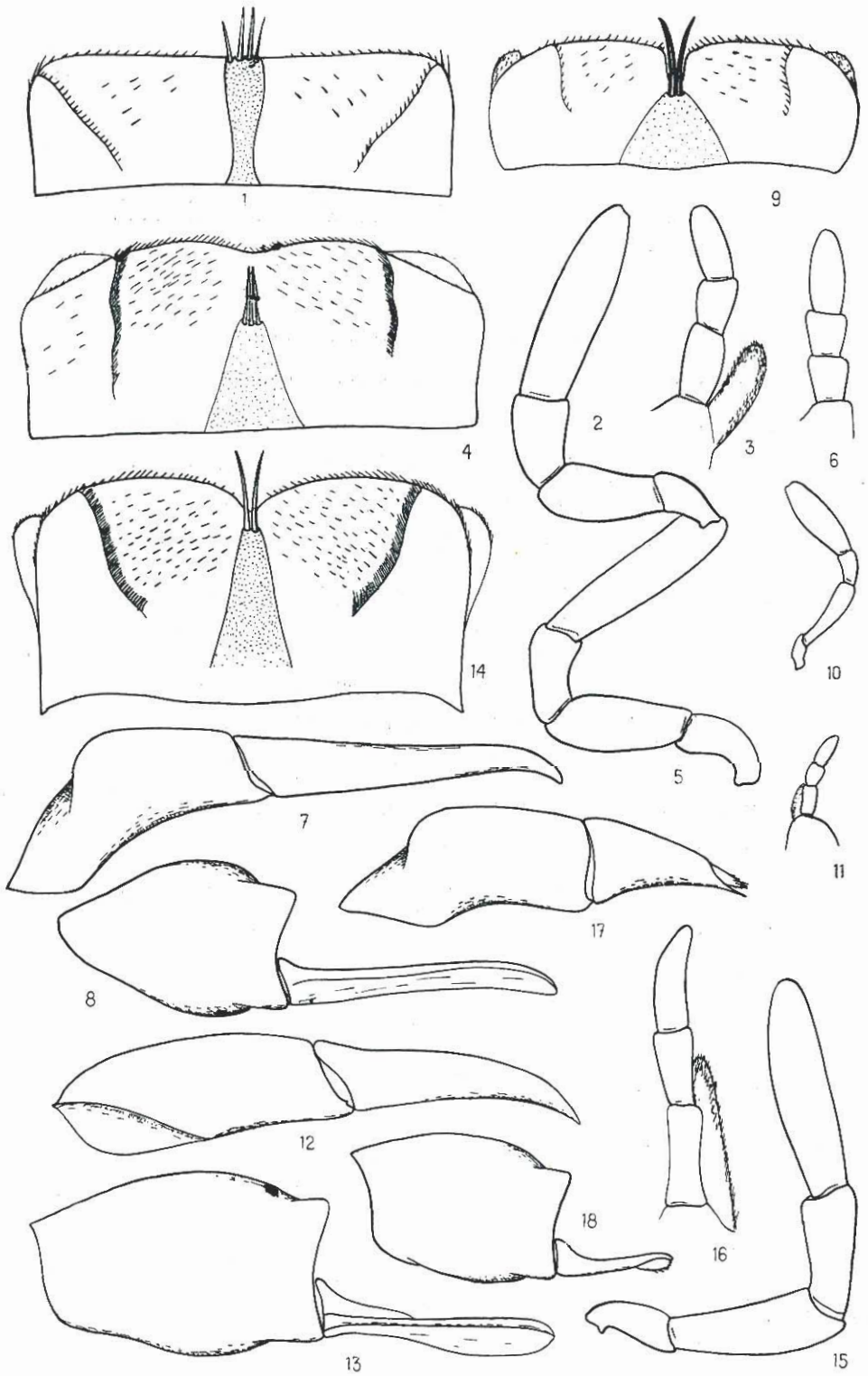
EXPLICATIONS DE LA PLANCHE XIII.

- FIG. 1. — *Calaphodius moestus* (FABRICIUS), épipharynx.
FIG. 2. — *Calaphodius moestus* (FABRICIUS), palpe maxillaire.
FIG. 3. — *Calaphodius moestus* (FABRICIUS), palpe labial.
FIG. 4, 5. — *Calaphodius moestus* (FABRICIUS), genitalia.
FIG. 6. — *Adeloparius pulcherrimus* (REICHE), épipharynx.
FIG. 7. — *Adeloparius pulcherrimus* (REICHE), palpe maxillaire.
FIG. 8. — *Adeloparius pulcherrimus* (REICHE), palpe labial.
FIG. 9. — *Adeloparius Wittei* n. sp., genitalia.
FIG. 10. — *Adeloparius crassus* n. sp., genitalia.
FIG. 11, 12. — *Adeloparius Wahlbergi* (BOHEMAN), genitalia.
FIG. 13, 14. — *Adeloparius pulcherrimus* (REICHE), genitalia.
FIG. 15, 16. — *Adeloparius circumdatus* (KLUG), genitalia.
-



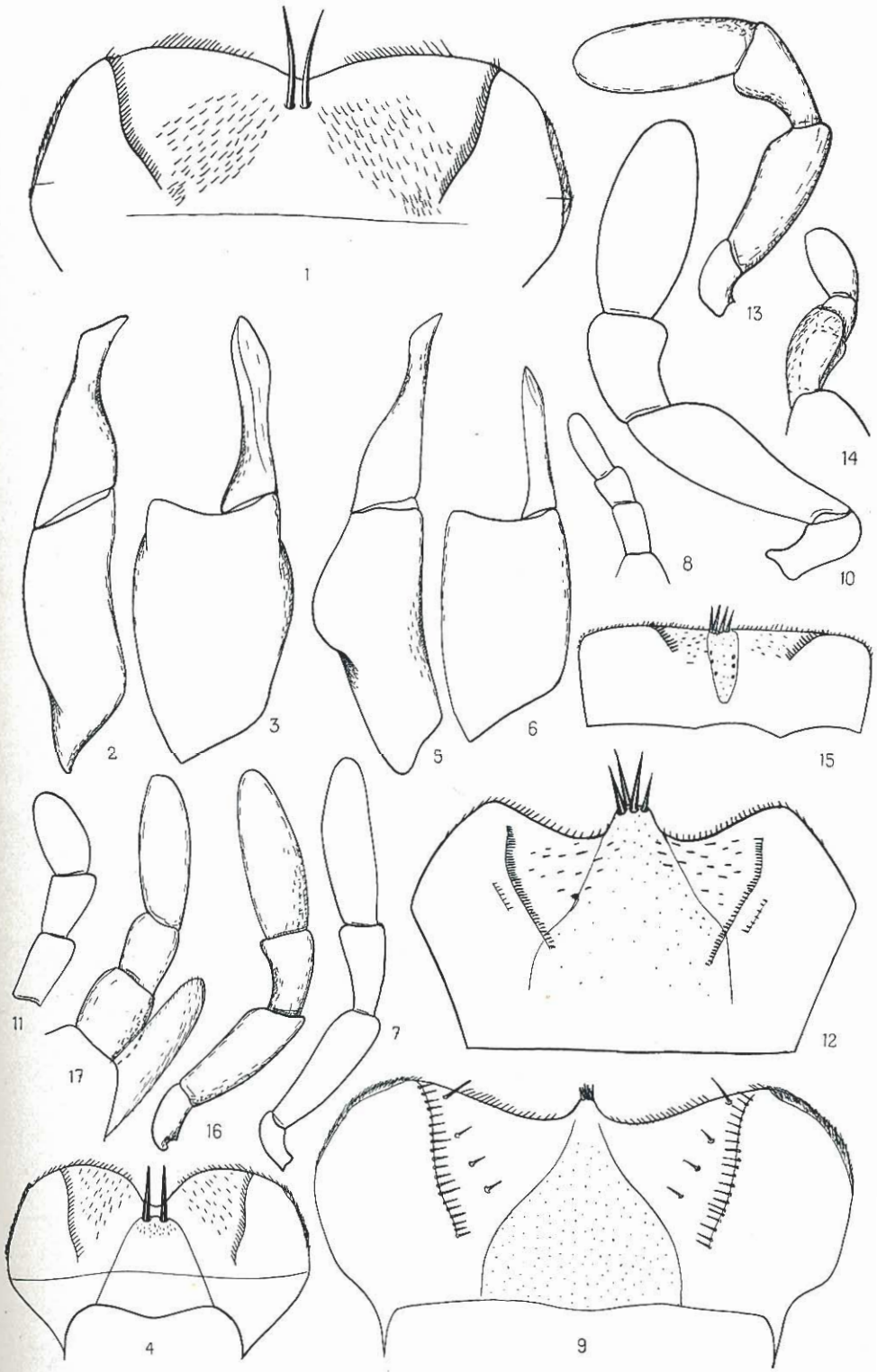
EXPLICATIONS DE LA PLANCHE XIV.

- FIG. 1. — *Erytus brunneus* (THUNBERG), épipharynx.
FIG. 2. — *Erytus brunneus* (THUNBERG), palpe maxillaire.
FIG. 3. — *Erytus brunneus* (THUNBERG), palpe labial.
FIG. 4. — *Phaeaphodius cavatus* (BOUCOMONT), épipharynx.
FIG. 5. — *Phaeaphodius cavatus* (BOUCOMONT), palpe maxillaire.
FIG. 6. — *Phaeaphodius cavatus* (BOUCOMONT), palpe labial.
FIG. 7, 8. — *Phaeaphodius cavatus* (BOUCOMONT), genitalia.
FIG. 9. — *Gonaphodiellus fastigatus* (SCHMIDT), épipharynx.
FIG. 10. — *Gonaphodiellus fastigatus* (SCHMIDT), palpe maxillaire.
FIG. 11. — *Gonaphodiellus fastigatus* (SCHMIDT), palpe labial.
FIG. 12, 13. — *Gonaphodiellus fastigatus* (SCHMIDT), genitalia.
FIG. 14. — *Emadiellus cruentus* (KLUG), épipharynx.
FIG. 15. — *Emadiellus cruentus* (KLUG), palpe maxillaire.
FIG. 16. — *Emadiellus cruentus* (KLUG), palpe labial.
FIG. 17, 18. — *Emadiellus cruentus* (KLUG), genitalia.
-



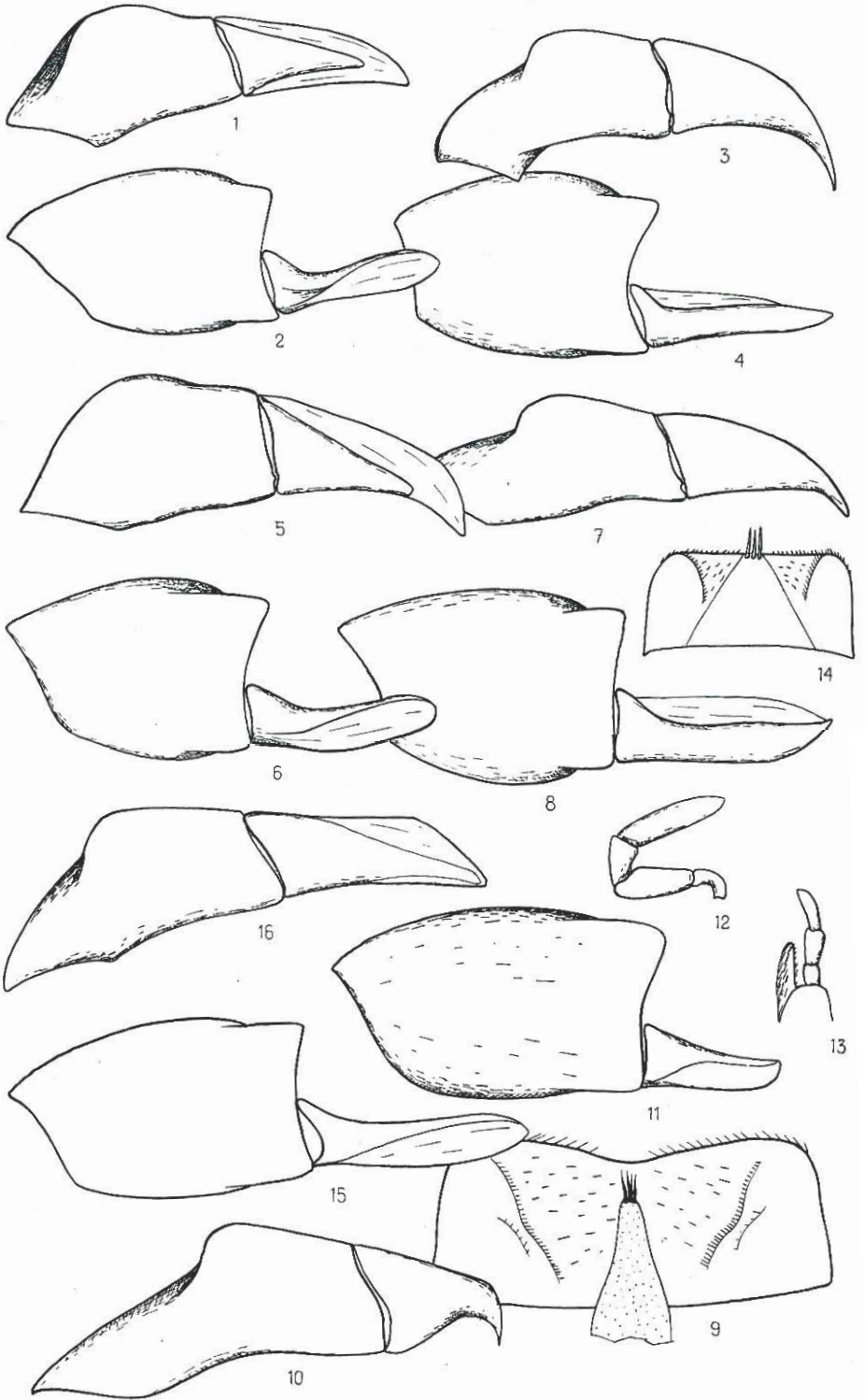
EXPLICATIONS DE LA PLANCHE XV.

- FIG. 1. — *Blackburneus levis* (SCHMIDT), épipharynx.
FIG. 2, 3. — *Blackburneus levis* (SCHMIDT), genitalia.
FIG. 4. — *Koshantschikovius haematicus* (BOHEMAN), épipharynx.
FIG. 5, 6. — *Koshantschikovius haematicus* (BOHEMAN), genitalia.
FIG. 7. — *Koshantschikovius haematicus* (BOHEMAN), palpe maxillaire.
FIG. 8. — *Koshantschikovius haematicus* (BOHEMAN), palpe labial.
FIG. 9. — *Loraphodius suarius* (FALDERMAN), épipharynx.
FIG. 10. — *Loraphodius suarius* (FALDERMAN), palpe maxillaire.
FIG. 11. — *Loraphodius suarius* (FALDERMAN), palpe labial.
FIG. 12. — *Esymus merdarius* (FABRICIUS), épipharynx.
FIG. 13. — *Esymus merdarius* (FABRICIUS), palpe maxillaire.
FIG. 14. — *Esymus merdarius* (FABRICIUS), palpe labial.
FIG. 15. — *Mesontoplatys dorsalis* (KLUG), épipharynx.
FIG. 16. — *Mesontoplatys dorsalis* (KLUG), palpe maxillaire.
FIG. 17. — *Mesontoplatys dorsalis* (KLUG), palpe labial.
-



EXPLICATIONS DE LA PLANCHE XVI.

- FIG. 1, 2. — *Mesontoplatys dorsalis* (Klug), genitalia.
FIG. 3, 4. — *Mesontoplatys triangularis* (Schmidt), genitalia.
FIG. 5, 6. — *Mesontoplatys effetus* (Kolbe), genitalia.
FIG. 7, 8. — *Mesontoplatys latecinctus* (Fairmaire), genitalia.
FIG. 9. — *Orodalus sinuaticeps* (Boucomont), épipharynx.
FIG. 10, 11. — *Orodalus sinuaticeps* (Boucomont), genitalia.
FIG. 12. — *Orodalus sinuaticeps* (Boucomont), palpe maxillaire.
FIG. 13. — *Orodalus sinuaticeps* (Boucomont), palpe labial.
FIG. 14. — *Orodalus parvulus* (Harold), épipharynx.
FIG. 15, 16. — *Orodalus parvulus* (Harold), genitalia.
-



EXPLICATIONS DE LA PLANCHE XVII.

FIG. 1. — *Nobius bicoloratus* (SCHMIDT), épipharynx.

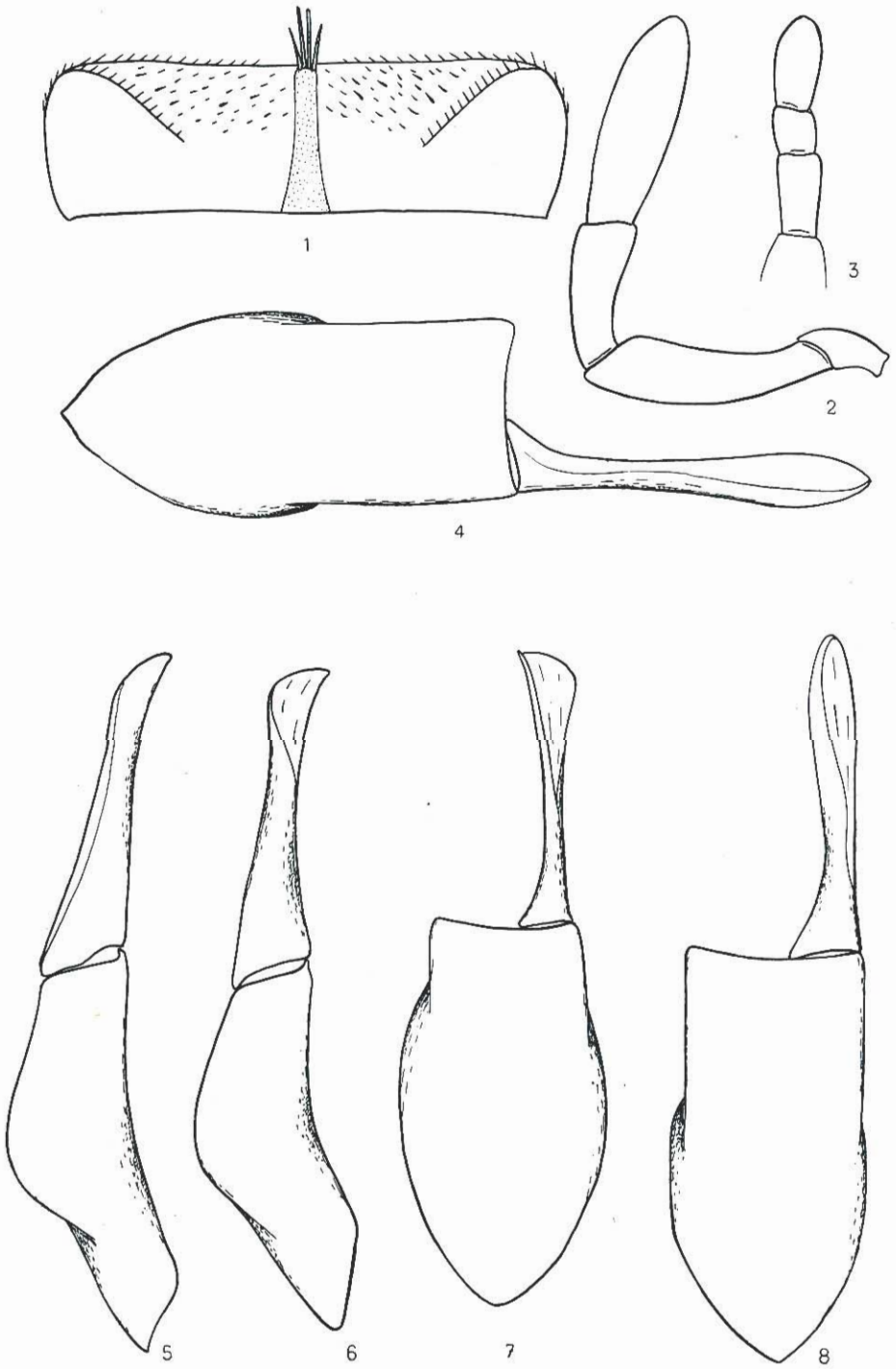
FIG. 2. — *Nobius bicoloratus* (SCHMIDT), palpe maxillaire.

FIG. 3. — *Nobius bicoloratus* (SCHMIDT), palpe labial.

FIG. 4, 5. — *Nobius bicoloratus* (SCHMIDT), genitalia.

FIG. 6, 7. — *Nobius Peringueyi* (SCHMIDT), genitalia.

FIG. 8. — *Nobius hepaticus* (ROTH), genitalia.



EXPLICATIONS DE LA PLANCHE XVIII.

FIG. 1, 2. — *Bodilus ardens* (HAROLD), genitalia.

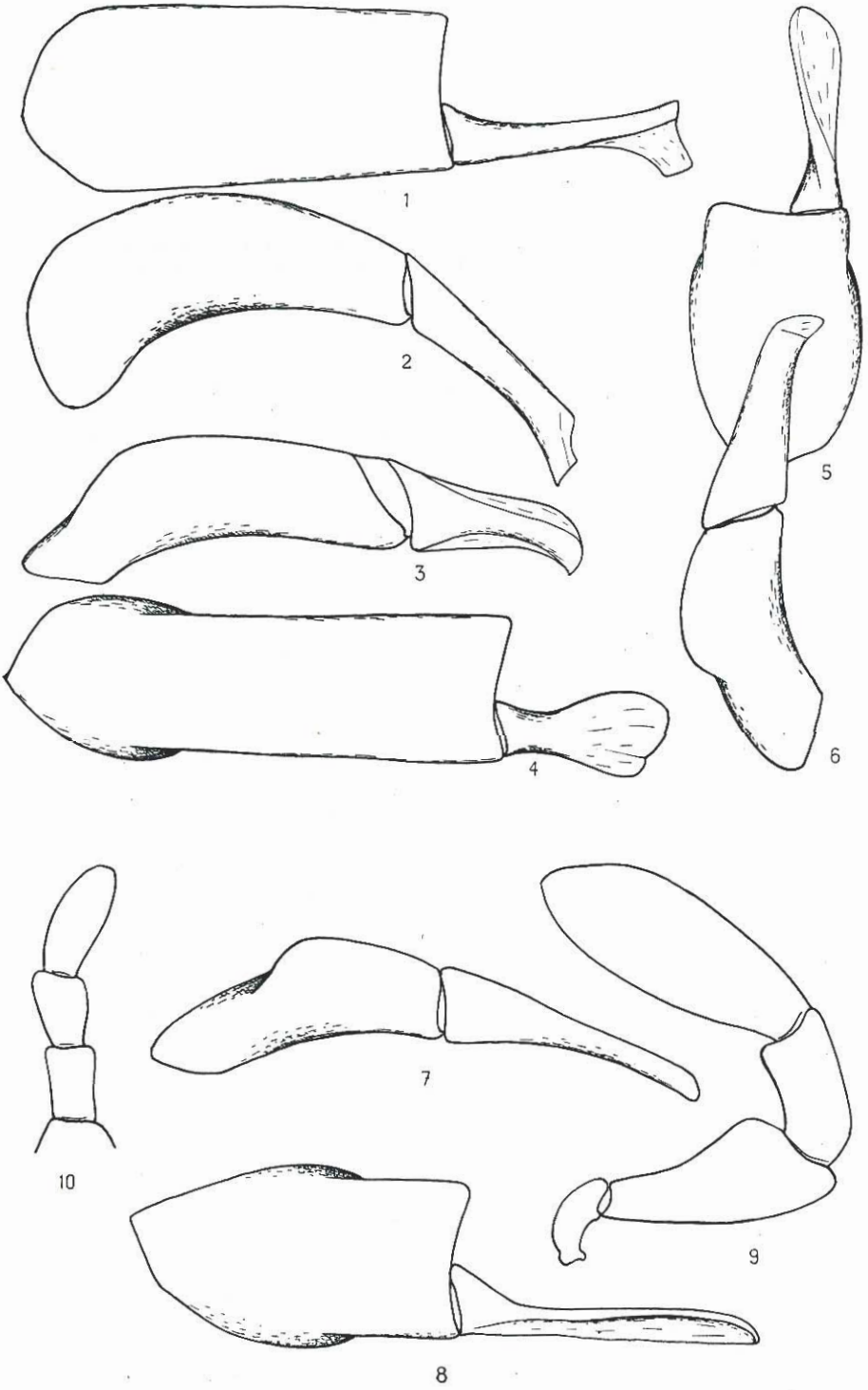
FIG. 3, 4. — *Bodilus strigilatus* (ROTH), genitalia.

FIG. 5, 6. — *Bodilus flagrans* (ERICHSON), genitalia.

FIG. 7, 8. — *Pseudacrossus binodulus* (HAROLD), genitalia.

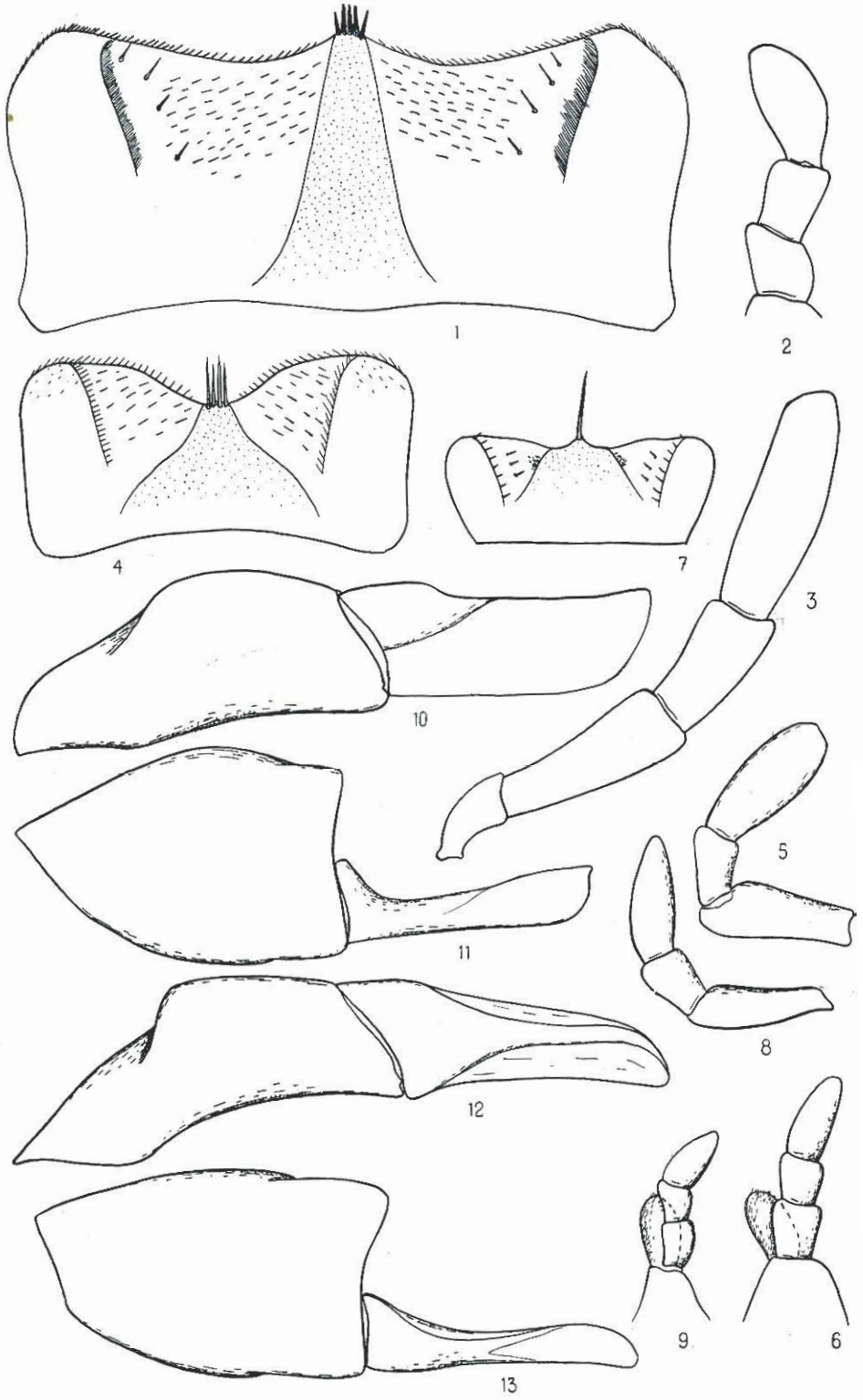
FIG. 9. — *Pseudacrossus binodulus* (HAROLD), palpe maxillaire.

FIG. 10. — *Pseudacrossus binodulus* (HAROLD), palpe labial.



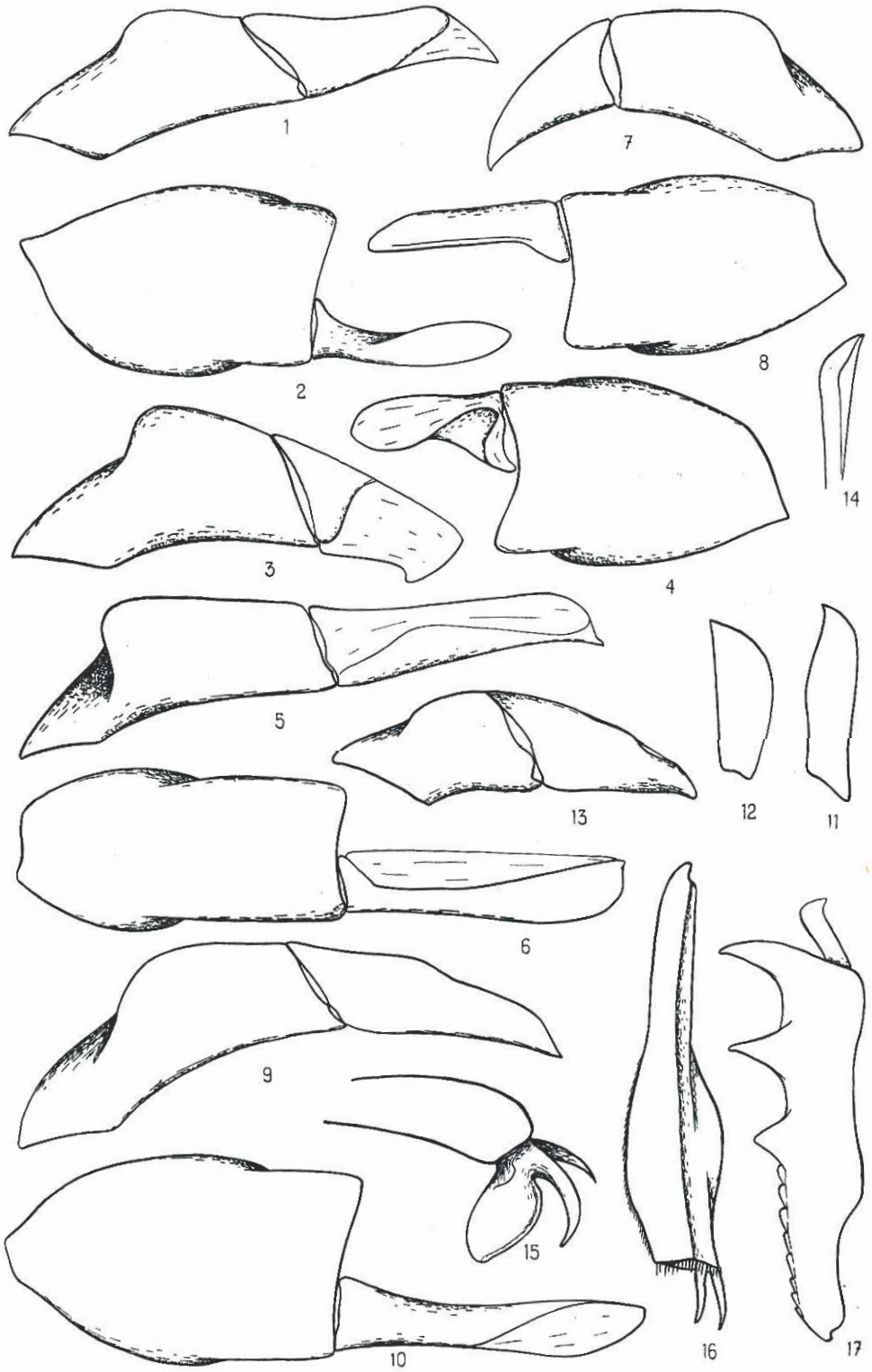
EXPLICATIONS DE LA PLANCHE XIX.

- FIG. 1. — *Amidorus porcus* (FABRICIUS), épipharynx.
FIG. 2. — *Amidorus porcus* (FABRICIUS), palpe labial.
FIG. 3. — *Amidorus porcus* (FABRICIUS), palpe maxillaire.
FIG. 4. — *Nialus lividus* (OLIVIER), épipharynx.
FIG. 5. — *Nialus lividus* (OLIVIER), palpe maxillaire.
FIG. 6. — *Nialus lividus* (OLIVIER), palpe labial.
FIG. 7. — *Nialus feculentus* (FAIRMAIRE), épipharynx.
FIG. 8. — *Nialus feculentus* (FAIRMAIRE), palpe maxillaire.
FIG. 9. — *Nialus feculentus* (FAIRMAIRE), palpe labial.
FIG. 10, 11. — *Nialus tetricus* (HAROLD), genitalia.
FIG. 12, 13. — *Nialus feculentus* (FAIRMAIRE), genitalia.
-



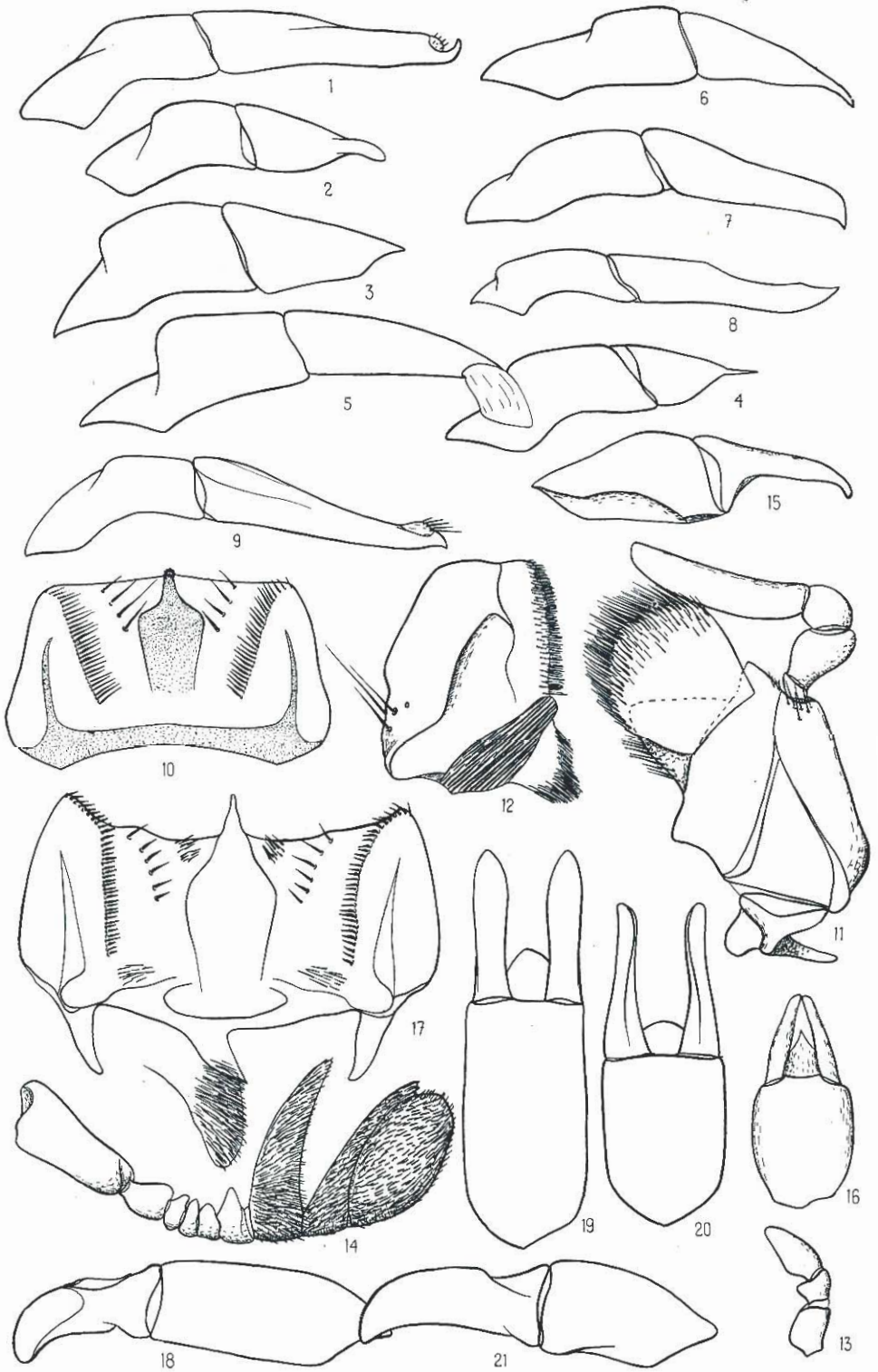
EXPLICATIONS DE LA PLANCHE XX.

- FIG. 1, 2. — *Nialus nigrita* (FABRICIUS), genitalia.
FIG. 3, 4. — *Nialus calidus* (HAROLD), genitalia.
FIG. 5, 6. — *Nialus angustatus* (KLUG), genitalia.
FIG. 7, 8. — *Nialus venalis* (SCHMIDT), genitalia.
FIG. 9, 10. — *Nialus consimilis* (BOHEMAN), genitalia.
FIG. 11. — *Macroretrus singularis* PÉRINGUEY ♀, éperon terminal des tibias antérieurs.
FIG. 12. — *Macroretrus singularis* PÉRINGUEY ♂, éperon terminal des tibias antérieurs.
FIG. 13. — *Macroretrus singularis* PÉRINGUEY, genitalia (de profil).
FIG. 14. — *Macroretrus singularis* PÉRINGUEY, apex d'un paramère (face dorsale).
FIG. 15. — *Macroretrus singularis* PÉRINGUEY ♂, griffes médianes.
FIG. 16. — *Aphodiopsis latipes* n. sp., tibia postérieur.
FIG. 17. — *Aphodiopsis latipes* n. sp., tibia antérieur.
-



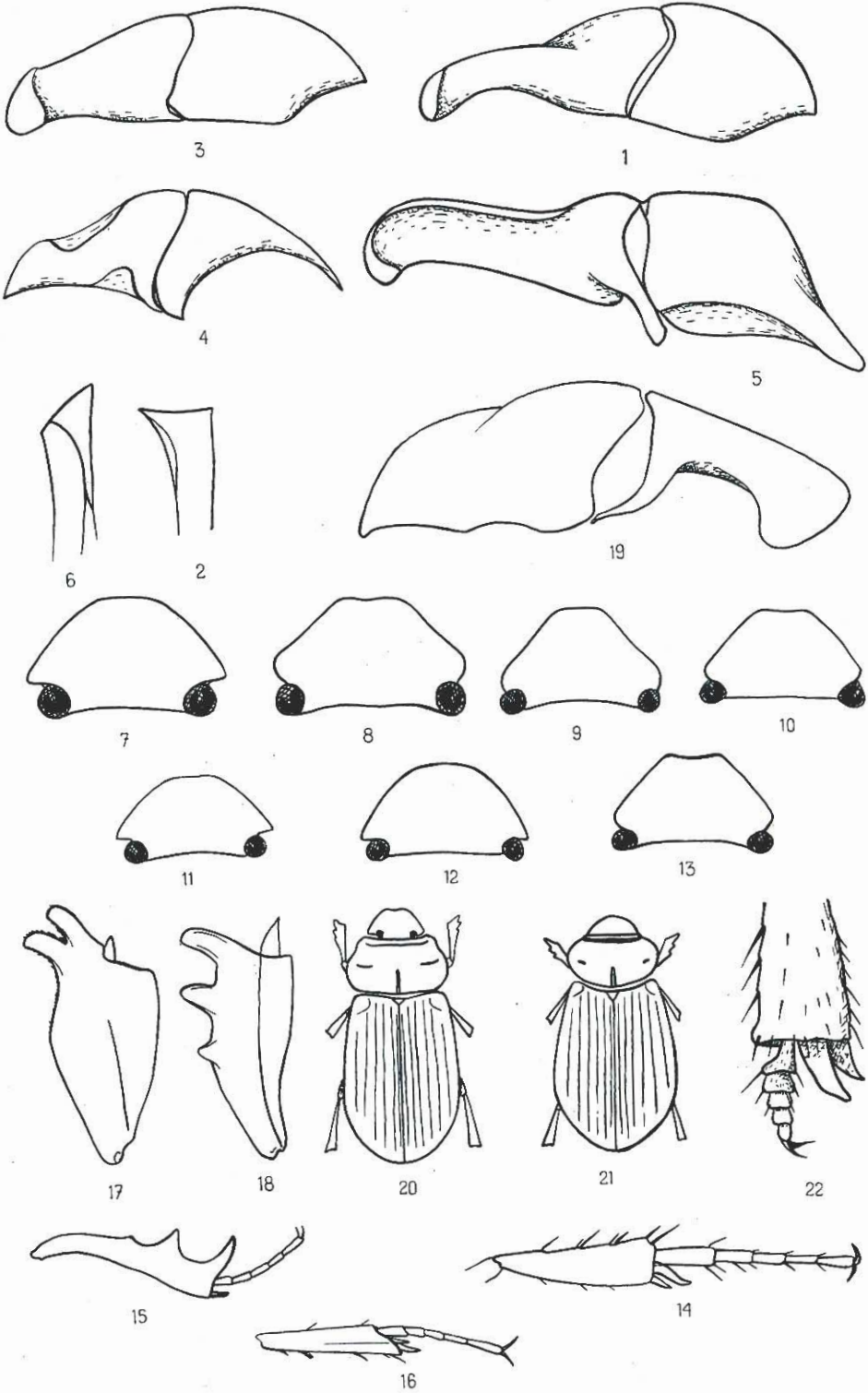
EXPLICATIONS DE LA PLANCHE XXI.

- FIG. 1. — *Lorditomaeus Ellenbergeri* n. sp., genitalia.
FIG. 2. — *Lorditomaeus fornicatus* SCHMIDT, genitalia.
FIG. 3. — *Lorditomaeus setulosus* SCHMIDT, genitalia.
FIG. 4. — *Lorditomaeus tenuis* SCHMIDT, genitalia.
FIG. 5. — *Lorditomaeus infuscatus* SCHMIDT, genitalia.
FIG. 6. — *Lorditomaeus lunatulus* SCHMIDT, genitalia.
FIG. 7. — *Lorditomaeus invenustus* SCHMIDT, genitalia.
FIG. 8. — *Lorditomaeus opatroides* subsp. *Collarti* BOUCOMONT, genitalia.
FIG. 9. — *Lorditomaeus proditor* (GESTRO), genitalia.
FIG. 10. — *Ataenius monticola* PAULIAN, épipharynx.
FIG. 11. — *Ataenius monticola* PAULIAN, maxille.
FIG. 12. — *Ataenius monticola* PAULIAN, mandibule.
FIG. 13. — *Ataenius monticola* PAULIAN, palpe labial.
FIG. 14. — *Ataenius monticola* PAULIAN, antenne.
FIG. 15, 16. — *Ataenius monticola* PAULIAN, genitalia.
FIG. 17. — *Saprosites consonus* SCHMIDT, épipharynx.
FIG. 18, 19. — *Saprosites consonus* SCHMIDT, genitalia.
FIG. 20, 21. — *Saprosites camerounensis* PAULIAN, genitalia.
-



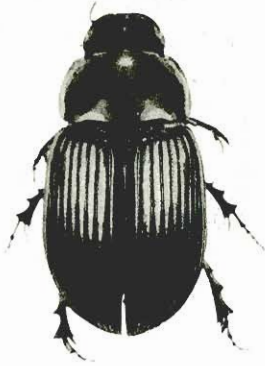
EXPLICATIONS DE LA PLANCHE XXII.

- FIG. 1. — *Ataenius granocostatus* SCHMIDT, genitalia (profil).
FIG. 2. — *Ataenius granocostatus* SCHMIDT, apex d'un paramère (face dorsale).
FIG. 3. — *Ataenius coriarius* SCHMIDT, genitalia.
FIG. 4. — *Ataenius gracilis* (MELSHEIMER), genitalia.
FIG. 5. — *Ataenius insolitus* SCHMIDT, genitalia (profil).
FIG. 6. — *Ataenius insolitus* SCHMIDT, apex d'un paramère (face dorsale).
FIG. 7. — *Didactylia varia* SCHMIDT, tête.
FIG. 8. — *Didactylia turbida* (ERICHSON), tête.
FIG. 9. — *Didactylia cicatricosa* SCHMIDT, tête.
FIG. 10. — *Didactylia Buxtoni* PAULIAN, tête.
FIG. 11. — *Didactylia Clementi* PEYERIMHOF, tête.
FIG. 12. — *Didactylia pallicolor* FAIRMAIRE, tête.
FIG. 13. — *Didactylia Murati* PAULIAN, tête.
FIG. 14. — *Didactylia varia* SCHMIDT, tibia et tarse postérieurs.
FIG. 15. — *Didactylia varia* SCHMIDT, tibia et tarse antérieurs, ♂.
FIG. 16. — *Didactylia Clementi* PEYERIMHOF, tibia et tarse postérieurs.
FIG. 17. — *Sybaæ distorsus* SCHMIDT, tibia antérieur.
FIG. 18. — *Sybaæ impressicollis* BOHEMAN, tibia antérieur.
FIG. 19. — *Psammobius laevis* n. sp., genitalia.
FIG. 20. — *Psammobius subciliatus* HAROLD.
FIG. 21. — *Psammobius laevis* n. sp.
FIG. 22. — *Psammobius laevis* n. sp., apex du tibia et tarse postérieur.
-



EXPLICATIONS DE LA PLANCHE XXIII.

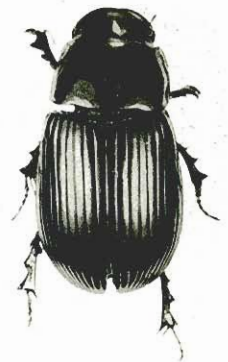
- FIG. 1. — *Adeloparius Overlaeti* (BOUCOMONT)
FIG. 2. — *Colobopterus principalis* (HAROLD).
FIG. 3. — *Adeloparius circumdatus* (KLUG).
FIG. 4. — *Adeloparius Wittei* n. sp.
FIG. 5. — *Adeloparius pulcherrimus* (REICHE).
FIG. 6. — *Adeloparius Wahlbergi* (BOHEMAN)
FIG. 7. — *Alocoderus Gilleti* SCHMIDT.
FIG. 8. — *Hemicyclium unicornutum* SCHMIDT.
FIG. 9. — *Colobopterus senegalensis* (KLUG).
FIG. 10. — *Craterocyphus illustris* (SCHMIDT).
FIG. 11. — *Cataphodius moestus* (FABRICIUS).
FIG. 12. — *Trichaphodioides calcaratus* (BOHEMAN).
FIG. 13. — *Loraphodius motoi* PAULIAN.
FIG. 14. — *Sybar impressicollis* BOHEMAN.
FIG. 15. — *Rhysemus congolanus* CLOUET.
FIG. 16. — *Rhyparus comorianus* FAIRMAIRE.
-



1. *Adeloparius Overlaeti*
(BOUCOMONT).



2. *Colobopterus principalis*
(HAROLD).



3. *Adeloparius circumdatus*
(KLUG).



4. *Adeloparius Wittei*
n. sp.



5. *Adeloparius pulcherrimus*
(REICHE).



6. *Adeloparius Wahlbergi*
(BOHEMAN).



7. *Allocoderus Gilleti*
(SCHMIDT).



8. *Hemicyclium unicornutum*
(SCHMIDT)



9. *Colobopterus senegalensis*
(KLUG).



10. *Craterocyphus illustris*
(SCHMIDT).



11. *Calaphodius moestus*
(FABRICIUS).



12. *Trichaphodioides calcaratus*
(BOHEMAN).



13. *Loraphodius motoi* PAULIAN.



14. *Sybax impressicollis*
(BOHEMAN).



15. *Rhyssemus congolanus*
(CLOUET).



16. *Rhyparus comorianus*
FAIRMAIRE.