

PLATE I

## EXPLANATION OF PLATE I.

---

FIG. 1. — General view of the Nyiragongo massif and the surrounding lava plains, taken from S.E. To the left of the central cone, the Shaheru is partly hidden by clouds; on the right, the Baruta. The northern slope of Nyamuragira appears behind the Baruta. The dark country in the foreground is covered by flows from the Karisimbi and its satellites. The leucite flows form the plain at the foot of the Nyiragongo and cover the sunlit patch to the left.

(Photo: R. BOURGEOIS. 12.614/504 — C.I.D.)

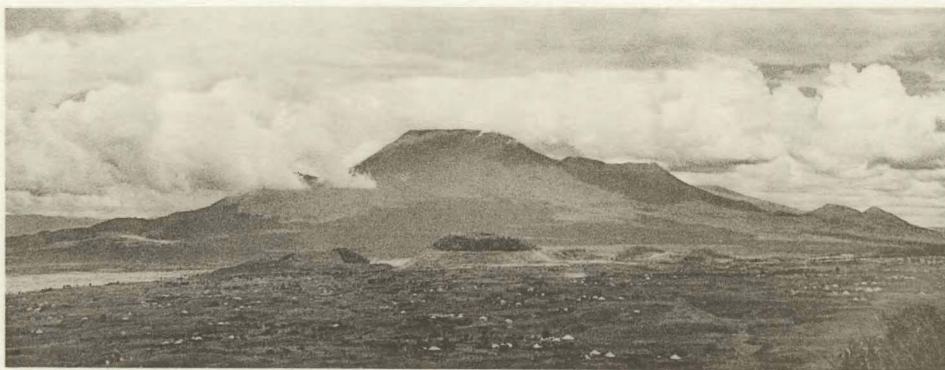
FIG. 2. — The Nyiragongo seen from the south. In the left background, the Nyamuragira with the steam of the Shabubembe eruption. Photograph taken in November 1951.

(Photo: C. LAMOTE. 12.614/225 — C.I.D.)

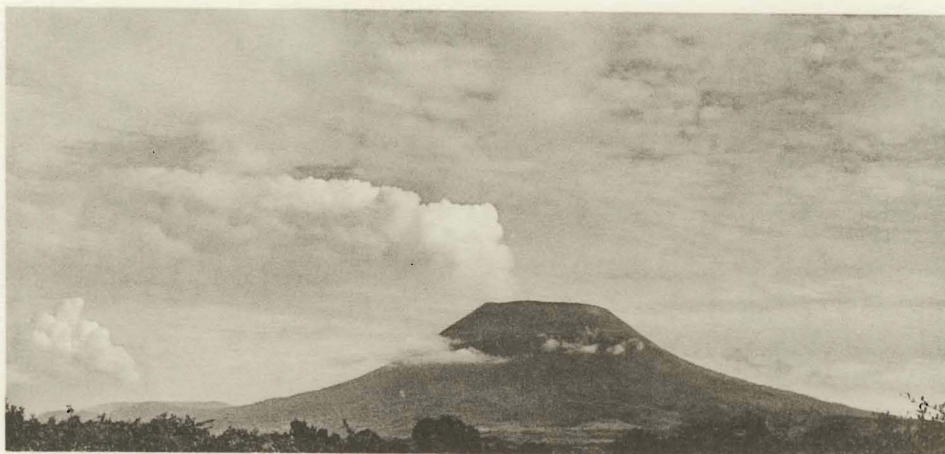
FIG. 3. — The crater of the Nyiragongo in July 1918. The two pits visible during the period 1894-1911 have formed one single sink the outline of which has undergone no major changes since.

(Photo: X. DIERCKX.)

---



1. General view of the Nyiragongo massif.



2. The Nyiragongo seen from the south.



3. The crater of the Nyiragongo.

PLATE II

## EXPLANATION OF PLATE II.

---

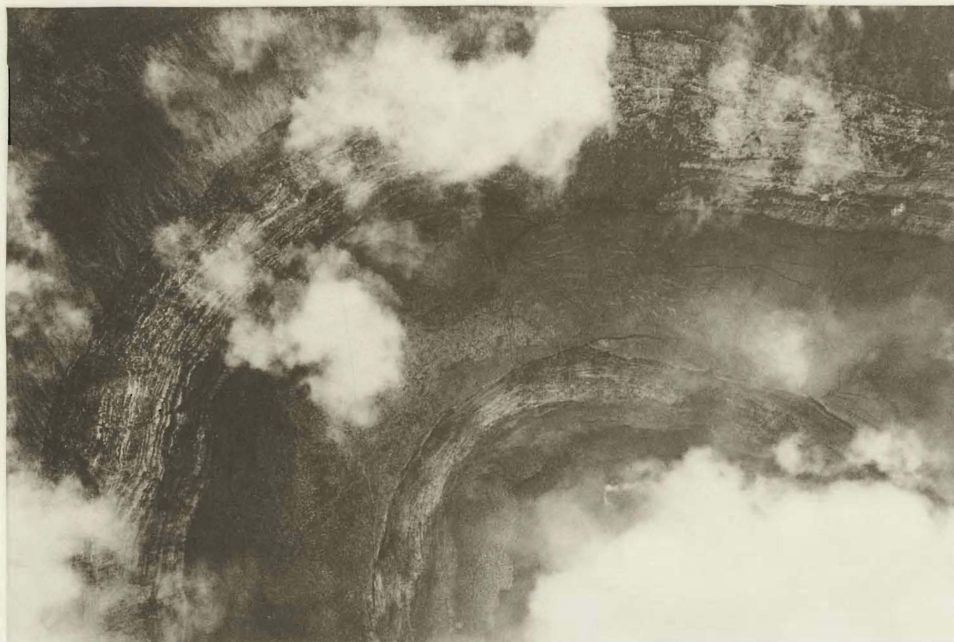
FIG. 1. — Aerial photograph of the N.E. part of the Nyiragongo crater. Interrupted flow channels can be identified on the outer slope. Splashes of glassy lava on the inner wall, to the right of the upper cloud. Steam hides the lava lake.

(Photo: INSTITUT GÉOGRAPHIQUE DU CONGO BELGE.)

FIG. 2. — The inner wall with the talus on the S.S.E. side. The wall is about 160 m. high. Darker tuff layers alternate with lighter colored lava flows.

(Photo: E. SCHULTHESS-CONZETT & HUBER — « DU ».)

---



1. Aerial photograph of the N.E. part of the Nyiragongo crater.



2. Part of the inner wall of the Nyiragongo crater.

PLATE III

## EXPLANATION OF PLATE III.

---

FIG. 1. — General view of the inner part, taken from the edge of the upper platform towards W.N.W. and showing the crater rim and inner wall with the contact between the tuffs and the overlying lava flows, the regular horizontal flows in the walls of the sink, the lower platform with a talus of fallen blocks, the lava lake and part of the crag.

(Photo: E. SCHULTHESS-CONZETT & HUBER — « DU ».)

FIG. 2. — Some of the leucitite blocks with giant leucites found on the upper platform.

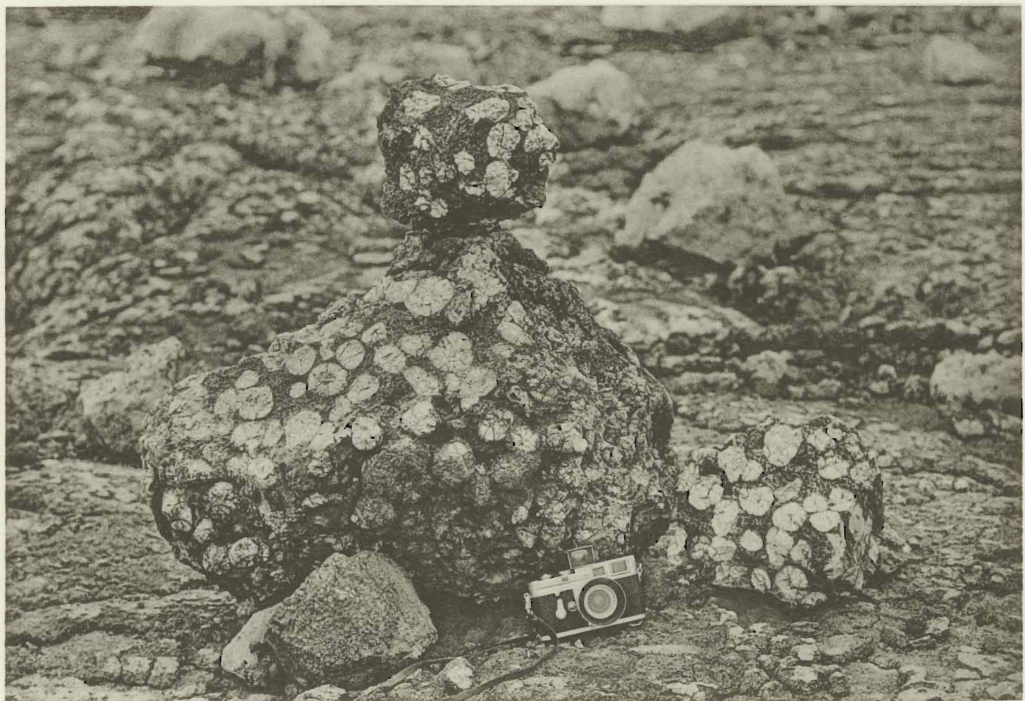
(Photo: E. SCHULTHESS-CONZETT & HUBER — « DU ».)

---





1. Nyiragongo. General view of the inner part of the crater.



2. Leucite blocks with giant leucites.

---

Sorti de presse le 31 mai 1958.

---